

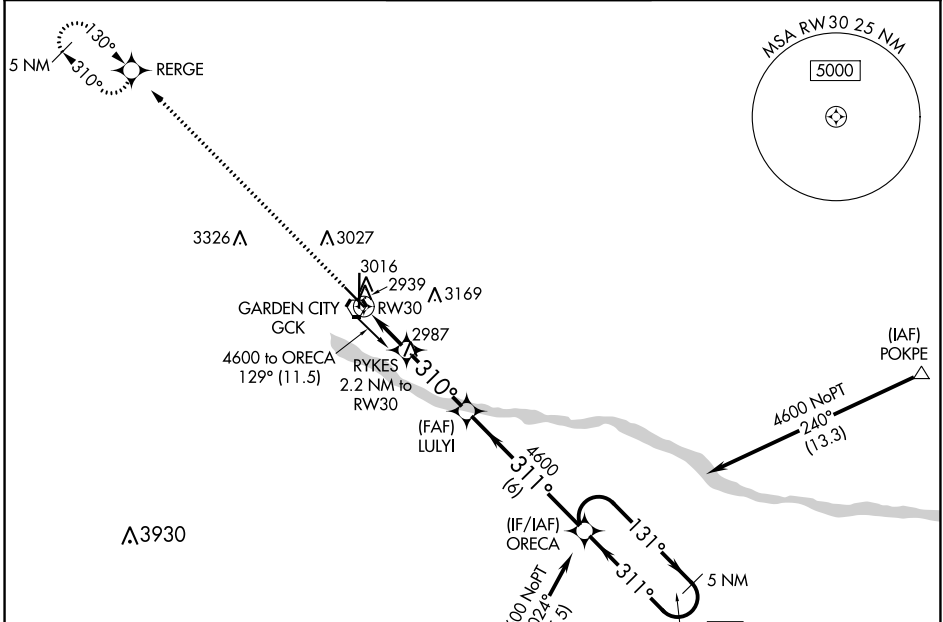
WAAS CH <b>86703</b> <b>W30A</b>	APP CRS <b>310°</b>	Rwy ldg <b>5700</b>
		TDZE <b>2885</b>
		Apt Elev <b>2891</b>

# RNAV (GPS) RWY 30

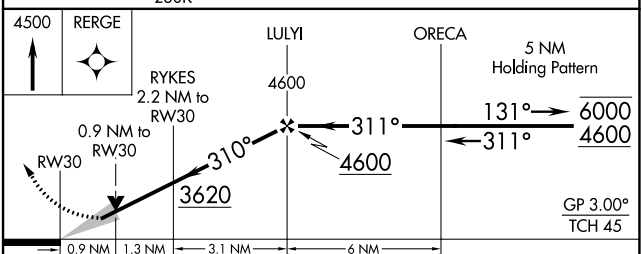
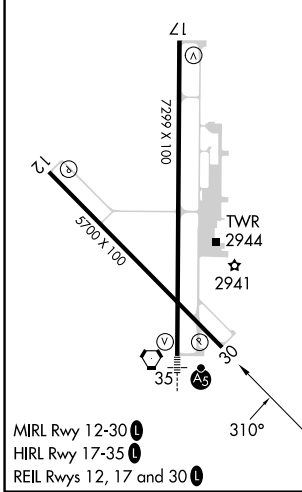
GARDEN CITY RGNL (GCK)

RNP APCH-GPS.	MISSED APPROACH: Climb to 4500 direct RERGE and hold.
<p>▼ For uncompensated Baro-VNAV systems, LNAV/VNAV NA below -20°C or above 54°C.</p> <p>▲</p>	

ASOS <b>121.325</b>	KANSAS CITY CENTER <b>125.2 269.4</b>	GARDEN CITY TOWER ★ <b>118.15 (CTAF) 0 254.4</b>	GND CON <b>119.0 254.4</b>	UNICOM <b>122.95</b>
------------------------	--	---	-------------------------------	-------------------------



ELEV 2891	<b>D</b>	TDZE 2885
-----------	----------	-----------



CATEGORY	A	B	C	D
LPV DA		3135-1	250 (300-1)	
LNAV/VNAV DA		3137-1	252 (300-1)	
LNAV MDA		3200-1	315 (400-1)	
<b>C</b> CIRCLING	3320-1 429 (500-1)	3360-1 469 (500-1)	3480-1½ 589 (600-1½)	3480-2 589 (600-2)

NC-2, 23 MAR 2023 to 20 APR 2023

NC-2, 23 MAR 2023 to 20 APR 2023