

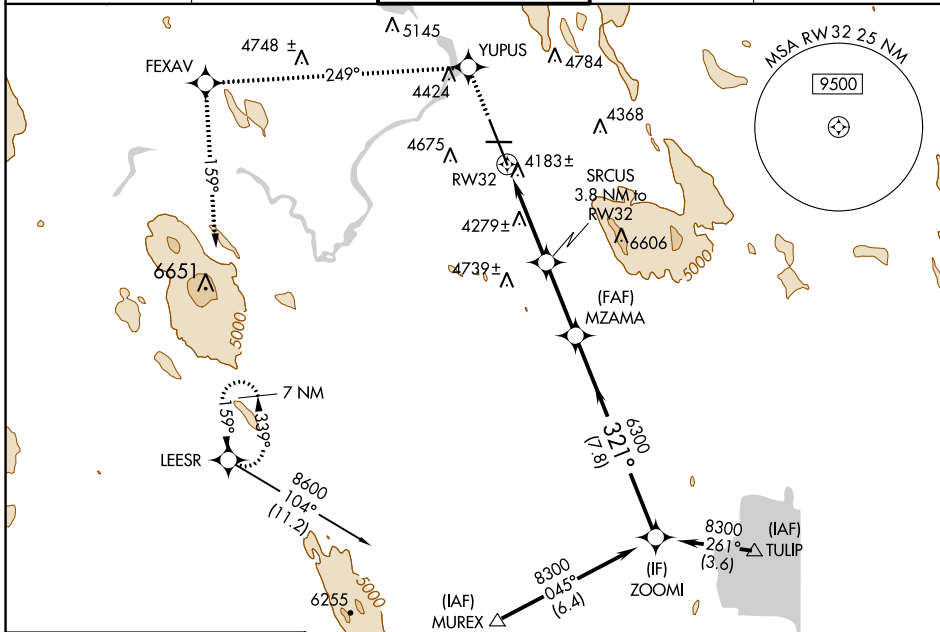
WAAS CH 70702 W32A	APP CRS 321°	Rwy Idg 10302 TDZE 4095 Apt Elev 4095
--	------------------------	--

RNAV (GPS) RWY 32

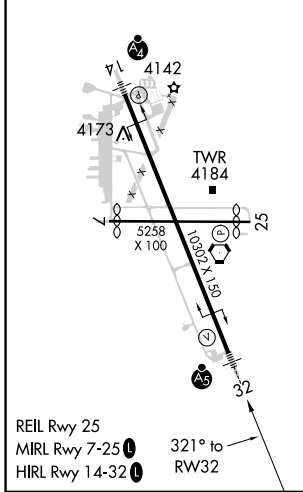
CRATER LAKE/KLAMATH RGNL (L.M.T)

RNP APCH.	MALSR	MISSED APPROACH: Climb to 8600 direct YUPUS and via track 249° to FEXAV and via track 159° to LEESR and hold.
<p>▼ For uncompensated Baro-VNAV systems, LNAV/VNAV NA below -23°C or above 41°C. For inop ALS, increase LPV all Cats visibility to RVR 5000. Circling NA for Cat D east of Rwy 14-32.</p>		

ATIS 126.5 263.0	KINGSLEY APP CON 123.675 270.8	KINGSLEY TOWER* 133.975 (CTAF) 0 257.8	GND CON 121.9 348.6	UNICOM 122.95
----------------------------	--	--	-------------------------------	-------------------------



ELEV 4095	D	TDZE 4095
-----------	----------	-----------



KLAMATH FALLS, OREGON
Orig-B 21MAY20

8600	YUPUS	↑	FEXAV	↑	LEESR	Procedure Turn NA	
	↑	↑	↑	↑	↑		
	↑	↑	↑	↑	↑		
* LNAV only.						Procedure Turn NA	
<p>SRCUS 3.8 NM to RW32</p> <p>* 1.8 NM to RW32</p> <p>MZAMA</p> <p>8300</p> <p>6300</p> <p>5360*</p> <p>321°</p> <p>GP 3.00° TCH 55</p>							
<p>1.8 NM 2 NM 2.8 NM 7.8 NM</p>							
CATEGORY	A	B	C	D			
LPV DA	4387/24					292 (300-½)	
LNAV/VNAV DA	4674-1½					579 (600-1½)	
LNAV MDA	4720/24	625 (700-½)	4720/60 625 (700-1¼)	4720-1½ 625 (700-1½)			
C CIRCLING	4840-1 745 (800-1)	4980-1¼ 885 (900-1¼)	5420-3 1325 (1400-3)	5660-3 1565 (1600-3)			

42°09'N-121°44'W

CRATER LAKE/KLAMATH RGNL (L.M.T)

RNAV (GPS) RWY 32

NW-1, 23 MAR 2023 to 20 APR 2023

NW-1, 23 MAR 2023 to 20 APR 2023