


LOC I-LMT	APP CRS	Rwy Idg
<b>109.5</b>	<b>321°</b>	<b>10302</b>
		TDZE
		<b>4095</b>
		Apt Elev
		<b>4095</b>

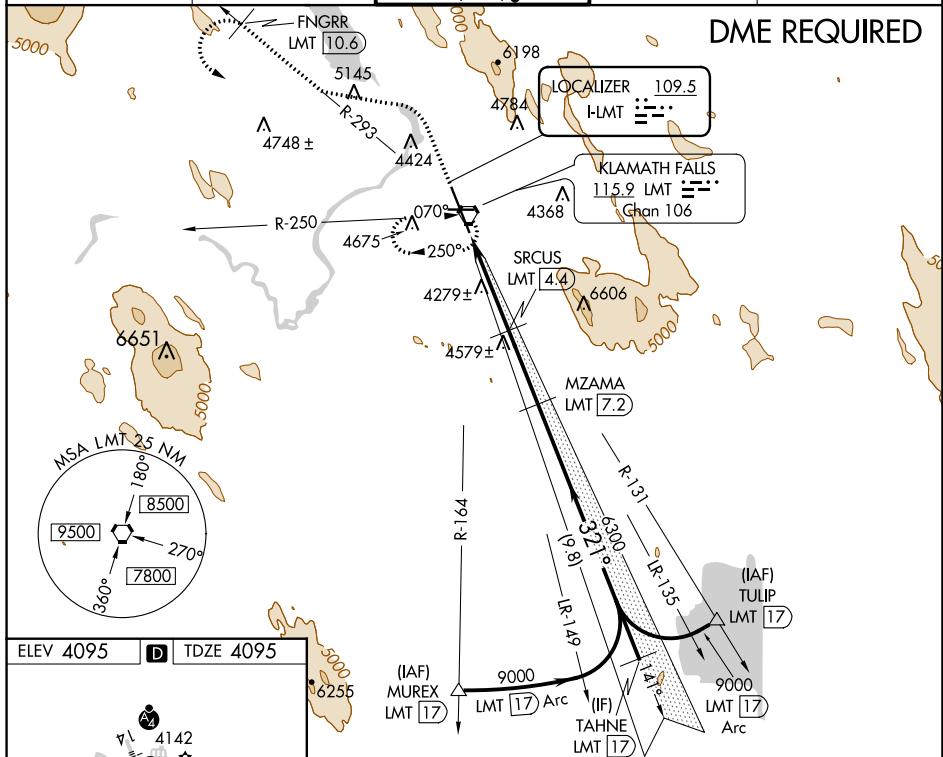
# ILS or LOC/DME RWY 32

CRATER LAKE/KLAMATH RGNL (LMT)

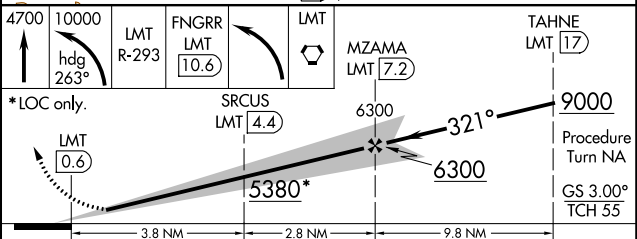
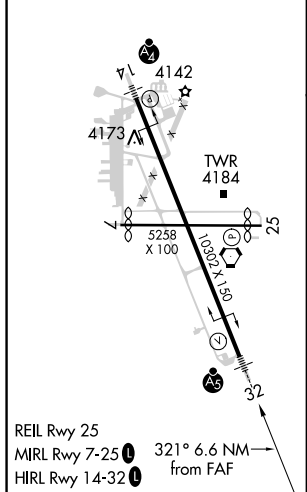
**⚠** DME from LMT VORTAC. Simultaneous reception of I-LMT and LMT DME required. Circling NA for Cat D east of Rwy 14-32.  
**##** Missed approach requires minimum climb gradient of 217' per NM to 5600.  
**\*\*** RVR 1800 authorized with use of FD or AP or HUD to DA.

**MALSR**  
 MISSED APPROACH: Climb to 4700 then climbing left turn to 10000 via heading 263° and LMT VORTAC R-293 to FNGRR/LMT VORTAC 10.6 DME then left turn direct LMT VORTAC and hold.

ATIS	KINGSLEY APP CON	KINGSLEY TOWER*	GND CON	UNICOM
<b>126.5 263.0</b>	<b>123.675 270.8</b>	<b>133.975 257.8</b>	<b>121.9 348.6</b>	<b>122.95</b>



ELEV 4095	<b>D</b>	TDZE 4095
-----------	----------	-----------



CATEGORY	A	B	C	D
S-ILS 32 ##	** 4295/24 200 (200-1/2)			
S-ILS 32	4316/24 221 (300-1/2)			
S-LOC 32	4620/24	525 (600-1/2)	4620/50 525 (600-1)	4620/60 525 (600-1 1/4)
<b>C</b> CIRCLING	4840-1 745 (800-1)	4980-1 1/4 885 (900-1 1/4)	5420-3 1325 (1400-3)	5660-3 1565 (1600-3)

NW-1, 23 MAR 2023 to 20 APR 2023

NW-1, 23 MAR 2023 to 20 APR 2023