

VOR/DME RWY 30

EL CENTRO NAF (VRACIU FLD) (KNJK)

AL-472 [USN]

VORTAC IPL 115.9 Chan 106	APCH CRS 284°	Rwy Idg TDZE Arprt Elev 6825 -42 -42
---	-------------------------	--

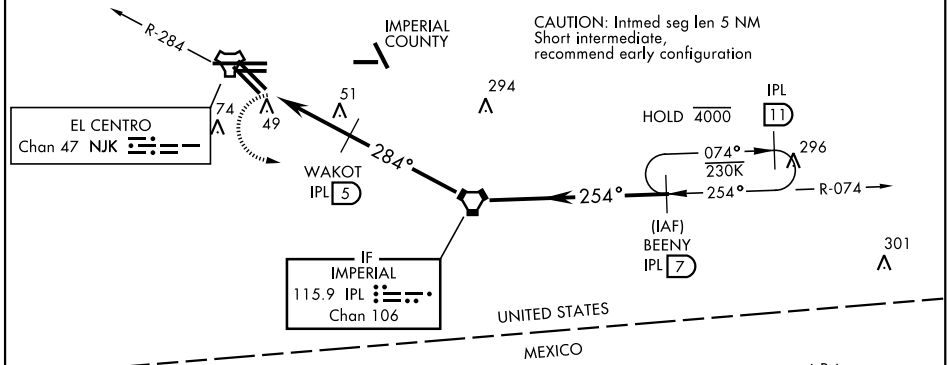
▼ Visibility reduction by helicopters NA. MISSED APPROACH: Climb to 600, then climbing left turn to 2000, intercept IPL VORTAC R-074 to BEENY and hold.

ATIS ★ 269.275	LOS ANGELES CENTER 128.6 291.7	TOWER ★ 119.1 360.2	GND CON 121.9 254.35	CLNC DEL 340.2
--------------------------	--	-------------------------------	--------------------------------	--------------------------

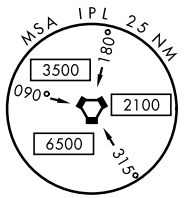
RWY 30: 20:1 visual area penetrated by
Fence, lit, 289 ft from thld, 213 ft right of course, 8 AGL/-34 MSL
Fence, 199 ft from thld, 305 ft right of course, 8 AGL/-34 MSL,
Fence, 504 ft from thld, 3 ft right of course, 8 AGL/-34 MSL,

CAUTION: Extensive civil aircraft operations at Imperial County airport.

CAUTION: Intmed seg len 5 NM
Short intermediate, recommend early configuration

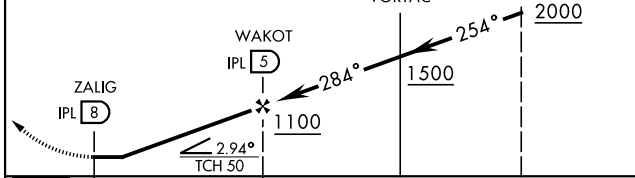


CAUTION: Do not overfly the US-Mexican border.



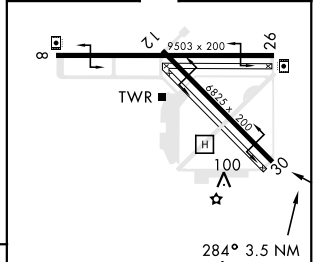
EMERG SAFE ALT 100 NM 17,100 from NJK TACAN

600	2000	IPL R-074	BEENY IPL (7)
-----	------	-----------	---------------



CATEGORY	A	B	C	D
S-30	340-1 382 (400-1)	340-1½ 382 (400-1½)	420-1½ 562 (600-2)	520-2 (600-2)
CIRCLING	420-1 462 (500-1)	462 (500-1½)	520-2 (600-2)	

ELEV -42	TDZE -42
----------	----------



HIRL Rwy 8-26, 12-30

FAF to MAP 3.0 NM					
Knots	60	90	120	150	180
Min:Sec	3:00	2:00	1:30	1:12	1:00

VOR/DME RWY 30

SW-3, 23 MAR 2023 to 20 APR 2023

SW-3, 23 MAR 2023 to 20 APR 2023