


RNAV (RNP) Y RWY 27

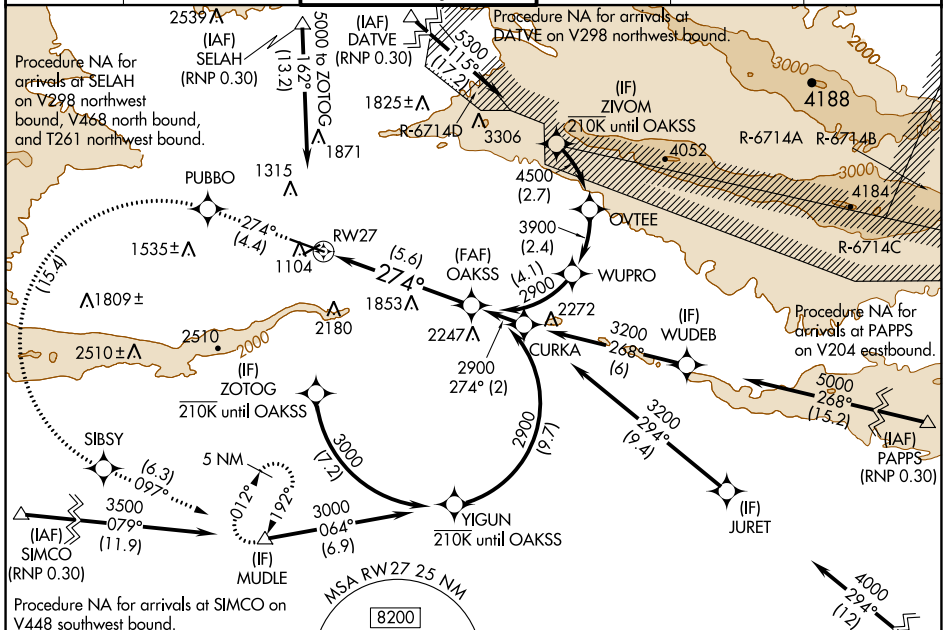
YAKIMA AIR TRML/MCALLISTER FLD (YKM)

APP CRS	Rwy Idg	7604
274°	TDZE	1068
	Apt Elev	1099

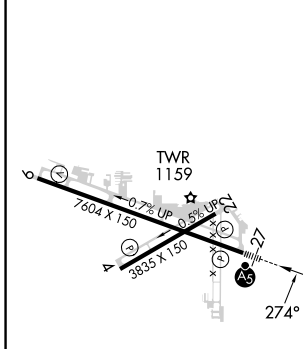
RNP APCH - GPS. From MUdle or OVTEE or YIGUN: RF.
 ▼ For uncompensated Baro-VNAV systems, procedure NA below -15°C or above 54°C. DATVE transition NA when R-6714 A, C, D active. For inop ALS, increase RNP 0.30* all Cats visibility to RVR 5500 and RNP 0.30 all Cats to 2½ SM.


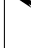
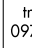
MALSRS  MISSED APPROACH: Climb to 5100 on track 274° to PUBBO left turn to SIBSY and on track 097° to MUdle and hold.
 *Missed approach requires minimum climb of 425 feet per NM to 3400.

ATIS	CHINOOK APP CON*	YAKIMA TOWER*	GND CON	CLNC DEL	UNICOM
125.25	123.8 263.15	133.25 (CTAF) 0 257.8	121.9	121.9	122.95




ELEV 1099	D	TDZE 1068
-----------	----------	-----------



5100	PUBBO	SIBSY	MUdle	OAKSS
tr 274°			tr 097°	
See planview for multiple IF locations.				
				2900
				2900
				GP 3.00°
				TCH 57

CATEGORY	A	B	C	D
RNP 0.30 DA*		1418/30	350 (400-5%)	
RNP 0.30 DA		1845-1¾	777 (800-1¾)	

AUTHORIZATION REQUIRED

MIRL Rwy 4-22
 HIRL Rwy 9-27 
 REIL Rwy 4, 9, and 22

YAKIMA, WASHINGTON
 Orig-D 23FEB23

YAKIMA AIR TRML/MCALLISTER FLD (YKM)
 46°34'N-120°33'W **RNAV (RNP) Y RWY 27**

NW-1, 23 MAR 2023 to 20 APR 2023

NW-1, 23 MAR 2023 to 20 APR 2023