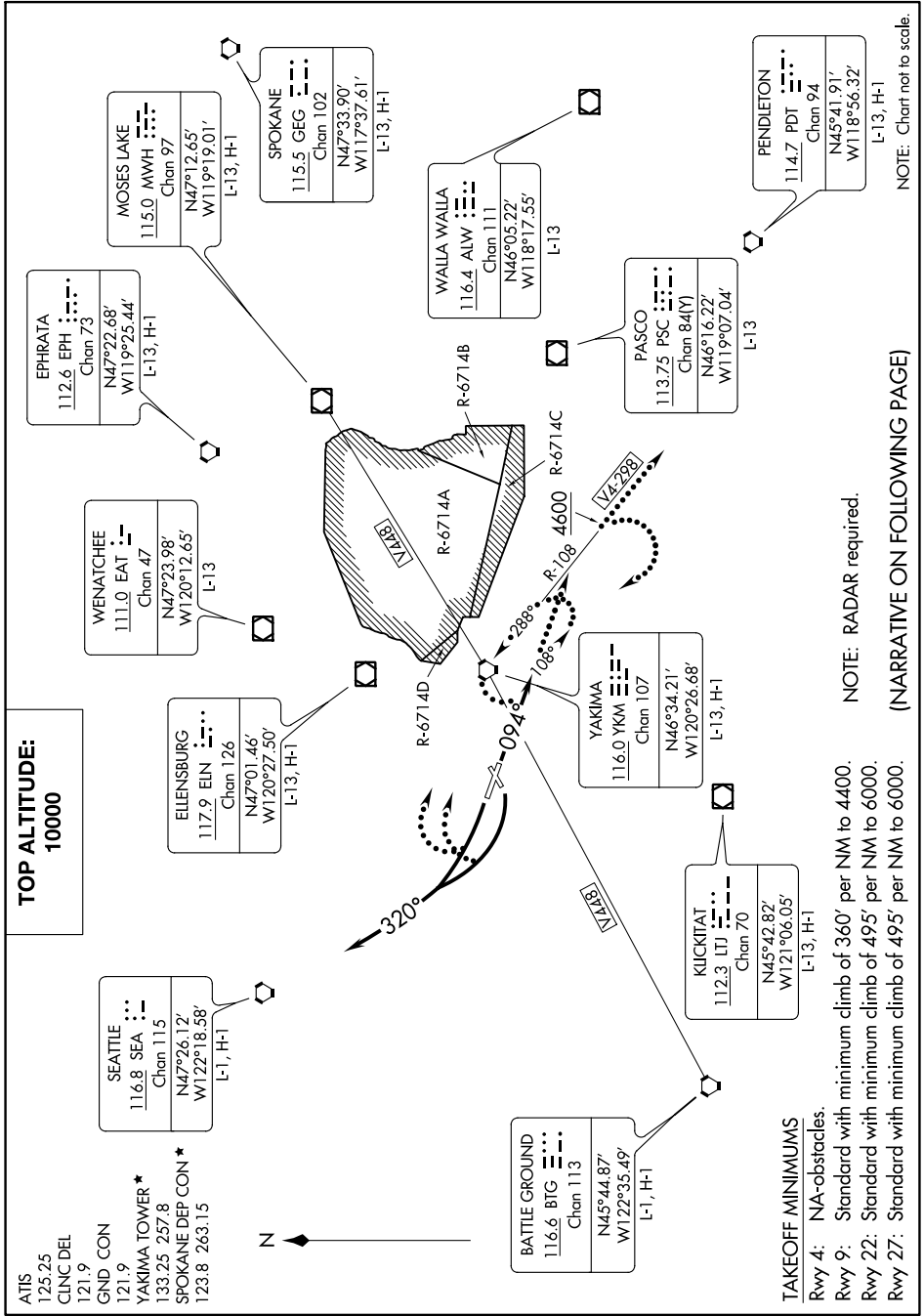


NACHES FOUR DEPARTURE

YAKIMA AIR TRML/MCALLISTER FLD (YKM)
AL-465 (FAA) YAKIMA, WASHINGTON

NW-1, 23 MAR 2023 to 20 APR 2023



NACHES FOUR DEPARTURE

10NOV16

YAKIMA, WASHINGTON
YAKIMA AIR TRML/MCALLISTER FLD (YKM)

NW-1, 23 MAR 2023 to 20 APR 2023

NOTE: Chart not to scale.

(NARRATIVE ON FOLLOWING PAGE)

TAKEOFF MINIMUMS
 Rwy 4: NA-obstacles.
 Rwy 9: Standard with minimum climb of 360' per NM to 4400.
 Rwy 22: Standard with minimum climb of 495' per NM to 6000.
 Rwy 27: Standard with minimum climb of 495' per NM to 6000.