

APP CRS	Rwy Idg	6069
152°	TDZE	968
	Apt Elev	969

RNAV (GPS) RWY 15

SMITH REYNOLDS (INT)

RNP APCH.

When local altimeter setting not received, use Piedmont Triad Intl altimeter setting and increase all MDA 40 feet and Circling Cats C/D visibility ¼ SM. Circling Rwy 4, 22 NA at night. Rwy 15 helicopter visibility reduction below ¾ SM NA.

MISSED APPROACH:
Climb to 3000 direct COLEB and on track 102° to GSO VORTAC and hold.

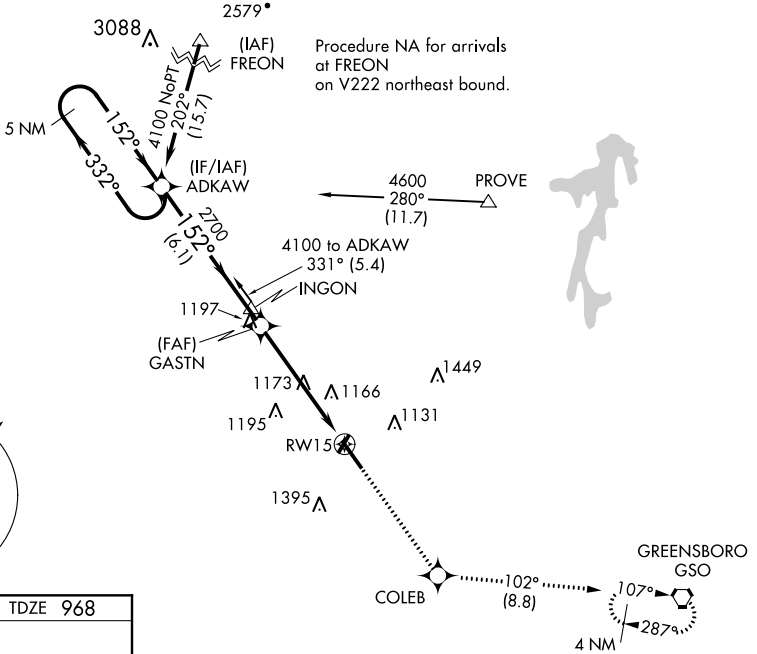
ATIS
121.3

GREENSBORO APP CON
124.35 269.225

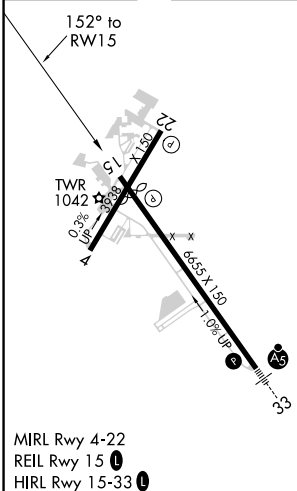
WINSTON-SALEM TOWER ★
123.75 (CTAF) 0 257.8

GND CON
128.25

UNICOM
122.95

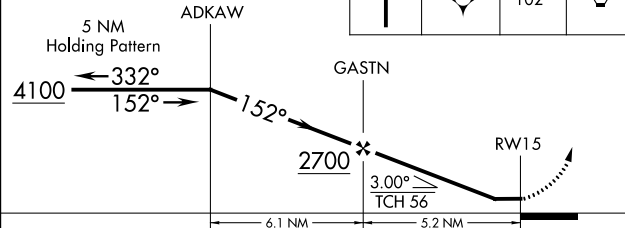


ELEV 969 **D** TDZE 968



VGSI and descent angles not coincident (VGSI Angle 3.00/TCH 38).

3000	COLEB	tr 102°	GSO
------	-------	---------	-----



CATEGORY	A	B	C	D
LNAV MDA	1440-1	472 (500-1)	1440-1½	472 (500-1½)
CIRCLING	1480-1 511 (600-1)	1580-1 611 (700-1)	1700-2 731 (800-2)	1760-2½ 791 (800-2½)