

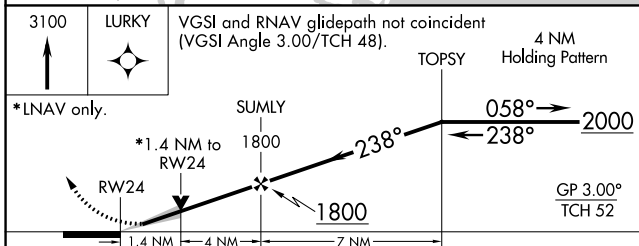
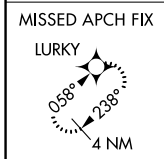
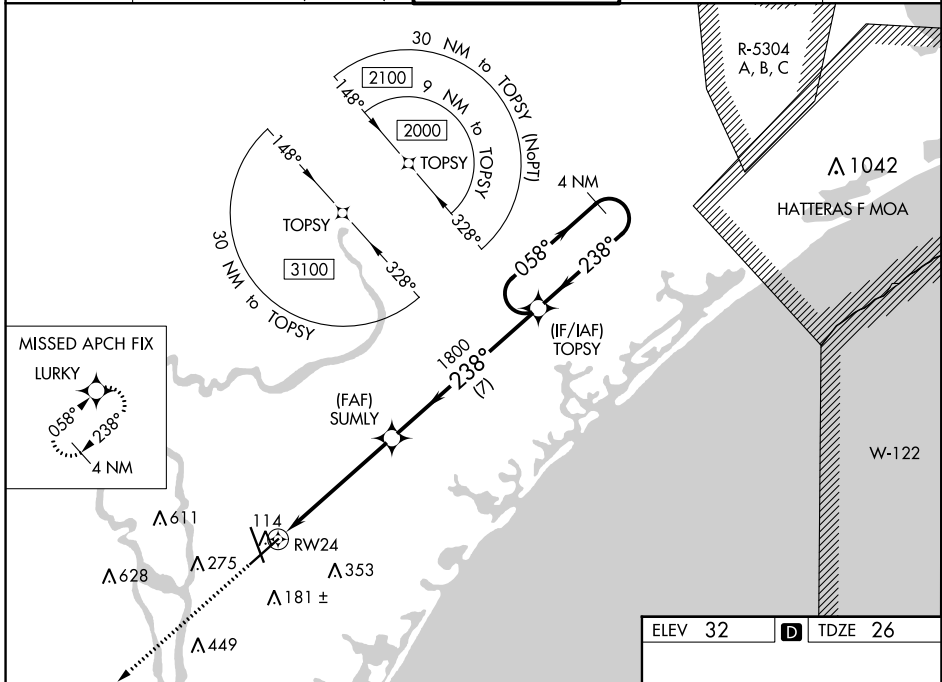
WAAS CH 45899 W24A	APP CRS 238°	Rwy Idg 8016 TDZE 26 Apt Elev 32
--	------------------------	---

RNAV (GPS) RWY 24

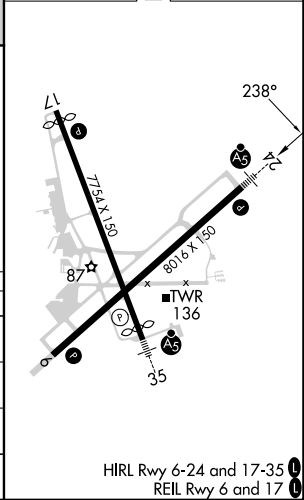
WILMINGTON INTL (ILM)

	For uncompensated Baro-VNAV systems, LNAV/VNAV NA below -7°C (20°F) or above 54°C (130°F). DME/DME RNP-0.3 NA. ** RVR 1800 authorized with use of FD or AP or HUD to DA.	MALSR 	MISSED APPROACH: Climb to 3100 direct LURKY and hold.
--	--	-----------	---

ATIS 124.975	WILMINGTON APP CON * 118.25 284.65 (164°-343°) 135.75 317.425 (344°-163°)	WILMINGTON TOWER * 119.9 (CTAF) 239.3	GND CON 121.9 348.6	UNICOM 122.95
------------------------	---	--	-------------------------------	-------------------------



ELEV 32	D	TDZE 26
---------	---	---------



CATEGORY	A	B	C	D
LPV DA **	226/24		200 (200-½)	
LNAV/VNAV DA	401/40		375 (400-¾)	
LNAV MDA	500/24 474 (500-½)		500/50 474 (500-1)	
CIRCLING	560-1 528 (600-1)		720-2 688 (700-2) 920-3 888 (900-3)	

HIRL Rwy 6-24 and 17-35
REL Rwy 6 and 17

SE-2, 23 MAR 2023 to 20 APR 2023

SE-2, 23 MAR 2023 to 20 APR 2023