


ILS/DME I-PBI 111.9 Chan 56	APP CRS 099°	Rwy Idg 8800 TDZE 16 Apt Elev 20
---	------------------------	---

ILS or LOC RWY 10L

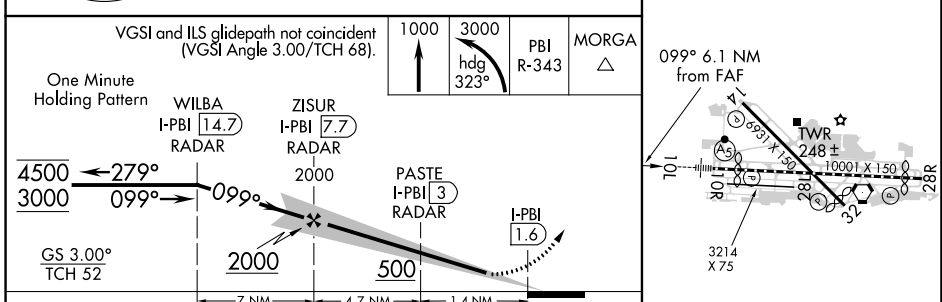
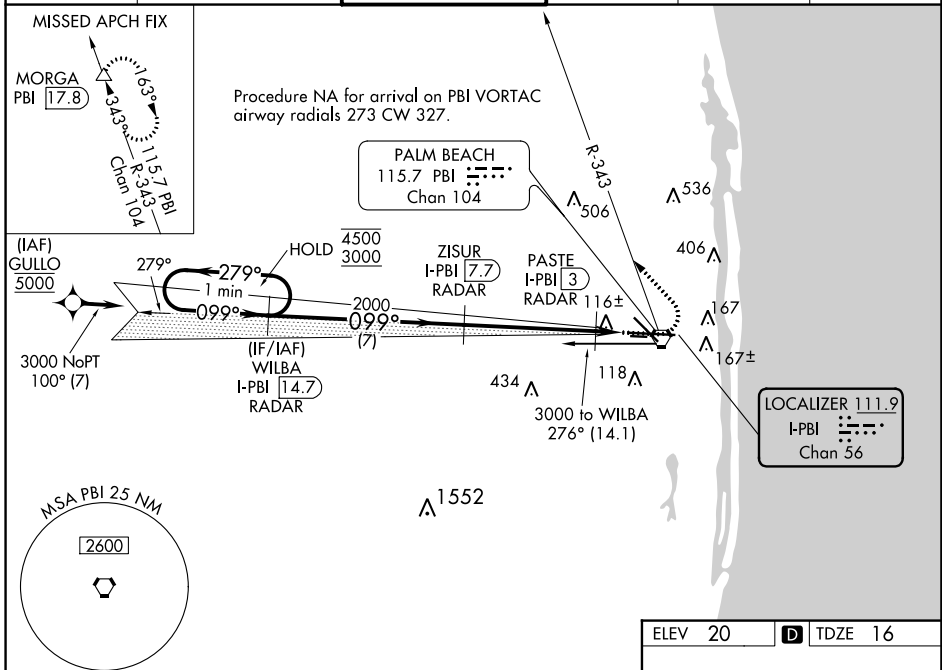
PALM BEACH INTL (PBI)

DME required. RNP APCH-GPS. From GULLO.

MALS  MISSED APPROACH: Climb to 1000 then climbing left turn to 3000 on heading 323° and PBI VORTAC R-343 to MORGA/PBI 17.8 DME and hold.

⚠ For inop ALS, increase S-LOC 10L Cat C/D visibility to RVR 5500.
* RVR 1800 authorized with use of FD or AP or HUD to DA.

D-ATIS 123.75	PALM BEACH APP CON 128.3 317.4	PALM BEACH TOWER 119.1 257.8	GND CON 121.9 284.6	CLNC DEL 121.6 284.6	CPDLC
-------------------------	--	--	-------------------------------	--------------------------------	-------



CATEGORY	A	B	C	D
S-ILS 10L *	216/24 200 (200-1/2)			
S-LOC 10L	380/24 364 (400-1/2)	380/35 364 (400-5/8)		
C CIRCLING	560-1 540 (600-1)	740-2 720 (800-2)		780-2 1/2 760 (800-2 1/2)

ELEV 20 **D** TDZE 16

HIRL Rwy 10L-28R
REIL Rwy 10R, 14, 28L, 28R and 32
MIRL Rwy 14-32 and 10R-28L

SE-3, 23 MAR 2023 to 20 APR 2023

SE-3, 23 MAR 2023 to 20 APR 2023