

WAAS CH 45825 W36A	APP CRS 359°	Rwy Idg TDZE Apt Elev	5001 274 279
----------------------------------------	------------------------	-----------------------------	-----------------------------------------

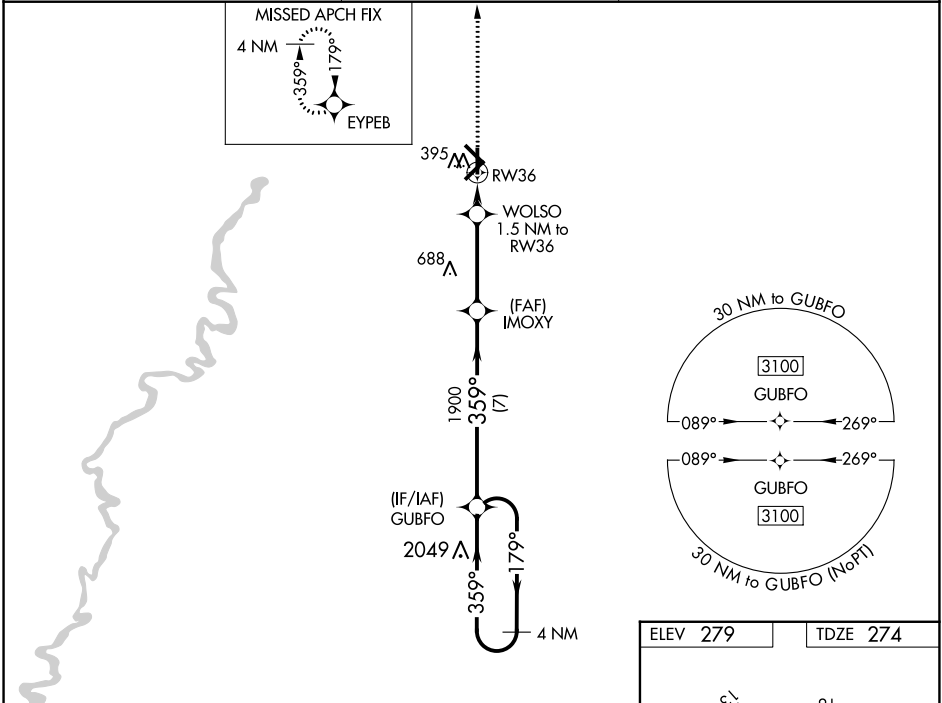
RNAV (GPS) RWY 36

WALNUT RIDGE RGNL (ARG)

⚠ Baro-VNAV NA when using Jonesboro altimeter setting. For uncompensated Baro-VNAV systems, LNAV/VNAV NA below -15°C (5°F) or above 42°C (107°F). DME/DME RNP-0.3 NA. When local altimeter setting not received, use Jonesboro altimeter setting and increase LPV DA to 528 feet, LNAV/VNAV DA to 628 feet, and all MDAs 60 feet; increase LNAV Cats C/D and Circling Cat D visibility ¼ SM.

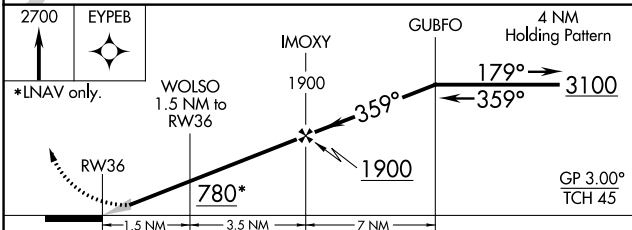
MISSED APPROACH:
Climb to 2700 direct EYPEB and hold.

AWOS-3PT 126.525	MEMPHIS CENTER 120.075 289.4	UNICOM 122.8 (CTAF) 0
----------------------------	----------------------------------------	---------------------------------

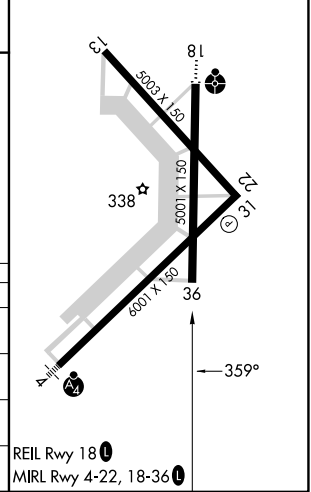


SC-1, 23 MAR 2023 to 20 APR 2023

SC-1, 23 MAR 2023 to 20 APR 2023



ELEV 279	TDZE 274
----------	----------



CATEGORY	A	B	C	D
LPV DA		474-1	200 (200-1)	
LNAV/VNAV DA		574-1	300 (300-1)	
LNAV MDA	660-1 386 (400-1)		660-1 1/8 386 (400-1 1/8)	
CIRCLING	760-1 481 (500-1)		800-1 1/2 521 (600-1 1/2)	1000-2 1/4 721 (800-2 1/4)

REIL Rwy 18 0
MIRL Rwy 4-22, 18-36 0