

WAAS CH 90299 W20A	APP CRS 202°	Rwy ldg TDZE 6527 1194 Apt Elev 1194
--	------------------------	--

RNAV (GPS) RWY 20

WALLA WALLA RGNL (ALW)

RNP APCH - GPS.

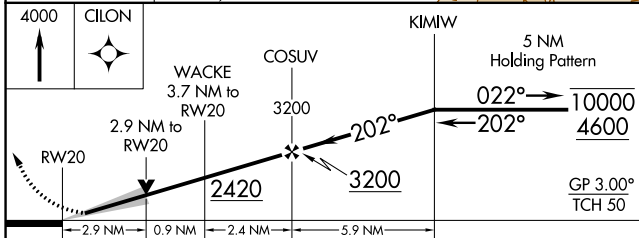
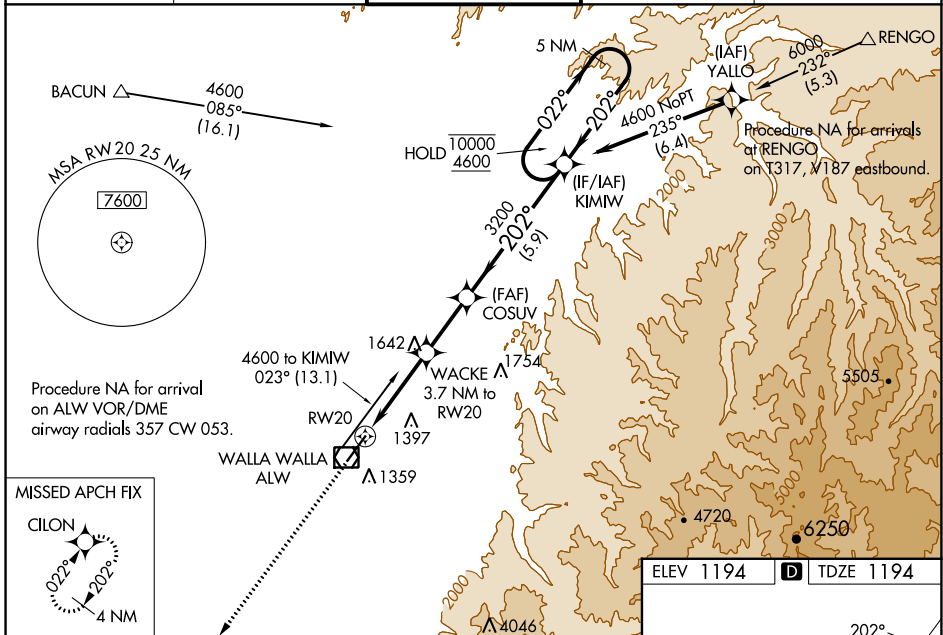
▽
▲

For uncompensated Baro-VNAV systems, LNAV/VNAV NA below -11°C or above 54°C. For inop ALS, increase LNAV/VNAV visibility to 1% SM. *RVR 1800 authorized with use of FD or AP or HUD to DA.

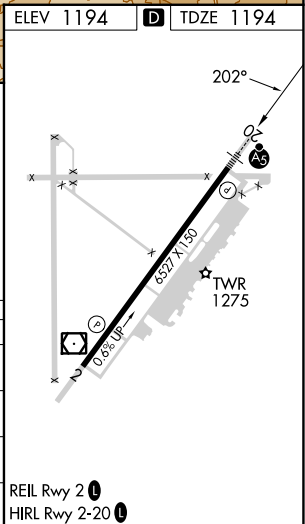
MALSRL

MISSED APPROACH:
Climb to 4000 direct CILON and hold.

ASOS 135.875	SPOKANE APP CON 133.15 379.15	WALLA WALLA TOWER ★ 118.5 (CTAF) 289.4	GND CON 121.6 289.4	UNICOM 122.95
------------------------	---	--	-------------------------------	-------------------------



CATEGORY	A	B	C	D
LPV DA*	1394/24		200 (200-½)	
LNAV/VNAV DA	1773-1¼		579 (600-1¼)	
LNAV MDA	2160/40 966 (1000-¾)	2160/55 966 (1000-1)	2160-2½	966 (1000-2½)
CIRCLING	2160-1¼ 966 (1000-1¼)	2160-1½ 966 (1000-1½)	2160-3 966 (1000-3)	2300-3 1106 (1200-3)



NW-1, 23 MAR 2023 to 20 APR 2023

NW-1, 23 MAR 2023 to 20 APR 2023