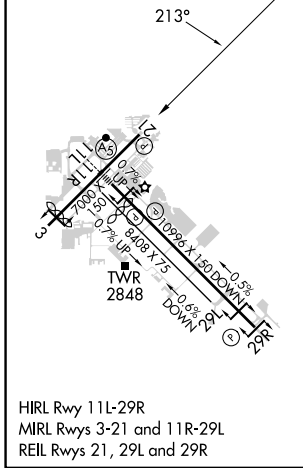
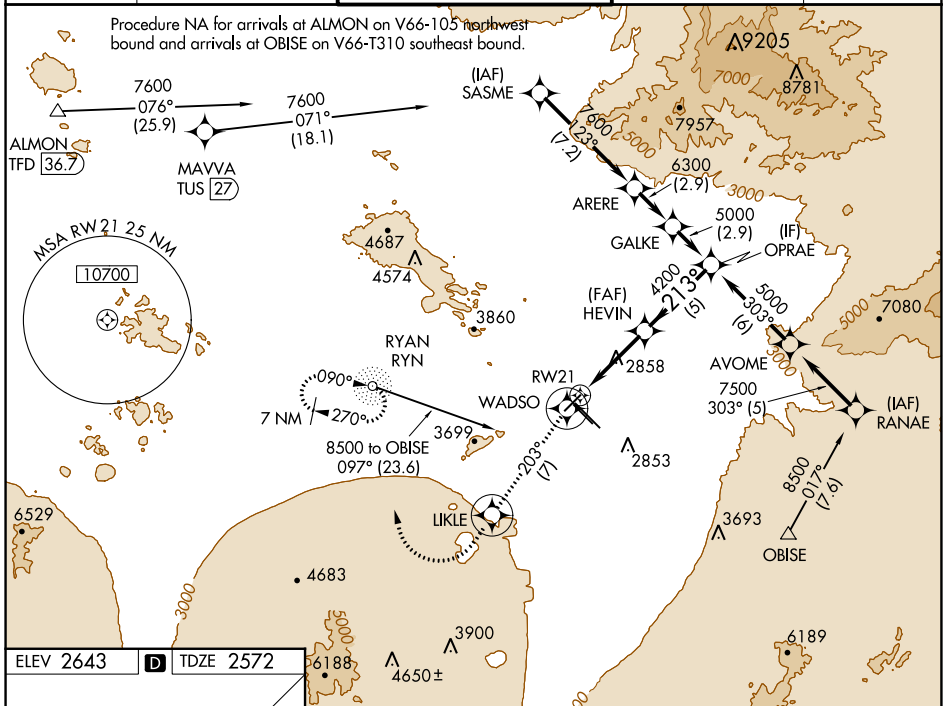


APP CRS	Rwy Idg	<b>6000</b>
<b>213°</b>	TDZE	<b>2572</b>
	Apt Elev	<b>2643</b>

# RNAV (GPS) RWY 21

TUCSON INTL (TUS)

RNP APCH.		MISSED APPROACH: Climb to 6000 on course 213° to WADSO and track 203° to LIKLE and right turn direct RYN NDB and hold.				
		ATIS <b>123.8 279.65</b>	TUCSON APP CON <b>119.4 318.1</b>	TUCSON TOWER <b>118.3 257.8</b>	GND CON <b>124.4 348.6</b>	CLNC DEL <b>126.65 326.2</b>



ELEV 2643	<b>D</b>	TDZE 2572	
6000	WADSO	LIKLE	RYN
crs 213°		tr 203°	
*LNAV only.			
HEVIN 4200		OPRAE 5000	
RWY 21 1.7 NM to RWY 21		4200	
1.7		3.2 NM	
		5 NM	
GP 3.00° TCH 50			

CATEGORY	A	B	C	D
LNAV/VNAV DA	3145-2		573 (600-2)	
LNAV MDA	3160-1	588 (600-1)	3160-1½ 588 (600-1½)	3160-1¾ 588 (600-1¾)
CIRCLING	3160-1 517 (600-1)	3220-1 577 (600-1)	3220-1½ 577 (600-1½)	3660-3 1017 (1100-3)

SW-4, 23 MAR 2023 to 20 APR 2023

SW-4, 23 MAR 2023 to 20 APR 2023