

WAAS CH 63140 W27A	APP CRS 276°	Rwy Idg TDZE Apt Elev	4056 1518 1519
--	------------------------	-----------------------------	---

RNAV (GPS) RWY 27

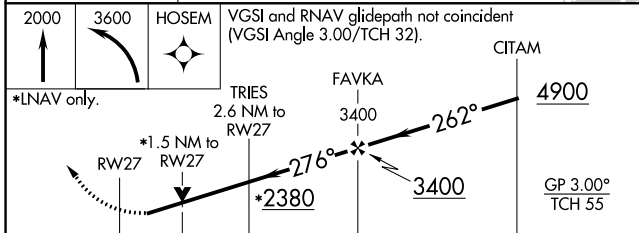
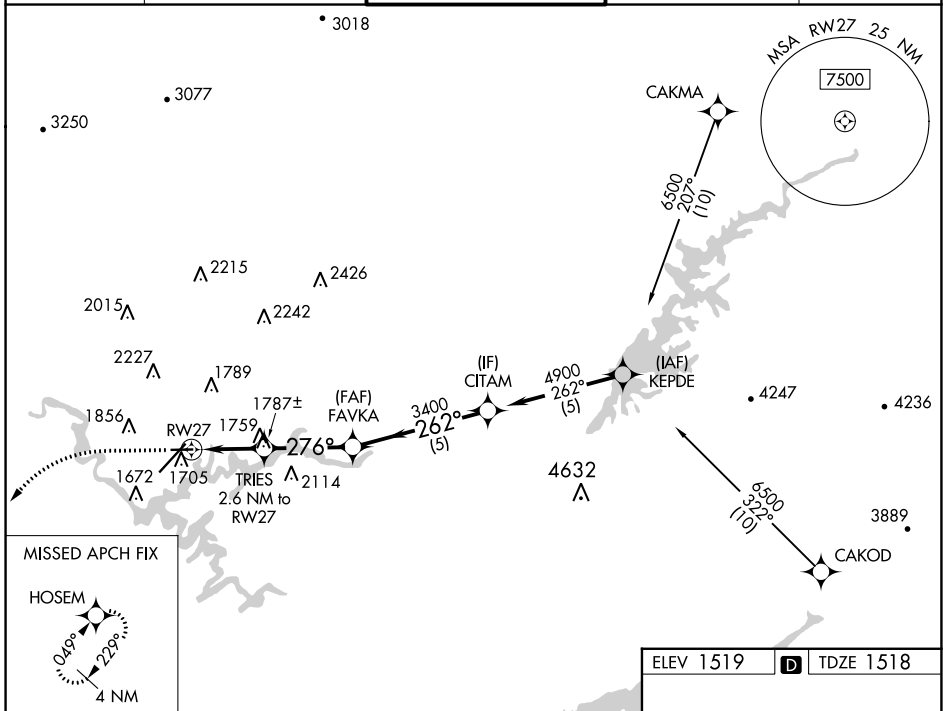
TRI-CITIES (TRI)

RNP APCH.

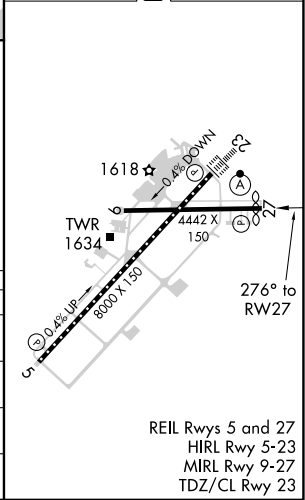
⚠ Circling to Rwy 9 NA at night. Circling NA northwest of Rws 9 and 23.
⚠ Rwy 27 helicopter visibility reduction below $\frac{3}{4}$ SM NA. For uncompensated Baro-VNAV systems, LNAV/VNAV NA below -1.4°C or above 54°C.

MISSED APPROACH: Climb to 2000 then climbing left turn to 3600 direct HOSEM and hold.

ATIS 118.25	TRI-CITY APP CON ★ 134.425 349.0	TRI-CITY TOWER ★ 119.5 (CTAF) 257.8	GND CON 121.7 348.6	UNICOM 122.95
-----------------------	--	---	-------------------------------	-------------------------



ELEV 1519	D	TDZE 1518
-----------	----------	-----------



SE-1, 23 MAR 2023 to 20 APR 2023

SE-1, 23 MAR 2023 to 20 APR 2023