

LOC I-BON 111.5	APP CRS 050°	Rwy Idg TDZE Apt Elev	8000 1498 1519
---------------------------	------------------------	-----------------------------	---

ILS or LOC RWY 5

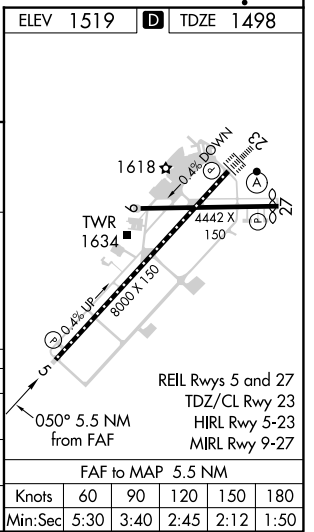
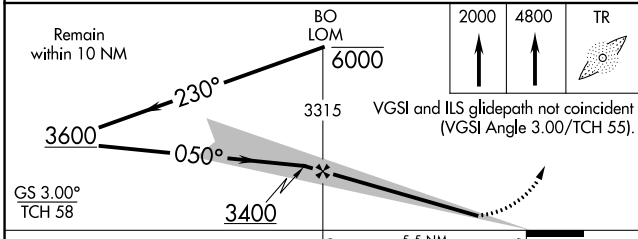
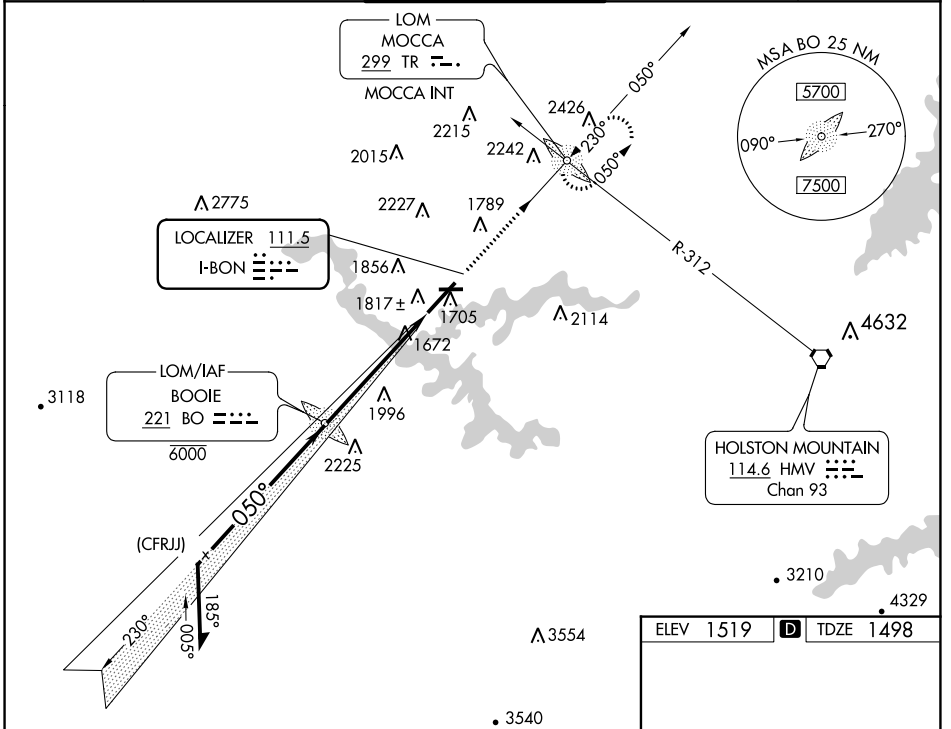
TRI-CITIES (TRI)

ADF required. RADAR required for procedure entry.

⚠ Circling to Rwy 9 NA at night. Circling NA northwest of Rws 9 and 23. Autopilot coupled approach NA below 2200. Procedure NA when control tower closed.

MISSED APPROACH: Climb to 2000 then climb to 4800 direct MOCCA LOM INT and hold, continue climb-in-hold to 4800.

ATIS 118.25	TRI-CITY APP CON ★ 134.425 349.0	TRI-CITY TOWER ★ 119.5 (CTAF) 257.8	GND CON 121.7 348.6	UNICOM 122.95
-----------------------	--	---	-------------------------------	-------------------------



CATEGORY	A	B	C	D
S-ILS 5		1698/40	200 (200-¾)	
S-LOC 5	2100/55	602 (600-1)	2100-1¾	602 (600-1¾)
C CIRCLING	2120-1 601 (700-1)	2180-1 661 (700-1)	2320-2¼ 801 (900-2¼)	2500-3 981 (1000-3)

SE-1, 23 MAR 2023 to 20 APR 2023

SE-1, 23 MAR 2023 to 20 APR 2023