

HI-TACAN RWY 31

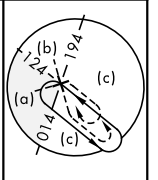
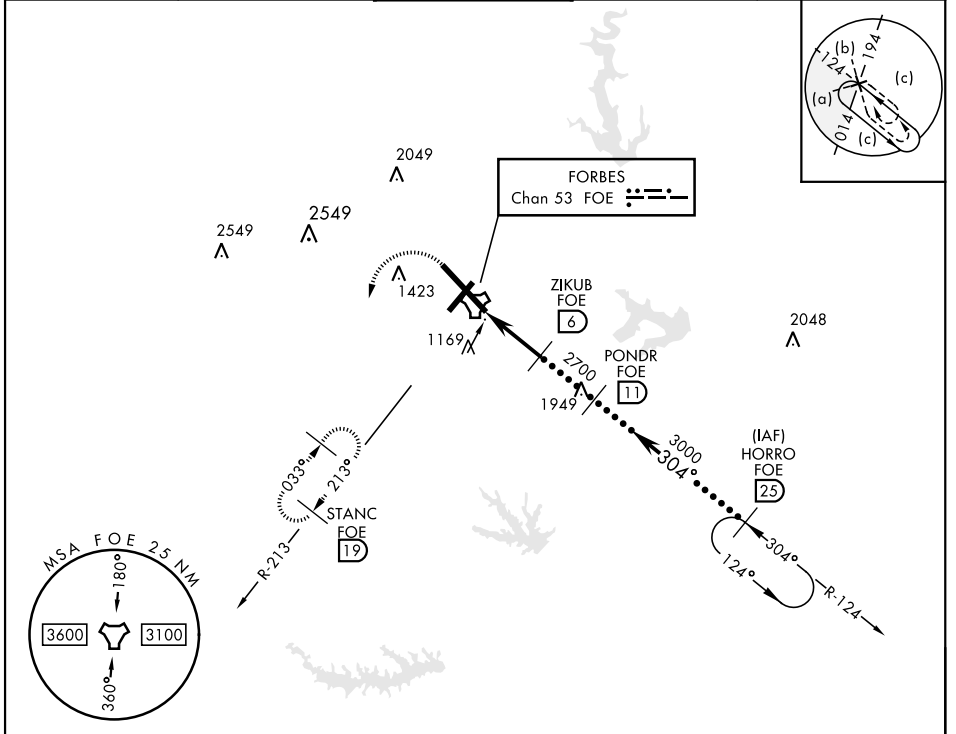
TACAN Chan 53	APCH CRS 304°	Rwy ldg 12,803 TDZE 1037 Arprt Elev 1078	AL-424 [USAF]	TOPEKA RGNL (KFOE)
-------------------------	-------------------------	---	---------------	--------------------

▼ * When ALS inop, increase CAT CDE vis to 1 $\frac{1}{2}$ miles.

MALS R 

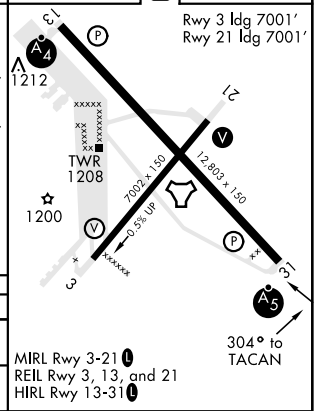
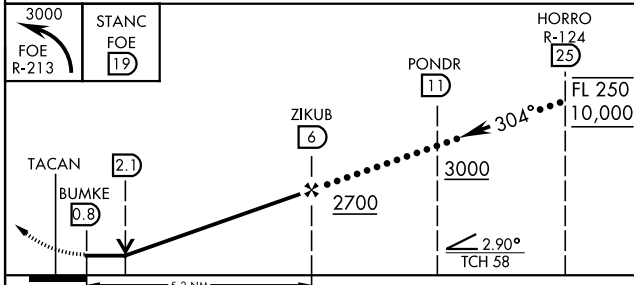
MISSED APPROACH: Climbing left turn to 3000 via heading 190° and FOE TACAN R-213 to STANC/19° DME and hold.

ATIS 128.25	KANSAS CITY CENTER 123.8 343.7	FORBES TOWER ★ 120.8 (CTAF) 340.2	GND CON 118.425 275.8	UNICOM 122.95
-----------------------	--	---	---------------------------------	-------------------------



EMERG SAFE ALT 100 NM 3600

ELEV 1078 **D** TDZE 1037



CATEGORY	C		D		E
S-31 *	1520/50		483	(500-1)	
CIRCLING	1580-1 $\frac{1}{2}$ 502 (600-1 $\frac{1}{2}$)	1700-2 622 (700-2)	1720-2 $\frac{1}{4}$ 642 (700-2 $\frac{1}{4}$)		

HI-TACAN RWY 31



NC-2, 23 MAR 2023 to 20 APR 2023

NC-2, 23 MAR 2023 to 20 APR 2023