

TAMPA, FLORIDA

ILS or LOC RWY 5

LOC I-MCF 109.5	APCH CRS 044°	Rwy Idg 11,421 TDZE 10 Arpt Elev 14
---------------------------	-------------------------	--

AL-418 [USAF]

MACDILL AFB (KMCF)

RADAR or DME required.



† MISSED APPROACH: Climb to 2700 via MCF TACAN R-075 to MCF 22 DME and hold. Cross 8 DME at 1700.

*When ALS inop, increase RVR to 40, vis to 3/4 mile.
 **When ALS inop, increase CAT AB RVR to 55, vis to 1 mile; CAT CDE RVR to 60, vis to 1 1/8 miles.

ATIS 133.825 270.1	TAMPA APP CON 124.95 354.0	TOWER 120.175 294.7	GND CON 118.575 275.8
------------------------------	--------------------------------------	-------------------------------	---------------------------------

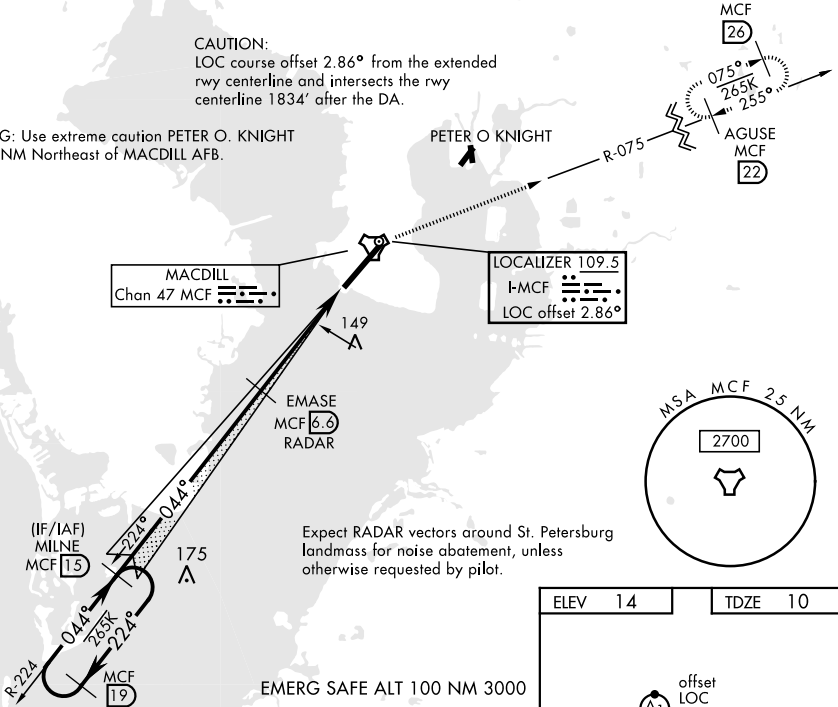
***Circling not authorized NW of Rwy 5-23.

† RNAV or ATC RADAR required for missed approach.

CAUTION:
 LOC course offset 2.86° from the extended rwy centerline and intersects the rwy centerline 1834' after the DA.

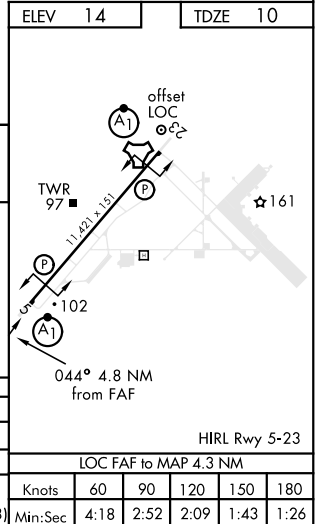
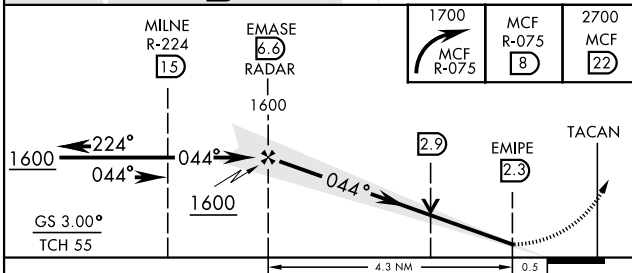
WARNING: Use extreme caution PETER O. KNIGHT airport 4 NM Northeast of MACDILL AFB.

PETER O KNIGHT



Expect RADAR vectors around St. Petersburg landmark for noise abatement, unless otherwise requested by pilot.

EMERG SAFE ALT 100 NM 3000



CATEGORY	A	B	C	D	E
S-ILS 5 *	260/24 (300-1/2)				
S-LOC 5 **	420/24	410 (500-1/2)	420/40		410 (500-3/4)
CIRCLING ***	500-1 486 (500-1)	540-1 526 (600-1)	540-1 1/2 526 (600-1 1/2)	580-2 566 (600-2)	1020-3 1006 (1100-3)

HIRL Rwy 5-23					
LOC FAF to MAP 4.3 NM					
Knots	60	90	120	150	180
Min:Sec	4:18	2:52	2:09	1:43	1:26

TAMPA, FLORIDA
Orig 31DEC20

27°51'N-82°31'W

MACDILL AFB (KMCF)

ILS or LOC RWY 5

SE-3, 23 MAR 2023 to 20 APR 2023

SE-3, 23 MAR 2023 to 20 APR 2023