

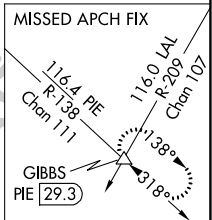
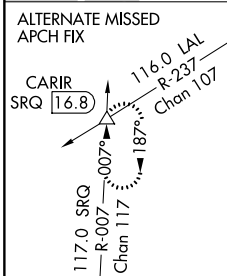
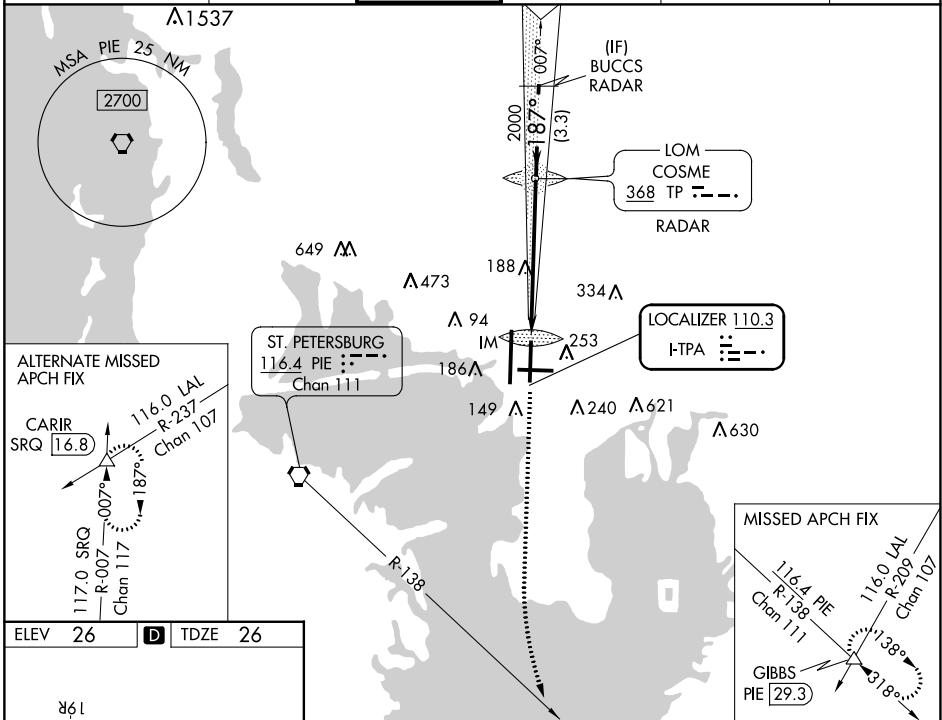
LOC I-TPA 110.3	APP CRS 187°	Rwy ldg 8300
		TDZE 26
		Apt Elev 26

ILS RWY 19L (SA CAT I)

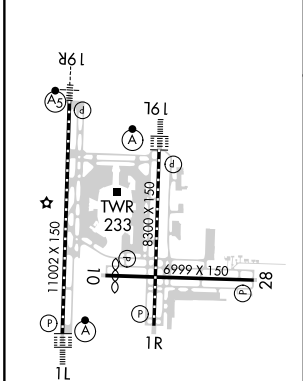
TAMPA INTL (TPA)

	ALSIF-2	MISSED APPROACH: Climb to 600 then climbing left turn to 2800 on heading 160° and on PIE VORTAC R-138 to GIBBS INT/PIE 29.3 DME and hold.

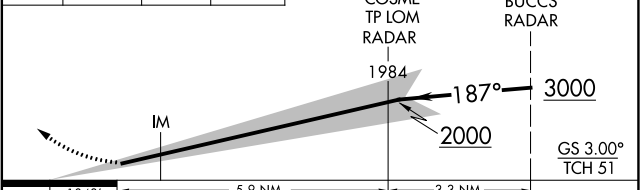
ARR 126.45	D-ATIS 128.475	DEP 128.475	TAMPA APP CON 118.5 307.175	TAMPA TOWER 119.5 269.4	GND CON 121.7 269.4	CLNC DEL 133.6	CPDLC
----------------------	--------------------------	-----------------------	---------------------------------------	-----------------------------------	-------------------------------	--------------------------	-------



ELEV 26	D	TDZE 26
---------	----------	---------



600	2800	PIE R-138	GIBBS	VGSI and ILS glidepath not coincident (VGSI Angle 3.00/TCH 61).



CATEGORY	A	B	C	D
S-ILS 19L	RA 150/14		150	DA 176

SA CATEGORY I ILS- SPECIAL AIRCREW & AIRCRAFT CERTIFICATION REQUIRED

REIL Rwy 1R
TDZ/CL Rwy 1L and 19L
HIRL Rwy 1L-19R, 1R-19L, and 10-28

SE-3, 23 MAR 2023 to 20 APR 2023

SE-3, 23 MAR 2023 to 20 APR 2023