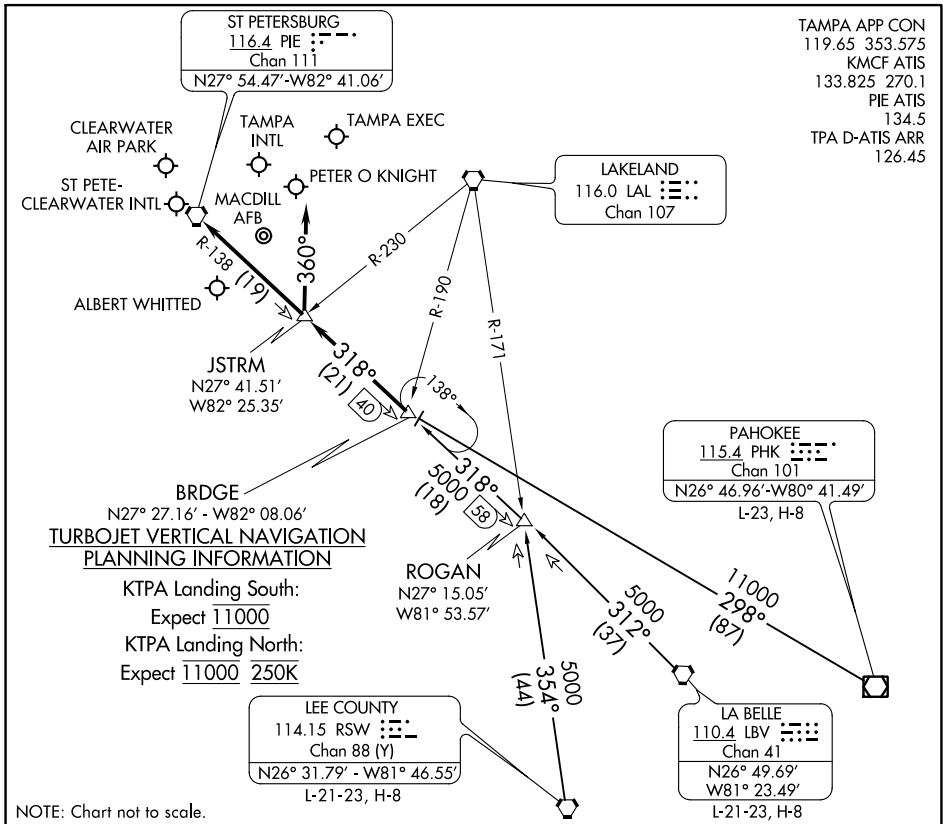


BRDGE NINE ARRIVAL

TAMPA, FLORIDA



SE-3, 23 MAR 2023 to 20 APR 2023

SE-3, 23 MAR 2023 to 20 APR 2023

ARRIVAL ROUTE DESCRIPTION

LA BELLE TRANSITION (LBV.BRDGE9): From over LBV VORTAC on LBV R-312 and PIE R-138 to BRDGE thence. . . .

LEE COUNTY TRANSITION (RSW.BRDGE9): From over RSW VORTAC on RSW R-354 to ROGAN, then on PIE R-138 to BRDGE thence. . . .

PAHOKEE TRANSITION (PHK.BRDGE9): From over PHK VOR/DME on PHK R-298 to BRDGE thence. . . .

KTPA:

RUNWAYS 19L/R: From over BRDGE on PIE R-138 to JSTRM. Depart JSTRM heading 360° for RADAR vectors to final approach course.

RUNWAYS 1L/R: From over BRDGE on PIE R-138 to PIE VORTAC. Expect RADAR vectors to final approach course after BRDGE.

KPIE, KCLW, KTPF, KSPG, KMCF, KVDF:

From over BRDGE on PIE R-138 to PIE VORTAC. Expect RADAR vectors to final approach course/airport after BRDGE.

LOST COMMUNICATIONS: Standard.

BRDGE NINE ARRIVAL

TAMPA, FLORIDA