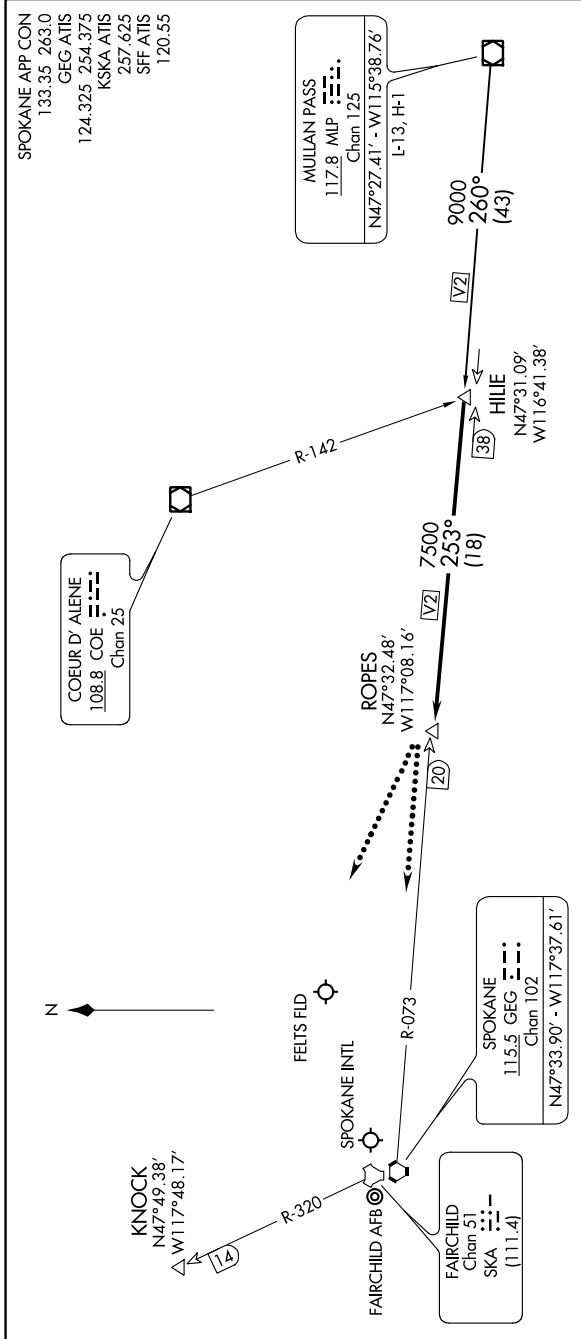


HILIE TWO ARRIVAL

AL-403 (FAA)

SPOKANE, WASHINGTON

NW-1, 23 MAR 2023 to 20 APR 2023



NOTE: DME and RADAR required.
 NOTE: Chart not to scale.

ARRIVAL ROUTE DESCRIPTION

MULLAN PASS TRANSITION (MLP.HILIE2): From over MLP VOR/DME via MLP R-260 to HILIE INT. Thence. . . .

. . . . From over HILIE INT via GEG R-073 to ROPES. Expect radar vectors to final approach course.

LOST COMMUNICATIONS: After ROPES:

Landing Spokane Intl or Felts Fld: Proceed to GEG VORTAC via GEG R-073, maintain last assigned altitude to GEG.

Landing Fairchild AFB: Proceed to KNOCK via direct, maintain last assigned altitude to KNOCK.

HILIE TWO ARRIVAL

(HILIE.HILIE2) 13JAN11

SPOKANE, WASHINGTON

NW-1, 23 MAR 2023 to 20 APR 2023