

VORTAC GEG	APP CRS	Rwy Idg	4499
115.5	039°	TDZE	1949
Chan 102		Apt Elev	1957

# VOR RWY 4L

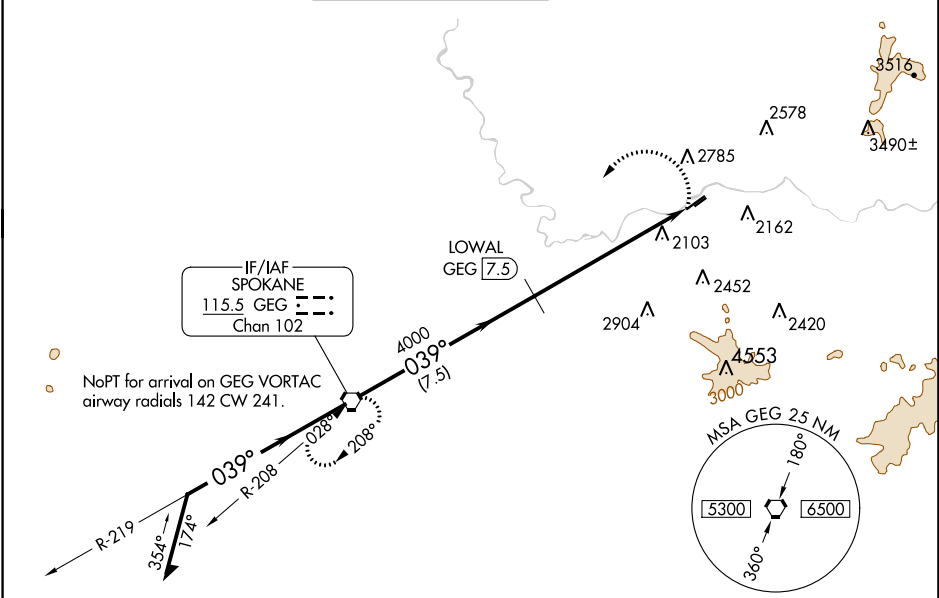
FELTS FLD (S'F'F)

DME required.

**⚠** Circling NA northwest of Rwy 4L-22R. VDP NA when using Spokane Intl altimeter setting. Rwy 4L helicopter visibility reduction below 3/4 SM NA.  
**⚠** -16°C When local altimeter setting not received, use Spokane Intl altimeter setting and increase all MDAs 80 feet. Circling Rwy 22L NA at night.

MISSED APPROACH: Climbing left turn to 4500 direct GEG VORTAC and hold.

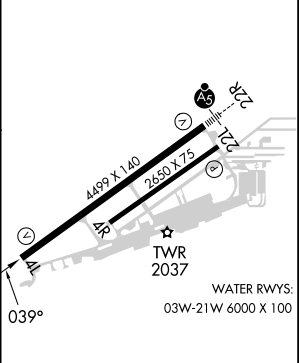
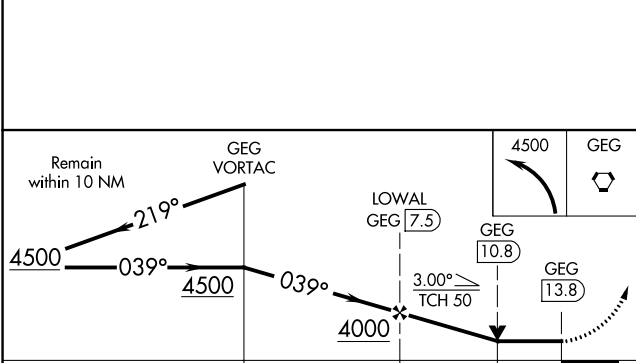
ATIS <b>120.55</b>	SPOKANE APP CON <b>133.35 263.0</b>	FELTS TOWER * <b>132.5 (CTAF) 239.025</b>	GND CON <b>121.7</b>	CLNC DEL <b>121.7</b>	UNICOM <b>122.95</b>
-----------------------	--	--	-------------------------	--------------------------	-------------------------



NW-1, 23 MAR 2023 to 20 APR 2023

NW-1, 23 MAR 2023 to 20 APR 2023

ELEV 1957	<b>D</b> TDZE 1949
-----------	--------------------



CATEGORY	A	B	C	D
S-4L	2960-1¼ 1011 (1100-1¼)	2960-1½ 1011 (1100-1½)	2960-3	1011 (1100-3)
<b>C</b> CIRCLING	2960-1¼ 1003 (1100-1¼)	2960-1½ 1003 (1100-1½)	3100-3 1143 (1200-3)	3360-3 1403 (1500-3)

REIL Rwy 4L <b>Ⓛ</b>	MRL Rwy 4L-22R <b>Ⓛ</b>
----------------------	-------------------------