

|  |                        |                             |   |
|--|------------------------|-----------------------------|---|
| WAAS<br>CH <b>58122</b><br><b>W22A</b> | APP CRS<br><b>220°</b> | Rwy Idg<br>TDZE<br>Apt Elev | <b>7001</b><br><b>378</b><br><b>378</b> |
|--|------------------------|-----------------------------|---|

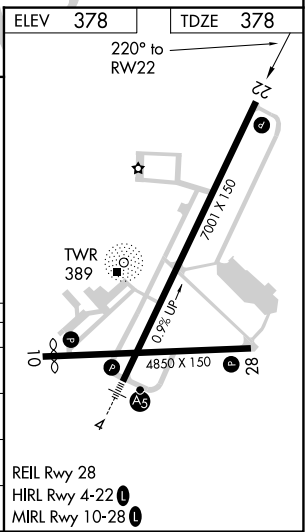
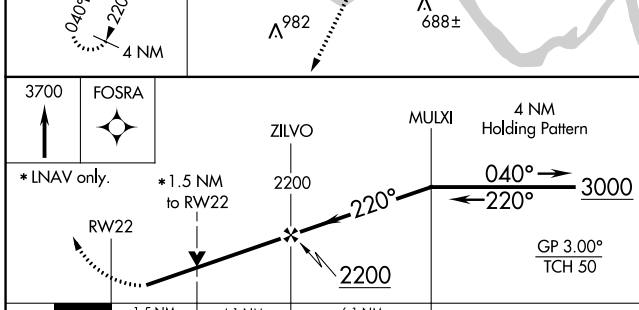
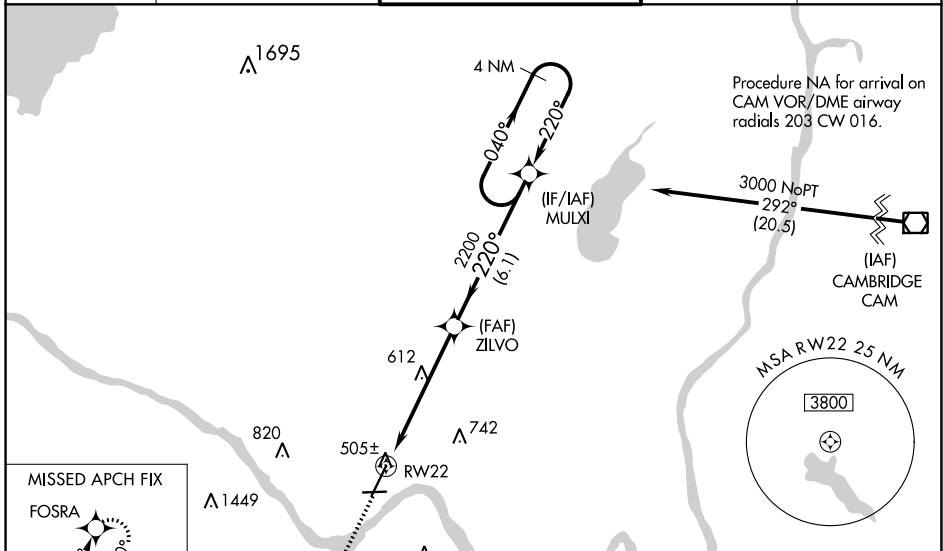
# RNAV (GPS) RWY 22

SCHENECTADY COUNTY (SCH)

**NA** Circling Rwy 10 NA at night. Baro-VNAV NA when using Albany altimeter setting. For uncompensated Baro-VNAV systems, LNAV/VNAV NA below -15°C (5°F) or above 54°C (130°F). DME/DME RNP-0.3 NA. Helicopter visibility reduction below 3/4 SM NA. VDP NA with Albany altimeter setting. When local altimeter setting not received, use Albany altimeter setting and increase LPV DA to 661, LNAV/VNAV DA to 749, and all MDA 40 feet, increase LPV and LNAV/VNAV all Cats, LNAV Cat C and D and Circling Cat C visibility 1/2 mile.

**MISSED APPROACH:**  
Climb to 3700 direct FOSRA and hold.

|                          |  |  |                         |                         |
|--------------------------|--|--|-------------------------|-------------------------|
| AWOS-3<br><b>119.275</b> | ALBANY APP CON<br><b>132.825 263.075</b> | SCHENECTADY TOWER ★<br><b>121.3 (CTAF) 321.1</b> | GND CON<br><b>121.9</b> | UNICOM<br><b>122.95</b> |
|--------------------------|--|--|-------------------------|-------------------------|



| CATEGORY     | A                    | B                    | C                             | D                      |
|--------------|----------------------|----------------------|-------------------------------|------------------------|
| LPV DA       |                      | 628-3/4              | 250 (300-3/4)                 |                        |
| LNAV/VNAV DA |                      | 716-1 1/8            | 338 (400-1 1/8)               |                        |
| LNAV MDA     | 900-1                | 522 (600-1)          | 900-1 1/2                     | 522 (600-1 1/2)        |
| CIRCLING     | 900-1<br>522 (600-1) | 940-1<br>562 (600-1) | 1120-2 1/4<br>742 (800-2 1/4) | 1320-3<br>942 (1000-3) |

NE-2, 23 MAR 2023 to 20 APR 2023

NE-2, 23 MAR 2023 to 20 APR 2023