

(SAYOW2.SAYOW) 17285

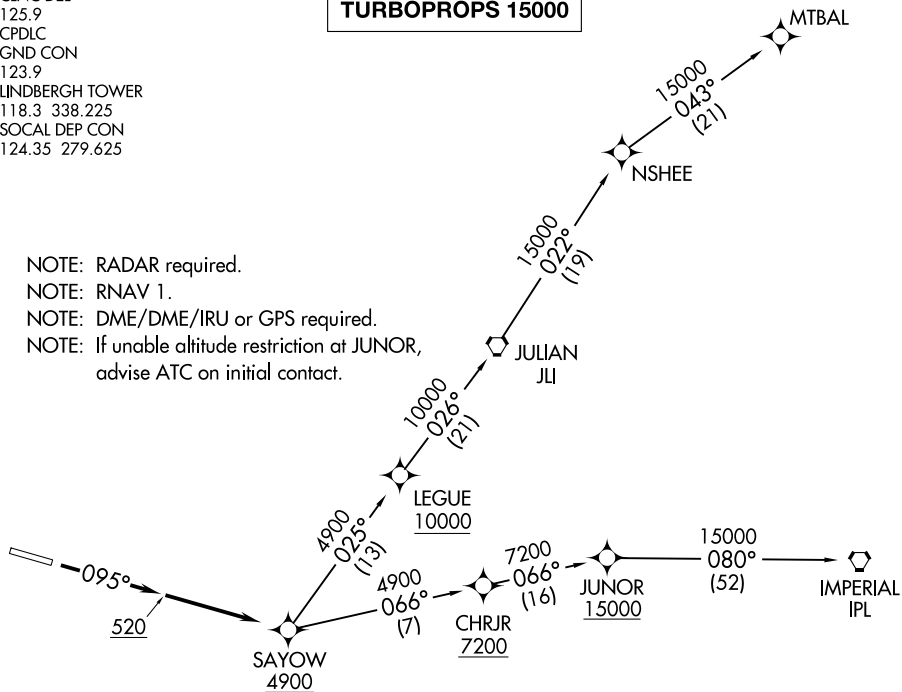
SAYOW TWO DEPARTURE (RNAV) AL-373 (FAA)

SAN DIEGO INTL (SAN)
SAN DIEGO, CALIFORNIA

D-ATIS
134.8
CLNC DEL
125.9
CPDLC
GND CON
123.9
LINDBERGH TOWER
118.3 338.225
SOCAL DEP CON
124.35 279.625

TOP ALTITUDE:
JETS FL190
TURBOPROPS 15000

NOTE: RADAR required.
NOTE: RNAV 1.
NOTE: DME/DME/IRU or GPS required.
NOTE: If unable altitude restriction at JUNOR,
advise ATC on initial contact.



TAKEOFF MINIMUMS

Rwy 9: 400-1 with minimum climb of 610' per NM to 1900 or standard with minimum climb of 687' per NM to 1900.
Rwy 27: NA-ATC.

NOTE: Chart not to scale.

DEPARTURE ROUTE DESCRIPTION

TAKEOFF RUNWAY 9: Climb heading 095° to 520, then direct to cross SAYOW at or above 4900, thence

. . . . on (transition) jets maintain FL190, turboprops maintain 15000, expect filed altitude 10 minutes after departure.

IMPERIAL TRANSITION (SAYOW2.IPL)

MTBAL TRANSITION (SAYOW2.MTBAL)

SAYOW TWO DEPARTURE (RNAV)

(SAYOW2.SAYOW) 12OCT17

SAN DIEGO, CALIFORNIA
SAN DIEGO INTL (SAN)

SW-3, 23 MAR 2023 to 20 APR 2023

SW-3, 23 MAR 2023 to 20 APR 2023