

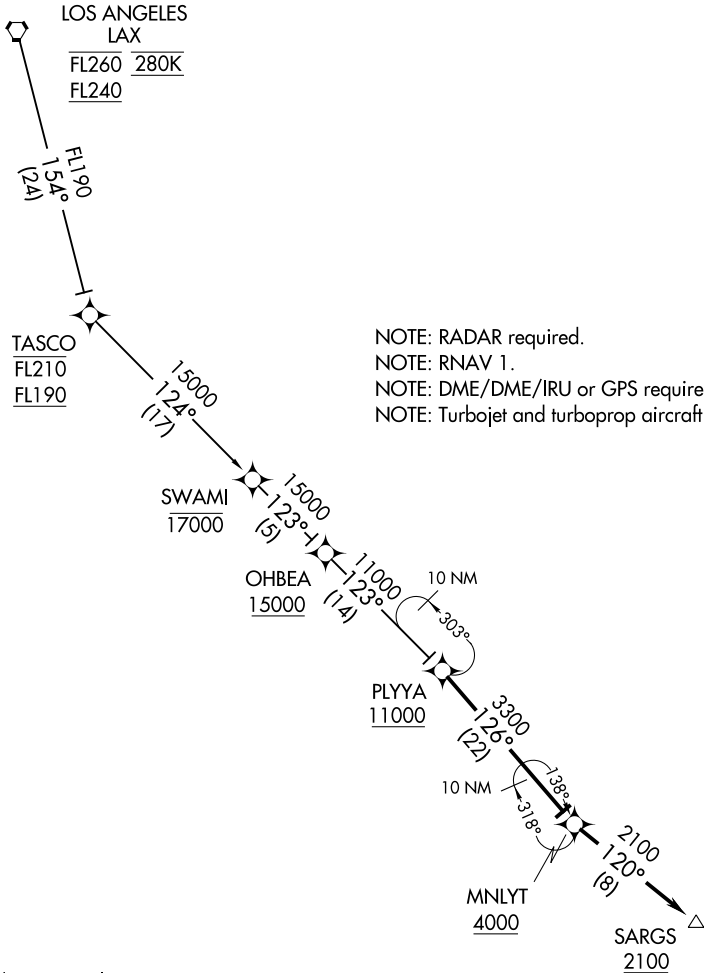
(PLYA.PLYA1) 17173

PLYA ONE ARRIVAL (RNAV)

AL-373 (FAA)

SAN DIEGO INTL (SAN)
SAN DIEGO, CALIFORNIA

SOCAL APP CON
128.1 281.4
D-ATIS 134.8



NOTE: RADAR required.
 NOTE: RNAV 1.
 NOTE: DME/DME/IRU or GPS required.
 NOTE: Turbojet and turboprop aircraft only.

SW-3, 23 MAR 2023 to 20 APR 2023

SW-3, 23 MAR 2023 to 20 APR 2023

NOTE: Chart not to scale.

ARRIVAL ROUTE DESCRIPTION

LOS ANGELES TRANSITION (LAX.PLYA1)

From PLYYA on track 126° to cross MNLYT at or above 4000.

LANDING RUNWAY 9: From MNLYT on track 120° to cross SARGS at or above 2100.

Expect ILS or LOC RWY 9 approach.

PLYA ONE ARRIVAL (RNAV)

(PLYA.PLYA1) 02MAR17

SAN DIEGO, CALIFORNIA
SAN DIEGO INTL (SAN)