

LOC/DME I-SAN	APP CRS	Rwy Idg	<b>7280</b>
<b>111.55</b>	<b>095°</b>	TDZE	<b>17</b>
Chan <b>52 (Y)</b>		Apt Elev	<b>17</b>

# ILS Z or LOC Z RWY 9

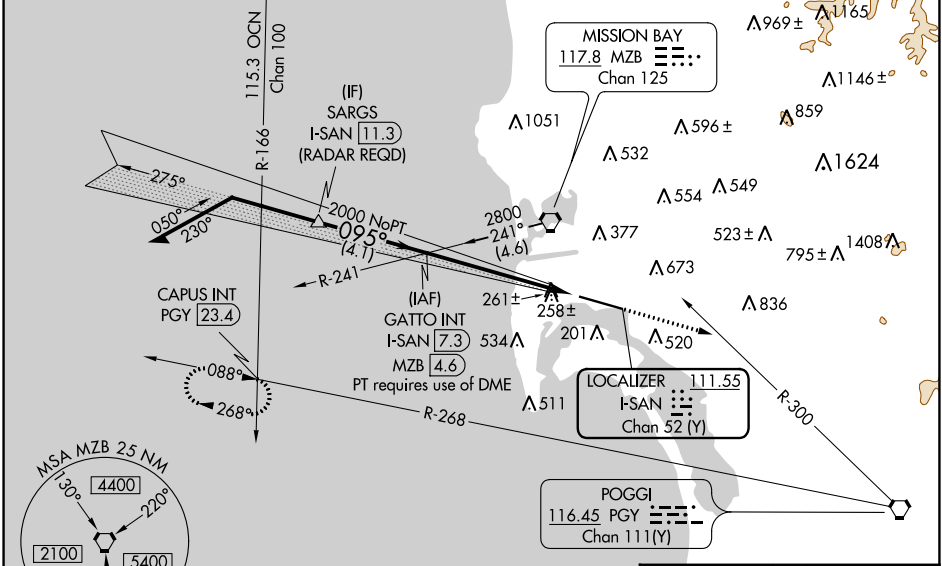
SAN DIEGO INTL (SAN)

**⚠** Circling NA north of Rwy 9-27. Autopilot coupled approach NA below 530. When Circling to Rwy 27 at night, operational VGSI required, remain on or above VGSI glidepath until threshold. For inop ALS, increase S-LOC Cat A/B visibility to RVR 5500, and Cat C/D to 1 3/8 SM. LOC only: Rwy 9 helicopter visibility reduction below RVR 4000 NA.



**MISSED APPROACH:** Climb to 5000 on heading 095° and on PGY VORTAC R-300 to PGY VORTAC, then right turn on PGY VORTAC R-268 to CAPUS INT/23.4 DME and hold.  
 #Missed approach requires minimum climb of 280 feet per NM to 3800; if unable to meet climb gradient, see ILS Y or LOC Y RWY 9.

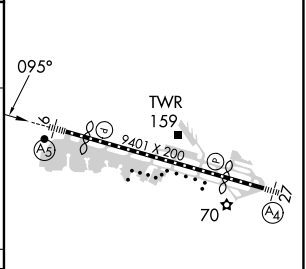
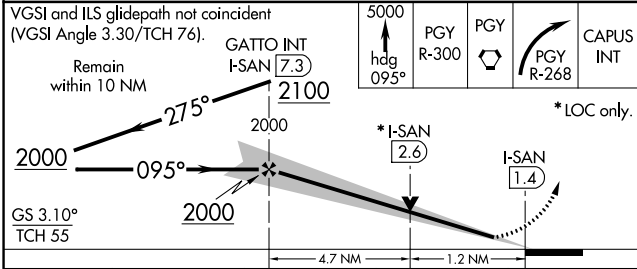
D-ATIS	SOCAL APP CON	LINDBERGH TOWER	GND CON	CLNC DEL	CPDLC
<b>134.8</b>	<b>119.6 363.1 (WEST)</b> <b>124.35 279.625 (EAST)</b>	<b>118.3 338.225</b>	<b>123.9</b>	<b>125.9</b>	



SW-3, 23 MAR 2023 to 20 APR 2023

SW-3, 23 MAR 2023 to 20 APR 2023

ELEV 17	<b>D</b>	TDZE 17
---------	----------	---------



CATEGORY	A	B	C	D
S-ILS 9#	217/18 200 (200-1/2)			
S-LOC 9	520/40	503 (600-3/4)	520/55	503 (600-1)
<b>C</b> CIRCLING	800-1 783 (800-1)	820-1 803 (900-1)	820-2 1/4 803 (900-2 1/4)	940-3 923 (1000-3)

TDZ/CL Rwys 9 and 27  
HIRL Rwy 9-27

FAF to MAP 5.9 NM

Knots	60	90	120	150	180
Min:Sec	5:54	3:56	2:57	2:22	1:58