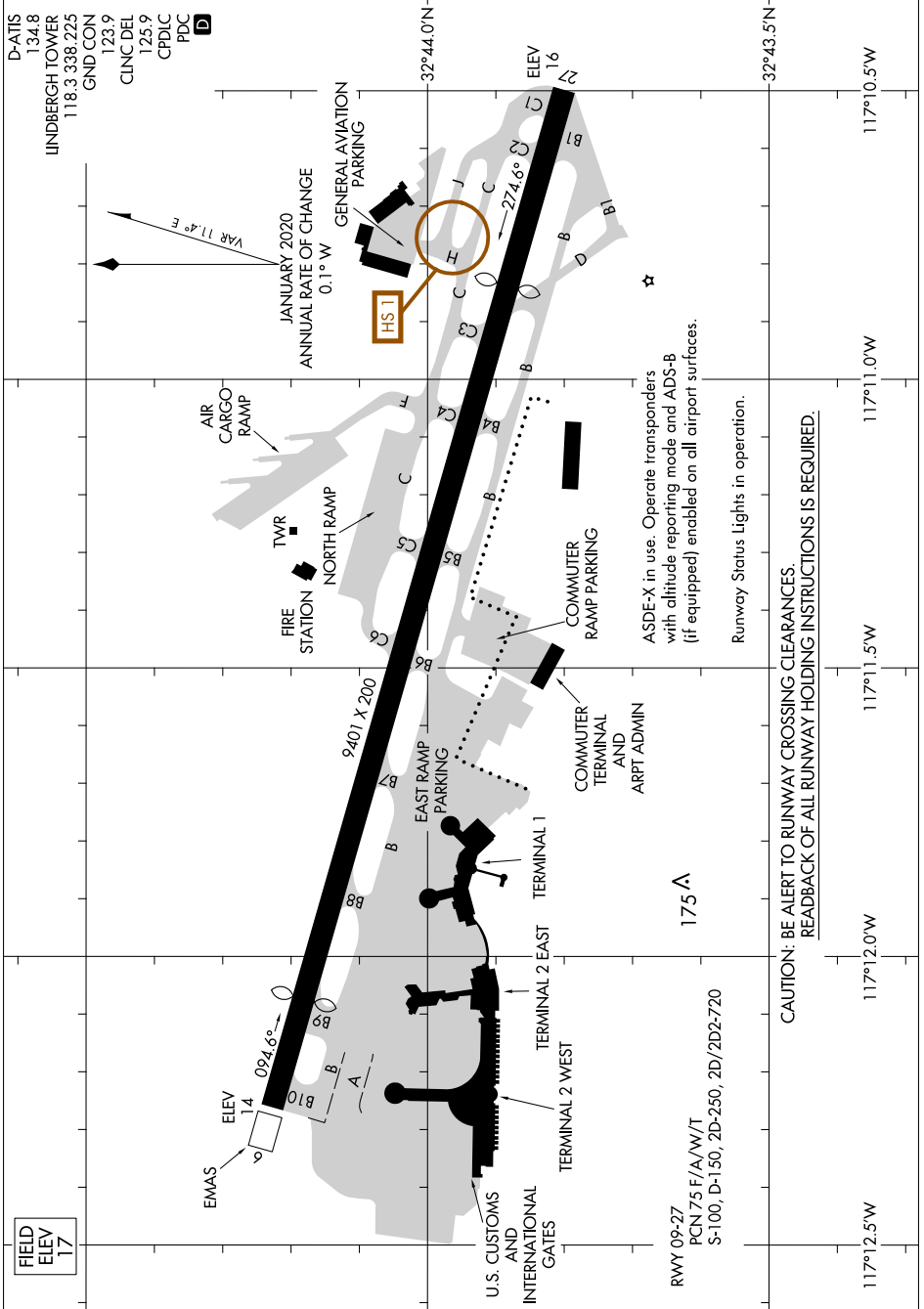


# AIRPORT DIAGRAM

SAN DIEGO INTL (SAN)  
SAN DIEGO, CALIFORNIA

AL-373 (FAA)

SW-3, 23 MAR 2023 to 20 APR 2023



ASDE-X in use. Operate transponders with altitude reporting mode and ADS-B (if equipped) enabled on all airport surfaces.

Runway Status Lights in operation.

**CAUTION: BE ALERT TO RUNWAY CROSSING CLEARANCES. READBACK OF ALL RUNWAY HOLDING INSTRUCTIONS IS REQUIRED.**

SW-3, 23 MAR 2023 to 20 APR 2023