

WAAS CH 77613 W04A	APP CRS 037°	Rwy Idg TDZE Apt Elev	8505 786 809
---------------------------------	------------------------	-----------------------------	---

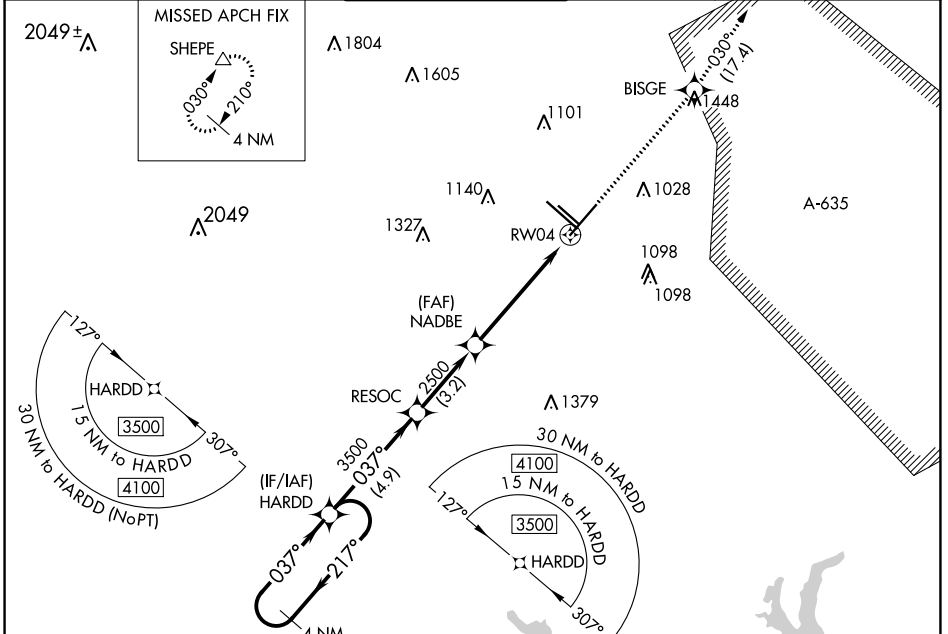
RNAV (GPS) Y RWY 4

SAN ANTONIO INTL (SAT)

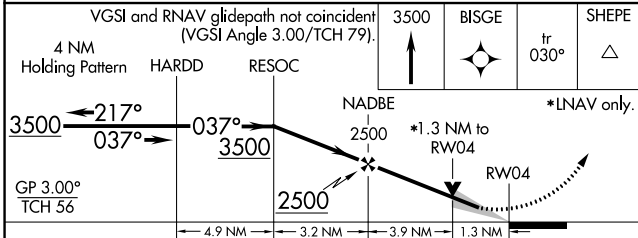
▽ Inop table does not apply to LPV. For uncompensated Baro-VNAV systems, LNAV/VNAV NA below -4°C (25°F) or above 54°C (130°F). Circling NA west of Rwy 4 and 13R. DME/DME RNP-0.3 NA. For inop ALS, increase LNAV/VNAV all Cats and LNAV Cats C and D visibility to 1½.

MALS MISSED APPROACH: Climb to 3500 direct BISGE and track 030° to SHEPE and hold.

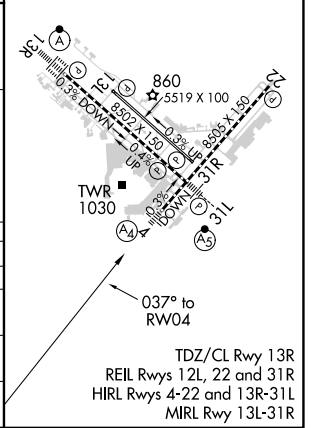
D-ATIS 118.9	SAN ANTONIO APP CON 125.1 307.0	SAN ANTONIO TOWER 119.8 257.8	GND CON 121.9 348.6	CLNC DEL 126.7	CPDLC
------------------------	---	---	-------------------------------	--------------------------	-------



ELEV 809	D TDZE 786
----------	-------------------



CATEGORY	A	B	C	D
LPV DA		986/40	200 (200-¾)	
LNAV/VNAV DA		1201/60	415 (400-1¼)	
LNAV MDA	1280/40	494 (500-¾)	1280/60	494 (500-1¼)
CIRCLING	1300-1 491 (500-1)	1400-1 591 (600-1)	1420-1¾ 611 (700-1¾)	1520-2¼ 711 (800-2¼)



SC-3, 23 MAR 2023 to 20 APR 2023

SC-3, 23 MAR 2023 to 20 APR 2023