


APP CRS	Rwy Idg	<b>8502</b>
<b>308°</b>	TDZE	<b>790</b>
	Apt Elev	<b>809</b>

# RNAV (RNP) Z RWY 31L

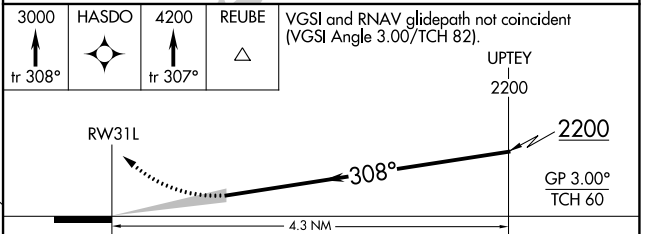
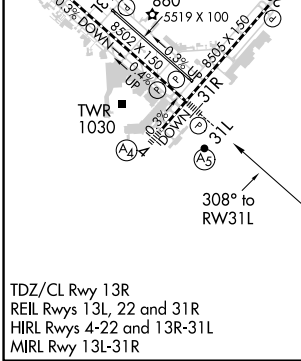
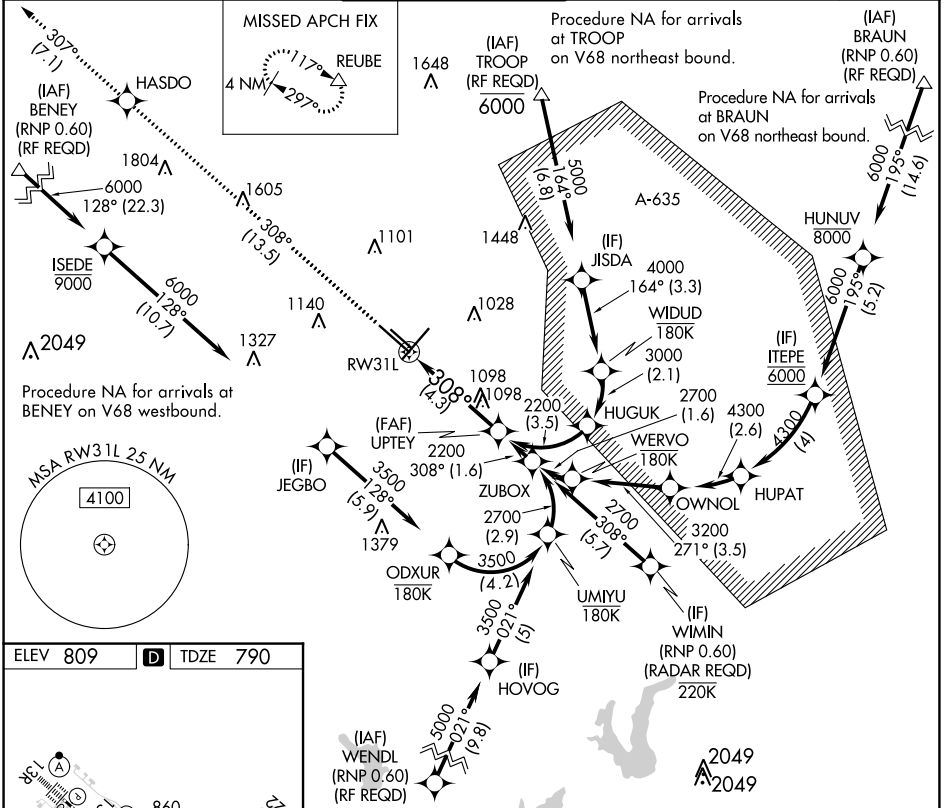
SAN ANTONIO INTL (SAT)

**▽** For uncompensated Baro-VNAV systems, procedure NA below -4°C (25°F) or above 54°C (130°F). GPS required.

**MALSR** 

**MISSED APPROACH:** Climb to 3000 on track 308° to HASDO then climb to 4200 on track 307° to REUBE and hold.

D-ATIS	SAN ANTONIO APP CON	SAN ANTONIO TOWER	GND CON	CLNC DEL	CPDLC
<b>118.9</b>	<b>125.1 307.0</b>	<b>119.8 257.8</b>	<b>121.9 348.6</b>	<b>126.7</b>	



CATEGORY	A	B	C	D
RNP 0.30 DA	1232/50		442 (500-1)	

**AUTHORIZATION REQUIRED**

SC-3, 23 MAR 2023 to 20 APR 2023

SC-3, 23 MAR 2023 to 20 APR 2023