

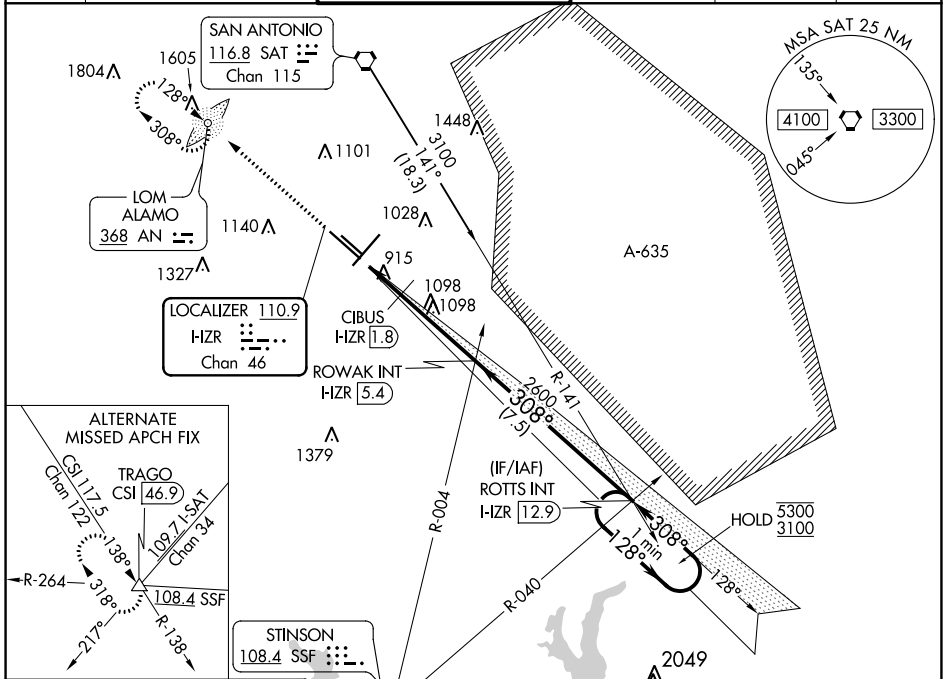
LOC/DME I-HZR <b>110.9</b> Chan <b>46</b>	APP CRS <b>308°</b>	Rwy 31L Idg <b>8502</b> TDZE <b>790</b> Apt Elev <b>809</b>	Rwy 31R Idg <b>5519</b> TDZE <b>788</b> Apt Elev <b>809</b>
---	------------------------	---	---

# ILS or LOC RWY 31L

SAN ANTONIO INTL (SAT)

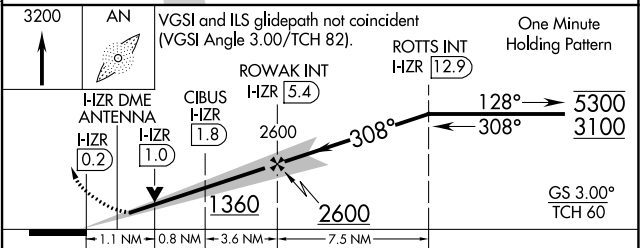
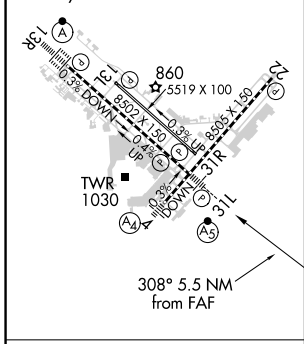
ADF required. MALSR MISSED APPROACH: Climb to 3200 direct ALAMO LOM and hold. Continue climb-in-hold to 3200.

D-ATIS <b>118.9</b>	SAN ANTONIO APP CON <b>125.1 307.0</b>	SAN ANTONIO TOWER <b>119.8 257.8</b>	GND CON <b>121.9 348.6</b>	CLNC DEL <b>126.7</b>	CPDLC
------------------------	---	---	-------------------------------	--------------------------	-------



ELEV <b>809</b>	<b>D</b> TDZE <b>790 31L</b> <b>788 31R</b>
-----------------	--

TDZ/CL Rwy 13R  
REIL Rwy 13L, 22 and 31R  
HIRL Rwy 4-22 and 13R-31L  
MIRL Rwy 13L-31R



CATEGORY	A	B	C	D
S-ILS 31L #	990/24		200 (200-½)	
S-LOC 31L	1360/24	570 (600-½)	1360-1¼	570 (600-1¼)
SIDESTEP 31R	1360-1	572 (600-1)	1360-1½	572 (600-1½)
			572 (600-1½)	572 (600-2)
<b>C</b> CIRCLING	1360-1	551 (600-1)	1420-1¾	1520-2¼
			611 (700-1¾)	711 (800-2¼)
CIBUS FIX MINIMUMS				
S-LOC 31L	1220/24	430 (500-½)	1220/40	430 (500-¾)

SC-3, 23 MAR 2023 to 20 APR 2023

SC-3, 23 MAR 2023 to 20 APR 2023