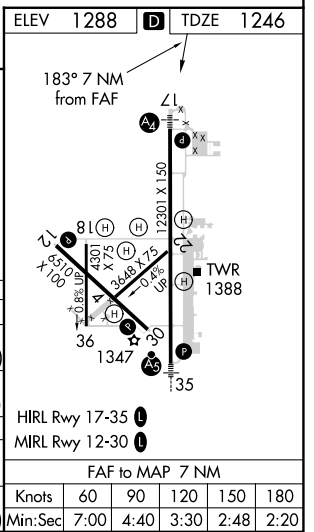
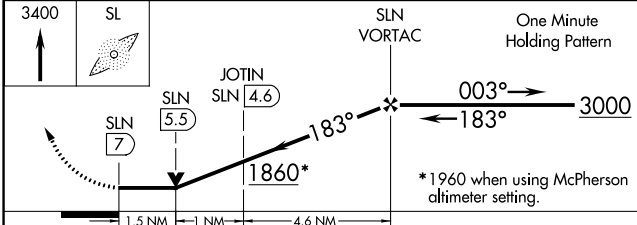
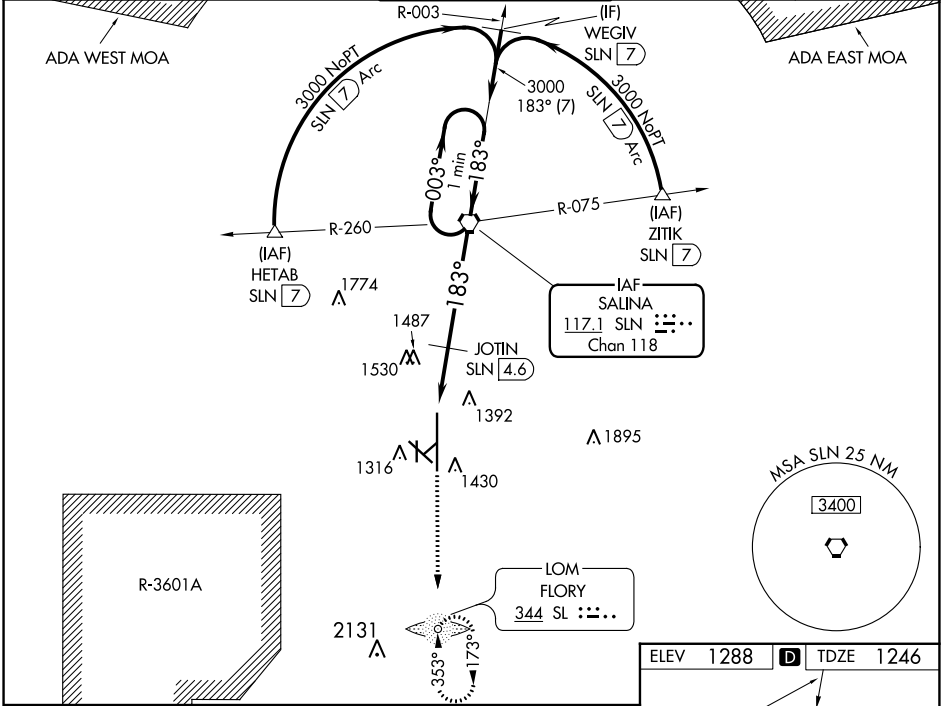


VORTAC SLN <b>117.1</b> Chan <b>118</b>	APP CRS <b>183°</b>	Rwy Idg <b>12300</b> TDZE <b>1246</b> Apt Elev <b>1288</b>
---	------------------------	--

# VOR RWY 17

SALINA RGNL (SLN)

<p><b>▽</b> Inoperative table does not apply to Cat C/D/E. <b>▲</b> Circling NA for Cat D/E southwest of Rwy 12-30. ADF required.</p>	MALS	MISSED APPROACH: Climb to 3400 direct SL LOM and hold.		
	<p>ATIS <b>120.15</b></p>	<p>KANSAS CITY CENTER <b>134.9 363.2</b></p>	<p>SALINA TOWER * <b>119.3 (CTAF) 0 257.7</b></p>	<p>GND CON <b>121.9 397.9</b></p>



CATEGORY	A	B	C	D	E
S-17	1860-¾ 614 (600-¾)		1860-1¾ 614 (600-1¾)	1860-2 614 (600-2)	1860-2½ 614 (600-2½)
CIRCLING	1860-1 572 (600-1)		1860-1¾ 572 (600-1¾)	1860-2 572 (600-2)	1920-2½ 632 (700-2½)
JOTIN FIX MINIMUMS					
S-17	1760-¾ 514 (500-¾)		1760-1½ 514 (500-1½)	1760-1¾ 514 (500-1¾)	
CIRCLING	1820-1 532 (600-1)	1840-1 552 (600-1)	1860-1½ 572 (600-1½)	1860-2 572 (600-2)	1920-2½ 632 (700-2½)

NC-2, 23 MAR 2023 to 20 APR 2023

NC-2, 23 MAR 2023 to 20 APR 2023