


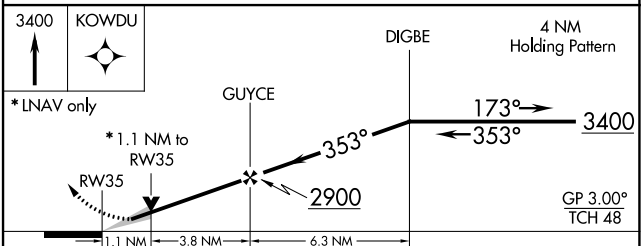
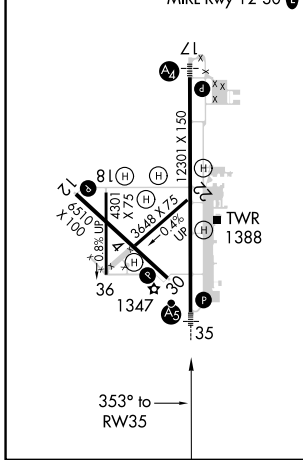
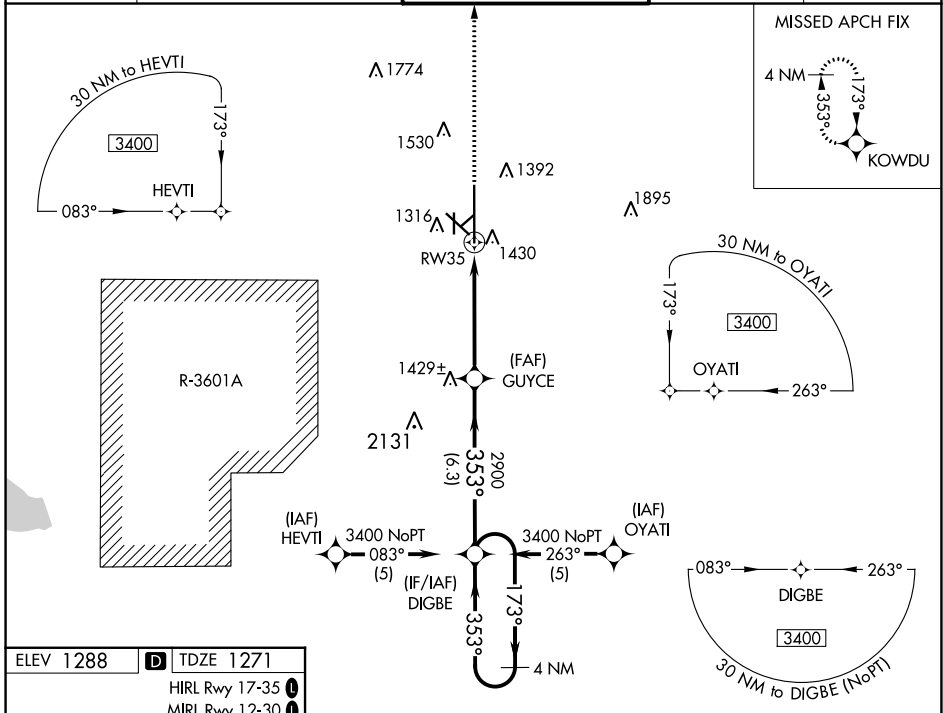
WAAS CH <b>77522</b> <b>W35A</b>	APP CRS <b>353°</b>	Rwy ldg <b>12300</b> TDZE <b>1271</b> Apt Elev <b>1288</b>
--	------------------------	--

# RNAV (GPS) RWY 35

SALINA RGNL (SLN)

<p><b>▽</b> DME/DME RNP-0.3 NA. Baro-VNAV NA below -17°C (2°F). Circling NA for Cat D southwest of Rwy 12-30. For inoperative MALSR, increase LNAV Cat D visibility to 1¼ and LPV visibility all Cats to ¾.</p>	<p>MALSR </p>	<p>MISSED APPROACH: Climb to 3400 direct KOWDU and hold.</p>
---	--	--

ATIS <b>120.15</b>	KANSAS CITY CENTER <b>134.9 363.2</b>	SALINA TOWER * <b>119.3 (CTAF) 0 257.7</b>	GND CON <b>121.9 397.9</b>	UNICOM <b>122.95</b>
-----------------------	--	---	-------------------------------	-------------------------



CATEGORY	A	B	C	D
LPV DA		1521-1/2	250 (300-1/2)	
LNAV/VNAV DA		1623-3/4	352 (400-3/4)	
LNAV MDA	1680-1/2	409 (400-1/2)	1680-3/4 409 (400-3/4)	1680-1 409 (400-1)
CIRCLING	1820-1 1/4 532 (600-1 1/4)	1840-1 1/4 552 (600-1 1/4)	1860-1 1/2 572 (600-1 1/2)	1860-2 572 (600-2)

NC-2, 23 MAR 2023 to 20 APR 2023

NC-2, 23 MAR 2023 to 20 APR 2023