

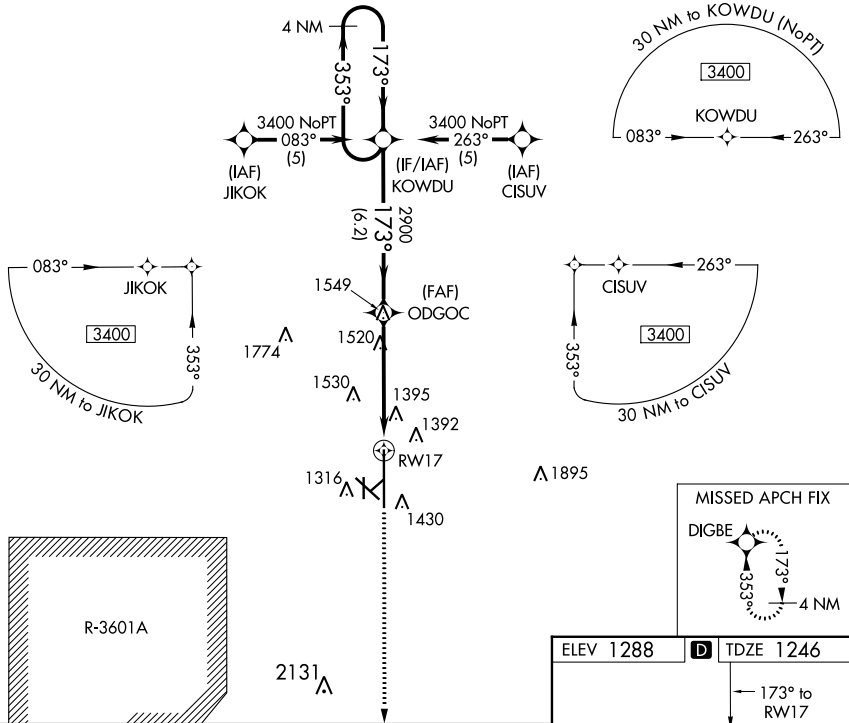
WAAS CH 70322 W17A	APP CRS 173°	Rwy ldg 12300 TDZE 1246 Apt Elev 1288
--	------------------------	--

RNAV (GPS) RWY 17

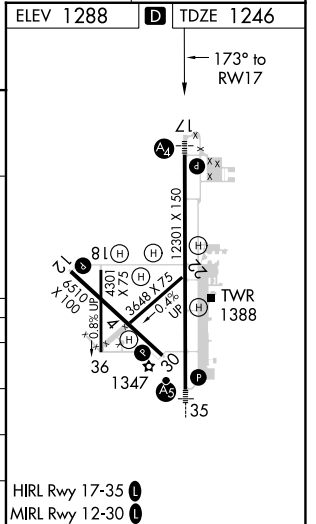
SALINA RGNL (SLN)

▽ DME/DME RNP-0.3 NA. Baro-VNAV NA below -17°C (2°F). Circling NA for Cat D southwest of Rwy 12-30. Inoperative table does not apply.	MALS 	MISSED APPROACH: Climb to 3400 direct DIGBE and hold.
--	----------	---

ATIS 120.15	KANSAS CITY CENTER 134.9 363.2	SALINA TOWER * 119.3 (CTAF) 257.7	GND CON 121.9 397.9	UNICOM 122.95
-----------------------	--	---	-------------------------------	-------------------------



4 NM Holding Pattern		KOWDU		3400 DIGBE	
3400 ← 353°		173° →		173°	
GP 3.00°		2900		RWY 17	
TCH 55		6.2 NM		5 NM	
CATEGORY	A	B	C	D	
LPV DA	1496-1		250 (300-1)		
LNAV/VNAV DA	1741-1¾		495 (500-1¾)		
LNAV MDA	1780-1	534 (500-1)	1780-1½	1780-1¾	534 (500-1¾)
CIRCLING	1820-1¾	1840-1¾	1860-1¾	1860-2	
	532 (600-1¾)	552 (600-1¾)	572 (600-1¾)	572 (600-2)	



NC-2, 23 MAR 2023 to 20 APR 2023

NC-2, 23 MAR 2023 to 20 APR 2023