

ST. LOUIS, MISSOURI

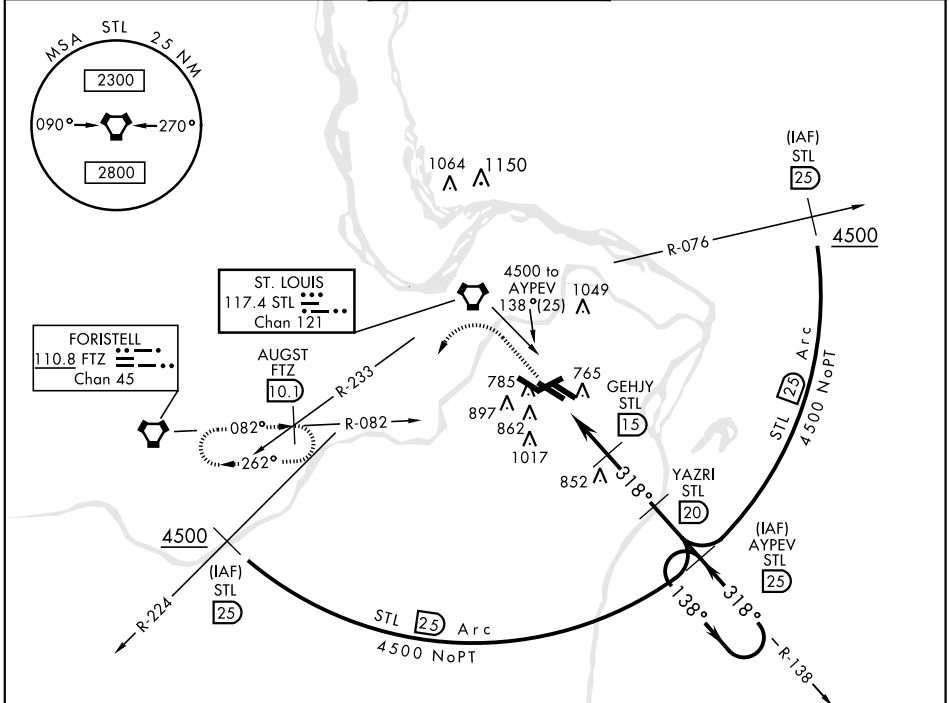
TACAN RWY 30L

VORTAC STL 117.4 Chan 121	APCH CRS 318°	Rwy ldg 10,818 TDZE 583 Arprt Elev 618
---	-------------------------	---

AL-360 [USAF]

ST. LOUIS LAMBERT INTL (KSTL)

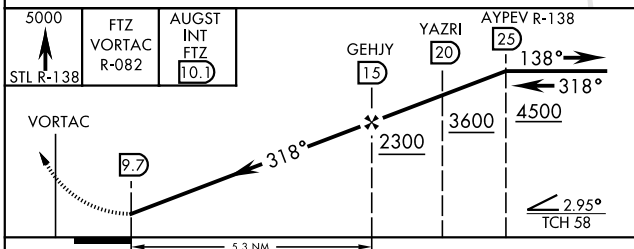
<p>NA * Inoperative table does not apply.</p>		<p>MALSR A5</p>	<p>MISSED APPROACH: Climb to 5000 via STL R-138 and FTZ VORTAC R-082 to AUGST INT/FTZ 10.1 DME and hold.</p>			
<p>ATIS 125.025 379.925</p>	<p>ST. LOUIS APP CON 121.02 338.25</p>	<p>N 120.05 S 284.6</p>	<p>ST. LOUIS TOWER W 132.475 E 239.275</p>	<p>S 118.5 W 257.7</p>	<p>GND CON 121.9 348.6 (Inbd) (Outbd) (West) 121.65 377.175 118.925 227.125</p>	<p>CLNC DEL 119.5 363.1</p>



NC-3, 23 MAR 2023 to 20 APR 2023

NC-3, 23 MAR 2023 to 20 APR 2023

EMERG SAFE ALT 100 NM 3500



ELEV 618	TDZE 583
<p>Rwy 6-24 7607 x 150 Rwy 11-29 9001 x 150 Rwy 12L-30R 9003 x 150 Rwy 12R-30L 11,019 x 200</p>	
<p>Rwy 12R ldg 10,552' Rwy 30L ldg 10,818'</p>	

CATEGORY	A	B	C	D	E
S-30L *	1100/50	517 (500-1)	1100-1½ 517(500-1½)	1100-1¾	517 (500-1¾)
CIRCLING	NOT AUTHORIZED				

ST. LOUIS, MISSOURI
Amdt 1 18200

38°45'N-90°22'W

ST. LOUIS LAMBERT INTL (KSTL)

TACAN RWY 30L