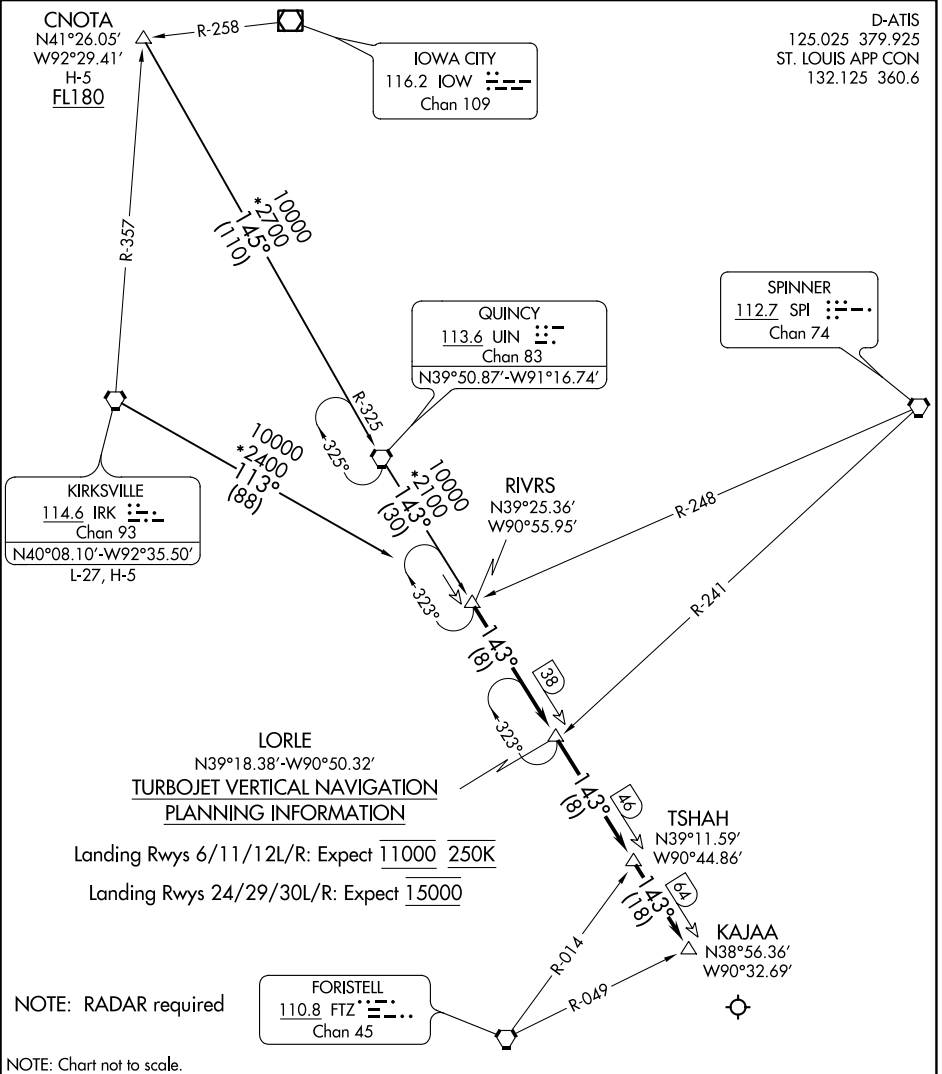


RIVRS SIX ARRIVAL

AL-360 (FAA)

ST LOUIS LAMBERT INTL (STL)
ST. LOUIS, MISSOURI



NC-3, 23 MAR 2023 to 20 APR 2023

NC-3, 23 MAR 2023 to 20 APR 2023

TURBOJET VERTICAL NAVIGATION PLANNING INFORMATION

Landing Rwy 6/11/12L/R: Expect 11000 250K

Landing Rwy 24/29/30L/R: Expect 15000

NOTE: Chart not to scale.

ARRIVAL ROUTE DESCRIPTION

- CNOTA TRANSITION (CNOTA.RIVRS6):** From over CNOTA on UIN R-325 to UIN VORTAC then on UIN R-143 to RIVRS. Thence. . . .
- KIRKSVILLE TRANSITION (IRK.RIVRS6):** From over IRK VORTAC on IRK R-113 to RIVRS. Thence. . . .
- LANDING ALL RUNWAYS:** From over RIVRS on UIN R-143 to KAJAA , thence. . . .
. . . .expect vectors to final approach course.