

# PLESS FIVE DEPARTURE

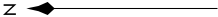
AL-360 (FAA)

ST LOUIS LAMBERT INTL (STL)  
ST. LOUIS, MISSOURI

NC-3, 23 MAR 2023 to 20 APR 2023

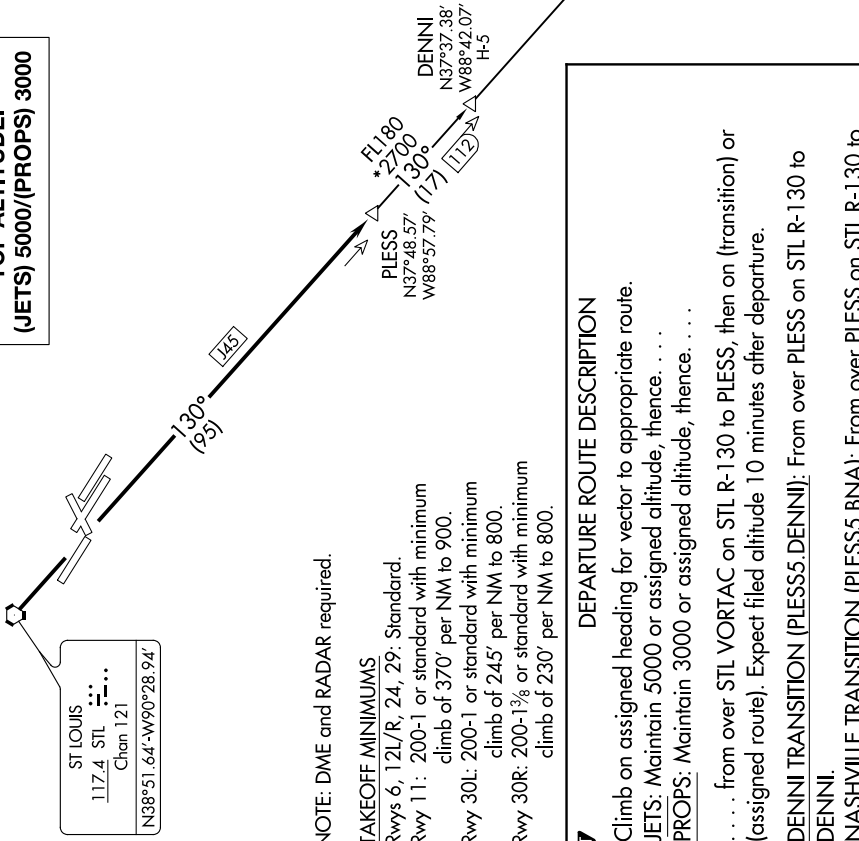
**TOP ALTITUDE:  
(JETS) 5000/(PROPS) 3000**

- D-AITS 125.025 379.925
- CJNC DEL 119.5 363.1
- CPDIC GND CON 121.9 348.6 (Inbound)
- 121.65 377.175 (Outbound)
- 118.925 227.125 (Rwy 11/29)
- ST LOUIS TOWER 120.05 284.6 (Rwys 12L/30R, 24)
- 118.5 257.7 (Rwy 12R/30L)
- 132.475 239.275 (Rwys 6, 11/29)
- ST. LOUIS DEP CON 128.1 307.05



POCKET CITY  
113.3 PKV  
Chan 80

NASHVILLE  
114.1 BNA  
Chan 88  
N36°08.22'  
W86°41.09'  
L-16, H-6-9



NOTE: DME and RADAR required.

### TAKEOFF MINIMUMS

- Rwys 6, 12L/R, 24, 29: Standard.
- Rwy 11: 200-1 or standard with minimum climb of 370' per NM to 900.
- Rwy 30L: 200-1 or standard with minimum climb of 245' per NM to 800.
- Rwy 30R: 200-1 $\frac{3}{8}$  or standard with minimum climb of 230' per NM to 800.

### DEPARTURE ROUTE DESCRIPTION

Climb on assigned heading for vector to appropriate route.  
**JETS:** Maintain 5000 or assigned altitude, thence. . . .  
**PROPS:** Maintain 3000 or assigned altitude, thence. . . .  
 . . . from over STL VORTAC on STL R-130 to PLESS, then on (transition) or (assigned route). Expect filed altitude 10 minutes after departure.  
**DENNI TRANSITION (PLESS5.DENNI):** From over PLESS on STL R-130 to DENNI.  
**NASHVILLE TRANSITION (PLESS5.BNA):** From over PLESS on STL R-130 to DENNI, then on STL R-130 and BNA R-315 to BNA VORTAC.

NOTE: Chart not to scale.

# PLESS FIVE DEPARTURE

NC-3, 23 MAR 2023 to 20 APR 2023