

LOC/DME I-JAK 110.3 Chan 40	APP CRS 064°	Rwy Idg TDZE Apt Elev	7323 551 618
--	------------------------	-----------------------------	---

ILS or LOC RWY 6

ST LOUIS LAMBERT INTL (STL)

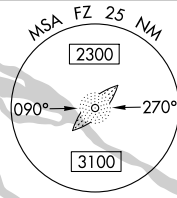
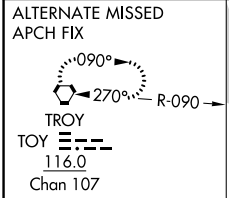
DME or RADAR required. DME or RADAR required for procedure entry.



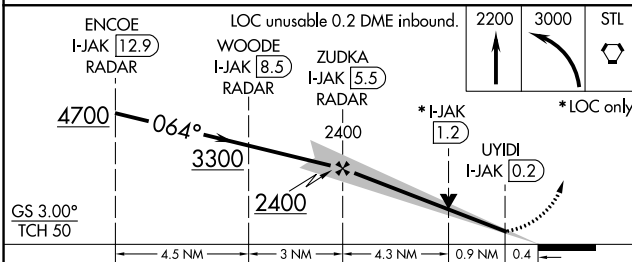
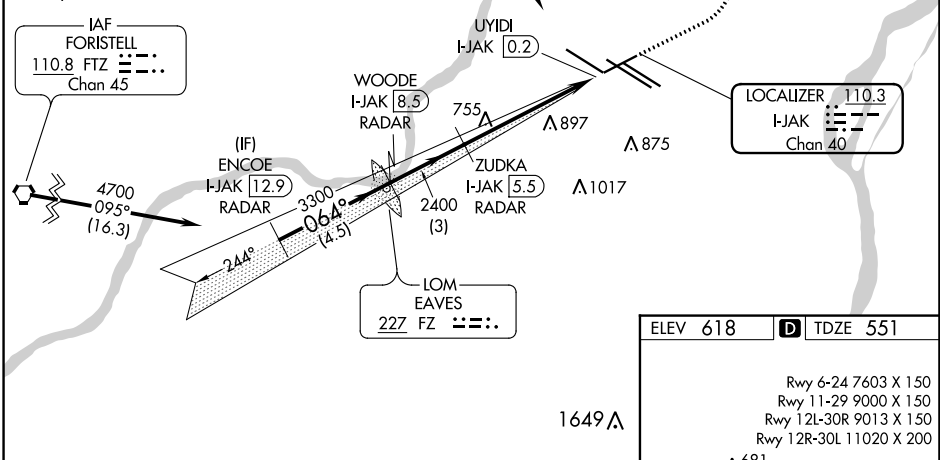
MISSED APPROACH: Climb to 2200 then climbing left turn to 3000 direct STL VORTAC and hold, continue climb-in-hold to 3000.

▼ For inop ALS, increase S-ILS 6 Cat E visibility to RVR 4000 and S-LOC 6 Cat C/D/E visibility to 1/8 SM.

D-ATIS 125.025 379.925	ST. LOUIS APP CON 132.125 360.6	ST. LOUIS TOWER 132.475 239.275	GND CON 121.9 348.6 (Inbound) 121.65 377.175 (Outbound) 118.925 227.125 (Rwy 11/29)	CLNC DEL 119.5 363.1	CPDLC
--	---	---	---	--------------------------------	-------



Procedure NA for arrival on FTZ VORTAC airway radials 082 CW 095.



ELEV 618	D TDZE 551
----------	-------------------

Rwy 6-24 7603 X 150
Rwy 11-29 9000 X 150
Rwy 12L-30R 9013 X 150
Rwy 12R-30L 11020 X 200

HIRL all Rwy's
TDZ/CL Rwy's 11, 12L, 12R, 29, and 30R
FAF to MAP 5.3 NM

Knots	60	90	120	150	180
Min:Sec	5:18	3:32	2:39	2:07	1:46

CATEGORY	A	B	C	D	E
S-ILS 6	751/24 200 (200-1/2)				
S-LOC 6	1020/24	469 (500-1/2)	1020/50		469 (500-1)

NC-3, 23 MAR 2023 to 20 APR 2023

NC-3, 23 MAR 2023 to 20 APR 2023