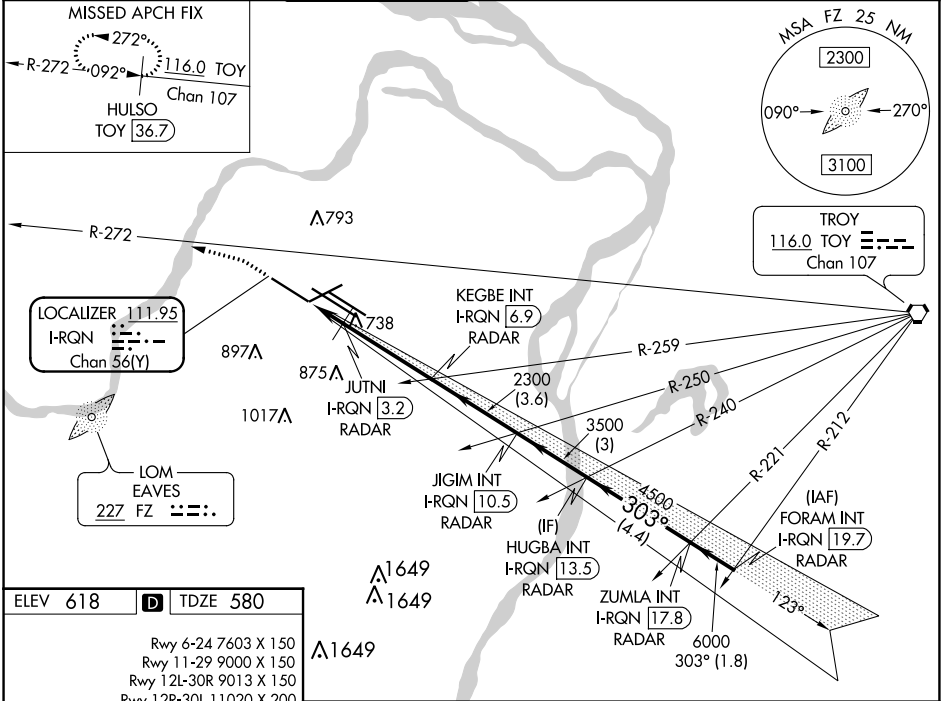


LOC/DME I-RQN 111.95 Chan 56(Y)	APP CRS 303°	Rwy ldg TDZE Apt Elev 9000 580 618
---	------------------------	--

ILS or LOC RWY 29

ST LOUIS LAMBERT INTL (STL)

RADAR required for procedure entry. DME or RADAR required.		ALSF-2 	MISSED APPROACH: Climb to 1040 then climbing left turn to 3000 on heading 286° and on TOY VORTAC R-272 to HULSO/TOY 36.7 DME and hold.		
<p>▼ Simultaneous approach authorized with Rwy 30R/L. Autopilot coupled approach NA. Rwy 29 helicopter visibility reduction below RVR 4000 NA. For inop ALS, increase S-ILS Cat E visibility to RVR 4000, increase S-LOC Cats A/B visibility to RVR 5500, and Cat C/D/E to RVR 6000.</p>					
D-ATIS 125.025 379.925	ST. LOUIS APP CON 132.125 360.6	ST. LOUIS TOWER 132.475 239.275	GND CON 121.9 348.6 (Inbound) 121.65 377.175 (Outbound) 118.925 227.125 (Rwy 11/29)		CLNC DEL 119.5 363.1



ELEV 618	D	TDZE 580
Rwy 6-24 7603 X 150 Rwy 11-29 9000 X 150 Rwy 12L-30R 9013 X 150 Rwy 12R-30L 11020 X 200		
HIRL all Rwy's		
TDZ/CL Rwy's 11, 12L, 12R, 29, and 30R		
FAF to MAP 5.2 NM		
Knots	60	90 120 150 180
Min:Sec	5:12	3:28 2:36 2:05 1:44

1040	3000	TOY R-272	HULSO TOY 36.7	VGSI and ILS glidepath not coincident (VGSI Angle 3.00/ TCH 73).		
Disregard OM indications.				HUGBA INT I-RQN [13.5] RADAR	ZUMLA INT I-RQN [17.8] RADAR	FORAM INT I-RQN [19.7] RADAR
* LOC only				JIGIM INT I-RQN [10.5] RADAR		
				JUTNI I-RQN [3.2] RADAR	KEGBE INT I-RQN [6.9] RADAR	
				I-RQN [1.7] RADAR	2300	3500 4500 6000
				1100*	2300	GS 3.00° TCH 56
1.5 NM		3.7 NM		3.6 NM		3 NM
CATEGORY	A	B	C	D	E	
S-ILS 29	780/18		200 (200-½)			
S-LOC 29	980/40		400 (400-¾)			

NC-3, 23 MAR 2023 to 20 APR 2023

NC-3, 23 MAR 2023 to 20 APR 2023