

LOC/DME I-OGZ <b>111.95</b> Chan 56(Y)	APP CRS <b>123°</b>	Rwy ldg TDZE Apt Elev	<b>9000</b> <b>618</b> <b>618</b>
--	------------------------	-----------------------------	---

# ILS or LOC RWY 11

ST LOUIS LAMBERT INTL (STL)

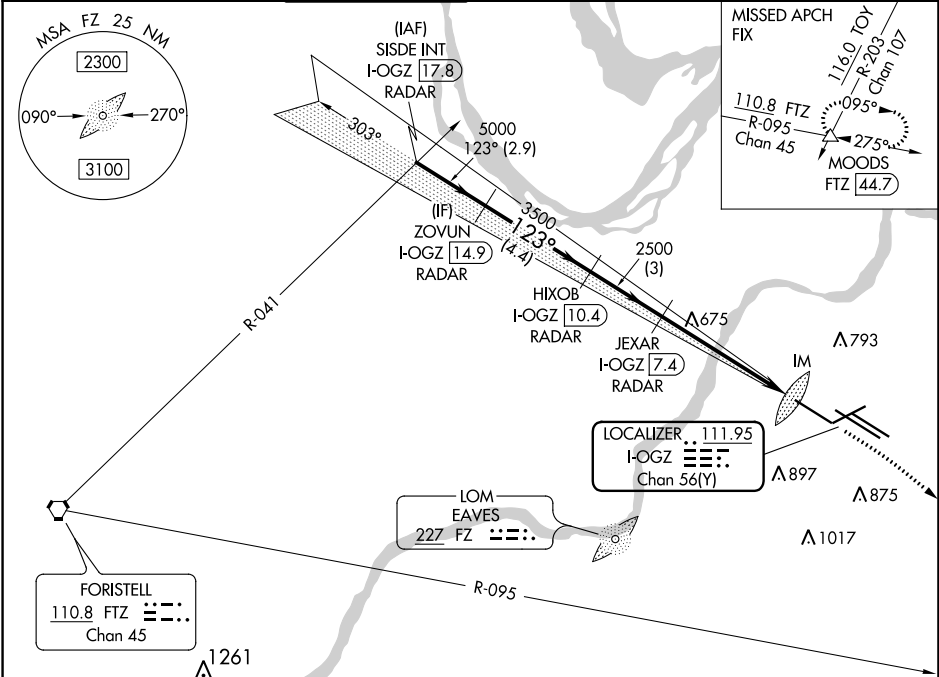
**RADAR** required for procedure entry. DME or RADAR required.

Simultaneous approach authorized with Rwy 12R/L. Disregard OM signal associated with ILS to Rwy 12R. For inop ALS, increase S-ILS Cat E visibility to RVR 4000, and S-LOC Cat C/D/E visibility to RVR 5500.



MISSED APPROACH: Climb to 1060 then climbing right turn to 3000 on heading 130° and FTZ R-095 to MOODS INT/FTZ 44.7 DME and hold.

D-ATIS <b>125.025</b> <b>379.925</b>	ST. LOUIS APP CON <b>132.125 360.6</b>	ST. LOUIS TOWER <b>132.475 239.275</b>	GND CON <b>121.9 348.6</b> (Inbound) <b>121.65 377.175</b> (Outbound) <b>118.925 227.125</b> (Rwy 11/29)	CLNC DEL <b>119.5 363.1</b>	CPDLC
--	---	---	---	--------------------------------	-------



NC-3, 23 MAR 2023 to 20 APR 2023

NC-3, 23 MAR 2023 to 20 APR 2023

VGSi and ILS glidepath not coincident (VGSi Angle 3.00/TCH 67).		1060	3000	FTZ R-095	MOODS
SISDE INT I-OGZ 17.8 RADAR		ZOVUN I-OGZ 14.9 RADAR		HIXOB I-OGZ 10.4 RADAR	JEXAR I-OGZ 7.4 RADAR
5000		3500		2500	1060
GS 3.00° TCH 55		5000		2500	1060
2.9 NM		4.4 NM		3 NM	4.6 NM
CATEGORY		A		B	C
S-ILS 11		818/18		200 (200-1/2)	
S-LOC 11		980/24		362 (400-1/2)	980/35 362 (400-5/8)

ELEV 618 TDZE 618

Rwy 6-24 7603 X 150  
Rwy 11-29 9000 X 150  
Rwy 12L-30R 9013 X 150  
Rwy 12R-30L 11020 X 200

HIRL all Rwy  
TDZ/CL Rwy 11, 12L, 12R, 29, and 30R  
FAF to MAP 5.6 NM

Knots	60	90	120	150	180
Min:Sec	5:36	3:44	2:48	2:14	1:52