

LOC/DME I-LDZ <b>108.9</b> Chan 26	APP CRS <b>123°</b>	Rwy Idg TDZE Apt Elev	<b>8956</b> <b>541</b> <b>618</b>
--	------------------------	--------------------------	---

# ILS RWY 12L (CAT II & III)

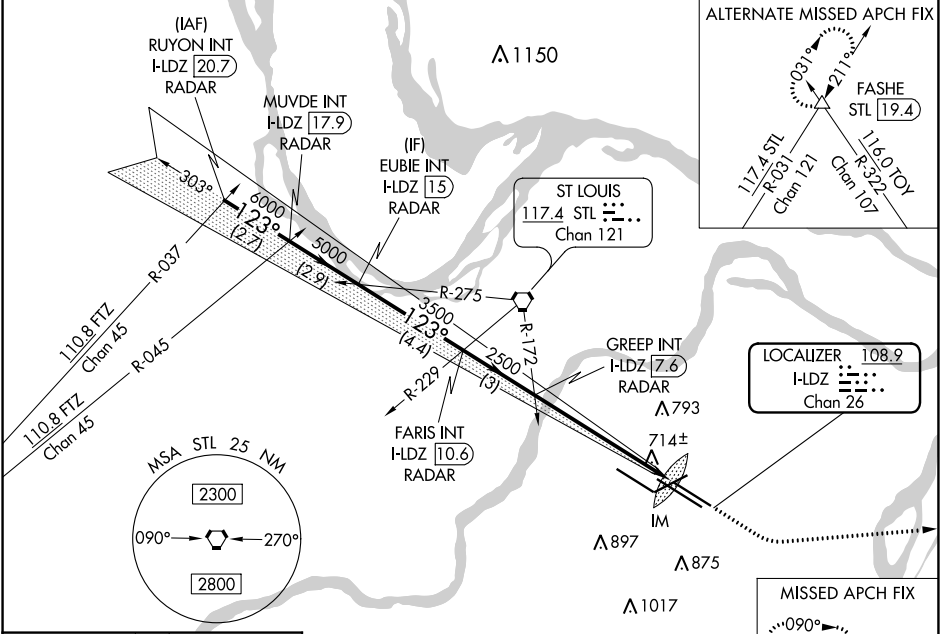
ST LOUIS LAMBERT INTL (STL)

Disregard OM indications.  
Simultaneous approach authorized with Rwy 11.

ALSIF-2

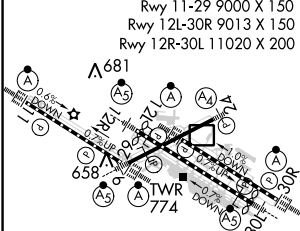
MISSED APPROACH: Climb to 2500 then climbing left turn to 3000 direct TOY VORTAC and hold.

D-ATIS <b>125.025</b> <b>379.925</b>	ST. LOUIS APP CON <b>132.125 360.6</b>	ST. LOUIS TOWER <b>120.05 284.6</b>	GND CON <b>121.9 348.6</b> (Inbound) <b>121.65 377.175</b> (Outbound) <b>118.925 227.125</b> (Rwy 11/29)	CLNC DEL <b>119.5 363.1</b>	CPDLC
--	---	--	---	--------------------------------	-------

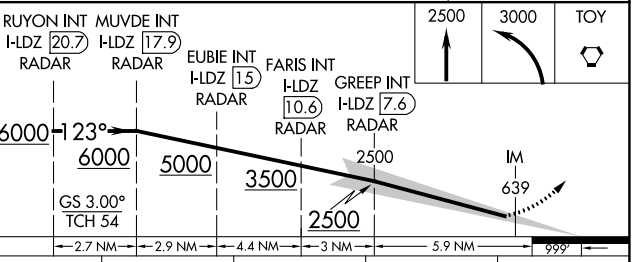


ELEV 618	D	TDZE 541
----------	---	----------

Rwy 6-24 7603 X 150  
Rwy 11-29 9000 X 150  
Rwy 12L-30R 9013 X 150  
Rwy 12R-30L 11020 X 200



## RADAR and DME REQUIRED



CATEGORY	A	B	C	D
S-ILS 12L	CAT II RA 112/12 100 DA 641			
S-ILS 12L	CAT III RVR 06			

## CATEGORY II & III ILS - SPECIAL AIRCREW & AIRCRAFT CERTIFICATION REQUIRED

NC-3, 23 MAR 2023 to 20 APR 2023

NC-3, 23 MAR 2023 to 20 APR 2023