

LOC/DME I-OGZ <b>111.95</b> Chan 56(Y)	APP CRS <b>123°</b>	Rwy ldg TDZE Apt Elev <b>9000</b> <b>618</b> <b>618</b>
--	------------------------	--

# ILS RWY 11 (CAT II & III)

## ST LOUIS LAMBERT INTL (STL)

**RADAR required for procedure entry. DME or RADAR required.**

Simultaneous approach authorized with Rwy 12R/L.  
Disregard OM signal associated with ILS to Rwy 12R.



MISSED APPROACH: Climb to 1060 then climbing right turn to 3000 on heading 130° and FTZ R-095 to MOODS INT/FTZ 44.7 DME and hold.

D-ATIS  
**125.025**  
**379.925**

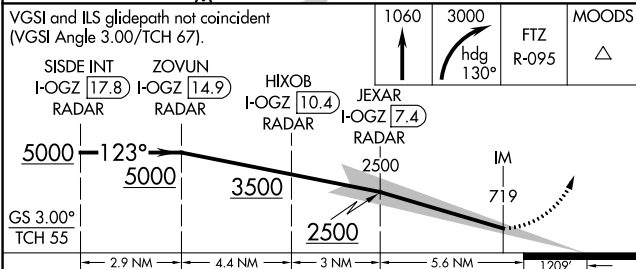
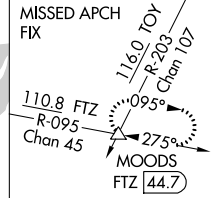
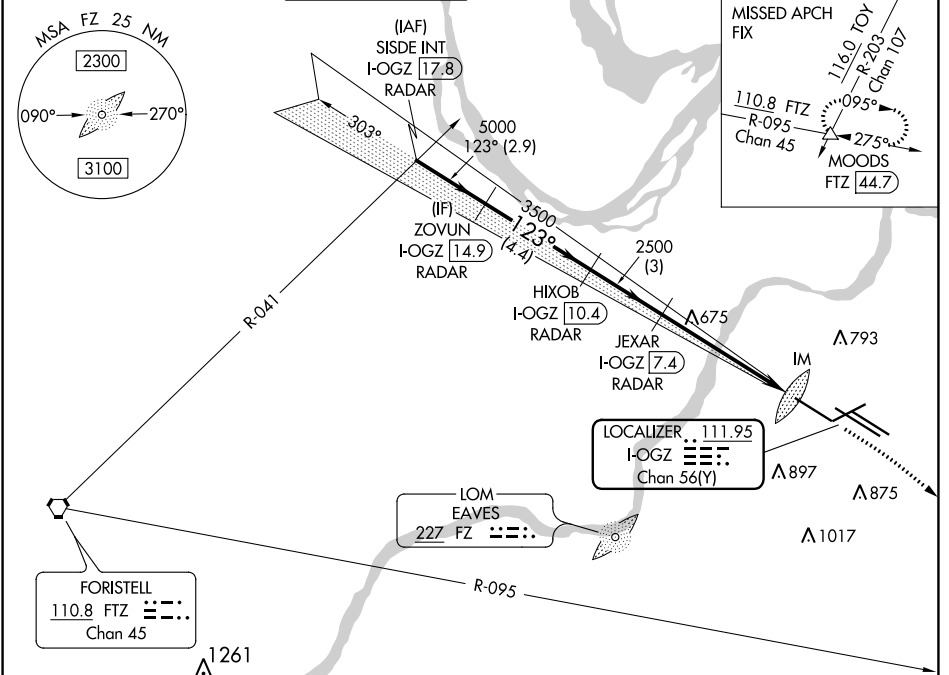
ST. LOUIS APP CON  
**132.125 360.6**

ST. LOUIS TOWER  
**132.475 239.275**

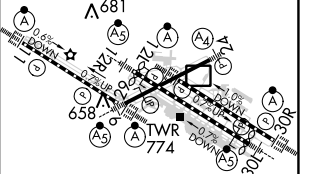
GND CON  
**121.9 348.6** (Inbound)  
**121.65 377.175** (Outbound)  
**118.925 227.125** (Rwy 11/29)

CLNC DEL  
**119.5 363.1**

CPDLC



VGSI and ILS glidepath not coincident (VGSI Angle 3.00/TCH 67).	1060	3000	FTZ R-095	MOODS	ELEV 618	TDZE 618
SISDE INT I-OGZ 17.8 RADAR	ZOVUN I-OGZ 14.9 RADAR	HIXOB I-OGZ 10.4 RADAR	JEXAR I-OGZ 7.4 RADAR	IM	Rwy 6-24 7603 X 150	Rwy 11-29 9000 X 150
					Rwy 12L-30R 9013 X 150	Rwy 12R-30L 11020 X 200



CATEGORY	A	B	C	D
S-ILS 11	CAT II RA 187/12 100 DA 718			
S-ILS 11	CAT III RVR 06			

### CATEGORY II & III ILS - SPECIAL AIRCREW & AIRCRAFT CERTIFICATION REQUIRED

HIRL all Rwys  
TDZ/CL Rws 11, 12L, 12R, 29, and 30R

NC-3, 23 MAR 2023 to 20 APR 2023

NC-3, 23 MAR 2023 to 20 APR 2023