

# GATEWAY ONE DEPARTURE

AL-360 (FAA)

ST LOUIS LAMBERT INTL (STL)

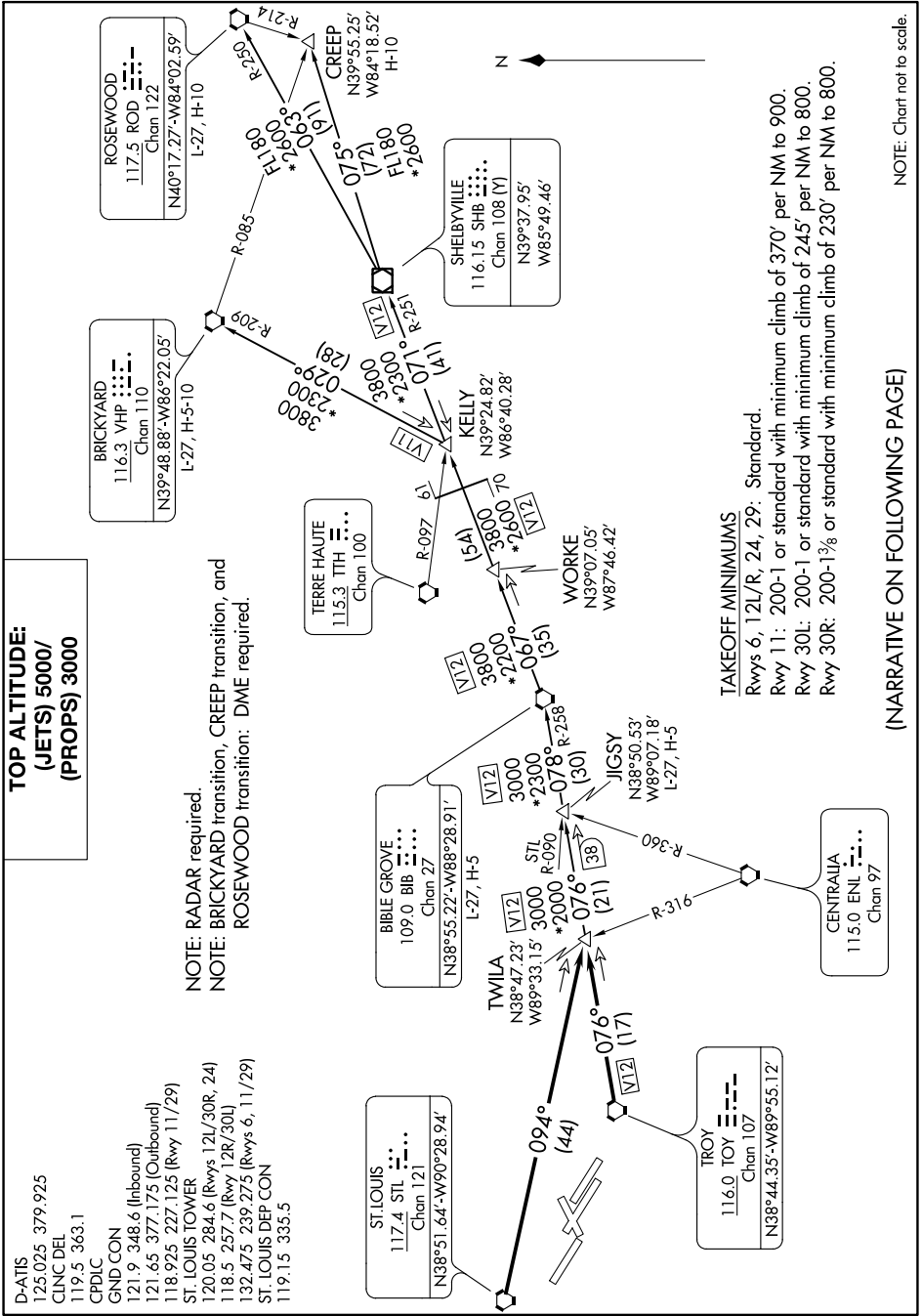
ST. LOUIS, MISSOURI

NC-3, 23 MAR 2023 to 20 APR 2023

**TOP ALTITUDE:**  
**(JETS) 5000/  
(PROPS) 3000**

- D-ATIS 125.025 379.925
- CLNC DEL 119.5 363.1
- CPDIC
- GND CON 121.9 348.6 (Inbound)
- 121.65 377.175 (Outbound)
- 118.925 227.125 (Rwy 11/29)
- ST. LOUIS TOWER 120.05 284.6 (Rwys 12L/30R, 24)
- 118.5 257.7 (Rwy 12R/30L)
- 132.475 239.275 (Rwys 6, 11/29)
- ST. LOUIS DEP CON 119.15 335.5

NOTE: RADAR required.  
NOTE: BRICKYARD transition, CREEP transition, and ROSEWOOD transition: DME required.



TAKEOFF MINIMUMS  
Rwys 6, 12L/R, 24, 29: Standard.  
Rwy 11: 200-1 or standard with minimum climb of 370' per NM to 900.  
Rwy 30L: 200-1 or standard with minimum climb of 245' per NM to 800.  
Rwy 30R: 200-1 3/4 or standard with minimum climb of 230' per NM to 800.

(NARRATIVE ON FOLLOWING PAGE)

NOTE: Chart not to scale.

NC-3, 23 MAR 2023 to 20 APR 2023