

(BERYY5.BERYY) 18312

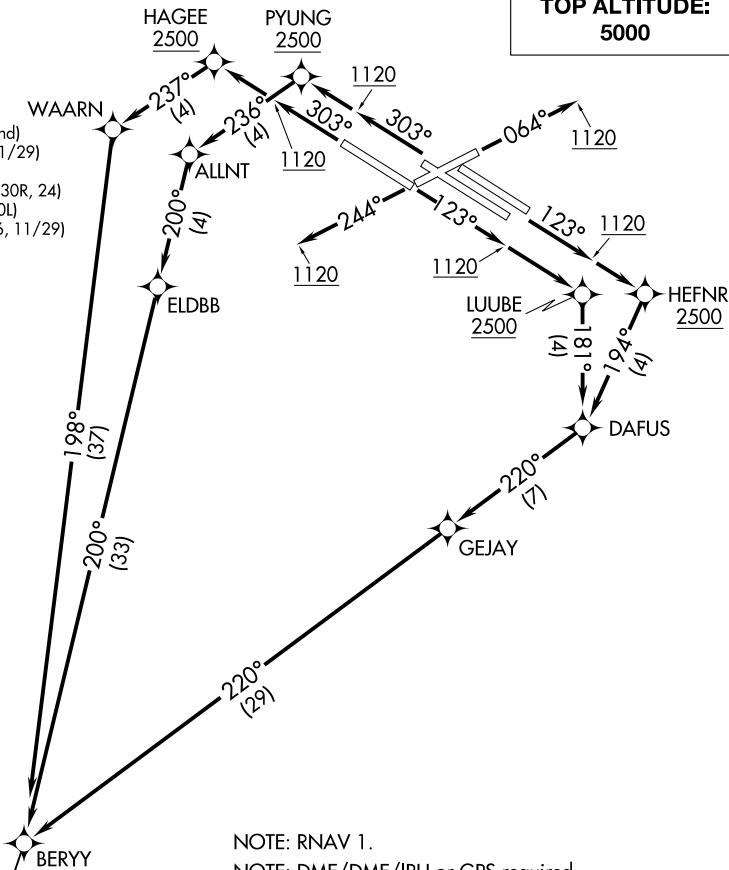
BERYY FIVE DEPARTURE (RNAV)

ST LOUIS LAMBERT INTL (STL)
ST. LOUIS, MISSOURI

AL-360 (FAA)

**TOP ALTITUDE:
5000**

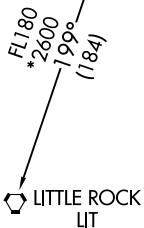
D-ATIS
125.025 379.925
CLNC DEL
119.5 363.1
CPDLC
GND CON
121.9 348.6 (Inbound)
121.65 377.175 (Outbound)
118.925 227.125 (Rwy 11/29)
ST. LOUIS TOWER
120.05 284.6 (Rwys 12L/30R, 24)
118.5 257.7 (Rwy 12R/30L)
132.475 239.275 (Rwys 6, 11/29)
ST. LOUIS DEP CON
128.1 307.05



NOTE: RNAV 1.
NOTE: DME/DME/IRU or GPS required.
NOTE: RADAR required.
NOTE: For use by turbojet aircraft only.

TAKEOFF MINIMUMS

Rwys 6, 24: Standard with minimum climb of 500' per NM to 1120 then minimum climb of 280' per NM to 5000.
Rwy 11: Standard with minimum climb of 500' per NM to LUUBE.
Rwys 12L/R: Standard with minimum climb of 500' per NM to HEFN.
Rwy 29: Standard with minimum climb of 500' per NM to HAGEE.
Rwys 30L/R: Standard with minimum climb of 500' per NM to PYUNG.



(NARRATIVE ON FOLLOWING PAGE)

NOTE: Chart not to scale.

BERYY FIVE DEPARTURE (RNAV)

(BERYY5.BERYY) 19JUL18

ST. LOUIS, MISSOURI
ST LOUIS LAMBERT INTL (STL)

NC-3, 23 MAR 2023 to 20 APR 2023

NC-3, 23 MAR 2023 to 20 APR 2023