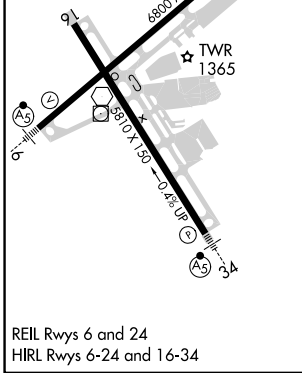
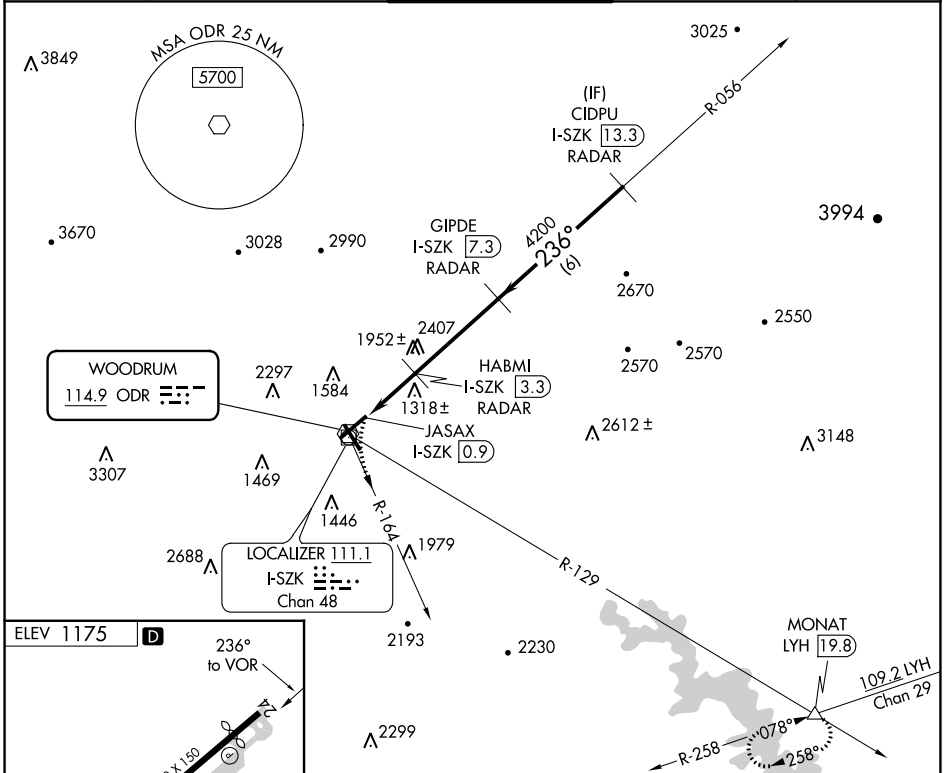


VOR ODR 114.9	APP CRS 236°	Rwy ldg TDZE Apt Elev N/A 1175
-------------------------	------------------------	---

VOR/DME-A

ROANOKE/BLACKSBURG RGNL (WOODRUM FLD) (R.O.A)

RADAR required.		MISSED APPROACH: Climbing left turn to 4000 on ODR VOR R-164 and LYH VOR/DME R-258 to MONAT/LYH 19.8 DME and hold.				
<p>Circling NA northwest of Rwy 6-24. DME from I-SZK LDA. Simultaneous reception of ODR VOR and I-SZK DME required.</p> <p> -13°C</p>		ATIS 132.375	ROANOKE APP CON 126.9 339.8	ROANOKE TOWER 118.3 257.8	GND CON 121.9 257.8	CLNC DEL 119.7



ELEV 1175	236° to VOR	MONAT	GIPDE I-SZK (7.3) RADAR	CIDPU I-SZK (13.3) RADAR
4000 ODR R-164	LYH R-258	MONAT	HABMI I-SZK (3.3) RADAR	
			JASAX I-SZK (0.9)	
			2720	236° 4200
			4200	4200
			5.69° TCH 30	
			2.4 NM	4 NM
			6 NM	
CATEGORY	A	B	C	D
CIRCLING	1740-1	565 (600-1)	2420-3 1245 (1300-3)	2800-3 1625 (1700-3)

VOR/DME-A

NE-3, 23 MAR 2023 to 20 APR 2023

NE-3, 23 MAR 2023 to 20 APR 2023