

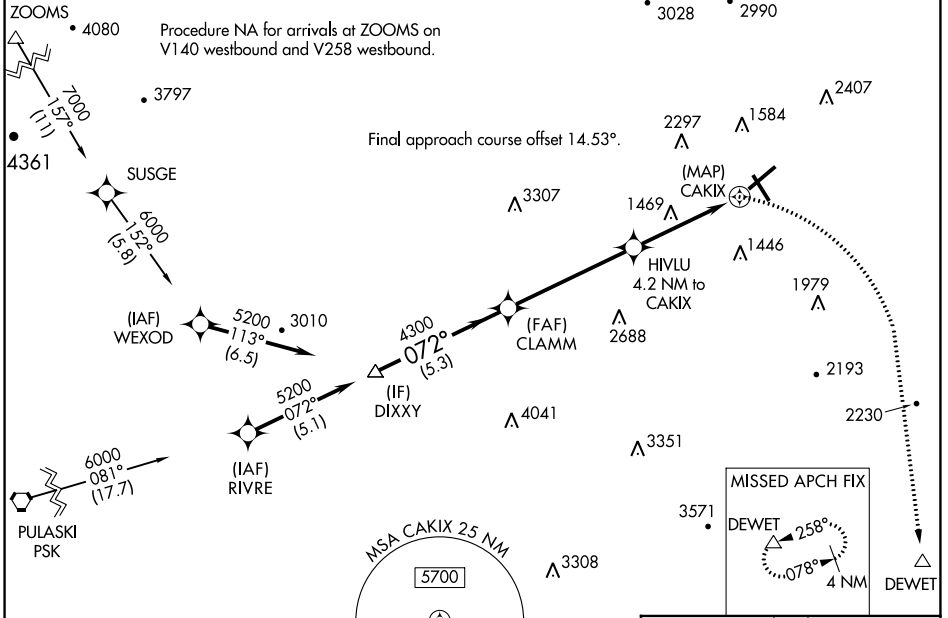
APP CRS	Rwy Idg	<b>6800</b>
<b>072°</b>	TDZE	<b>1175</b>
	Apt Elev	<b>1175</b>

# RNAV (GPS) Y RWY 6

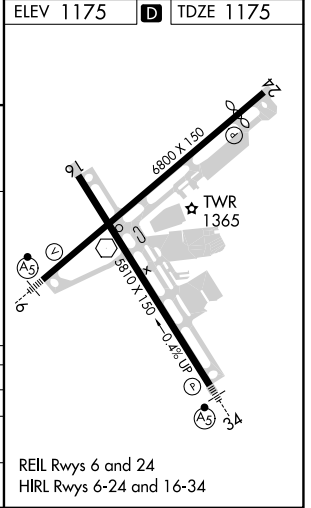
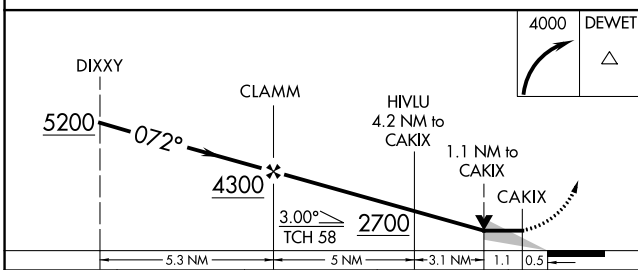
ROANOKE/BLACKSBURG RGNL (WOODRUM FLD) (R.O.A)

RNP APCH.	MALSR	MISSED APPROACH: Climbing right turn to 4000 direct DEWET and hold. ** Missed approach requires minimum climb of 276 feet per NM to 2700.
<p>Circling NA northwest of Rwy 6-24. For inop ALS, increase LNAV** Cat A and B visibility to 1 SM, LNAV Cat A visibility to 1 SM, and LNAV Cat C and D visibility to 1 1/2 SM.</p> <p>-13°C</p>		

ATIS	ROANOKE APP CON	ROANOKE TOWER	GND CON	CLNC DEL
<b>132.375</b>	<b>126.9 339.8</b>	<b>118.3 257.8</b>	<b>121.9 257.8</b>	<b>119.7</b>



ELEV 1175	<b>D</b>	TDZE 1175
-----------	----------	-----------



CATEGORY	A	B	C	D
LNAV MDA**	1720-3/4	545 (600-3/4)	1720-1 1/8	545 (600-1 1/8)
LNAV MDA	1980-3/4	805 (900-3/4)	1980-1 7/8	805 (900-1 7/8)
<b>C</b> CIRCLING	1980-1 805 (900-1)	1980-1 1/4 805 (900-1 1/4)	2420-3 1245 (1300-3)	2820-3 1645 (1700-3)

REIL Rwy 6 and 24  
HIRL Rwy 6-24 and 16-34

NE-3, 23 MAR 2023 to 20 APR 2023

NE-3, 23 MAR 2023 to 20 APR 2023