

# TARVR ONE ARRIVAL (RNAV)

AL-346 (FAA)

RENO/TAHOE INTL (RNO)  
RENO, NEVADA

SW-4, 23 MAR 2023 to 20 APR 2023

NORCAL APP CON  
119.2 279.55  
D-AITS  
135.8 363.0  
RENO TOWER  
118.7 257.8

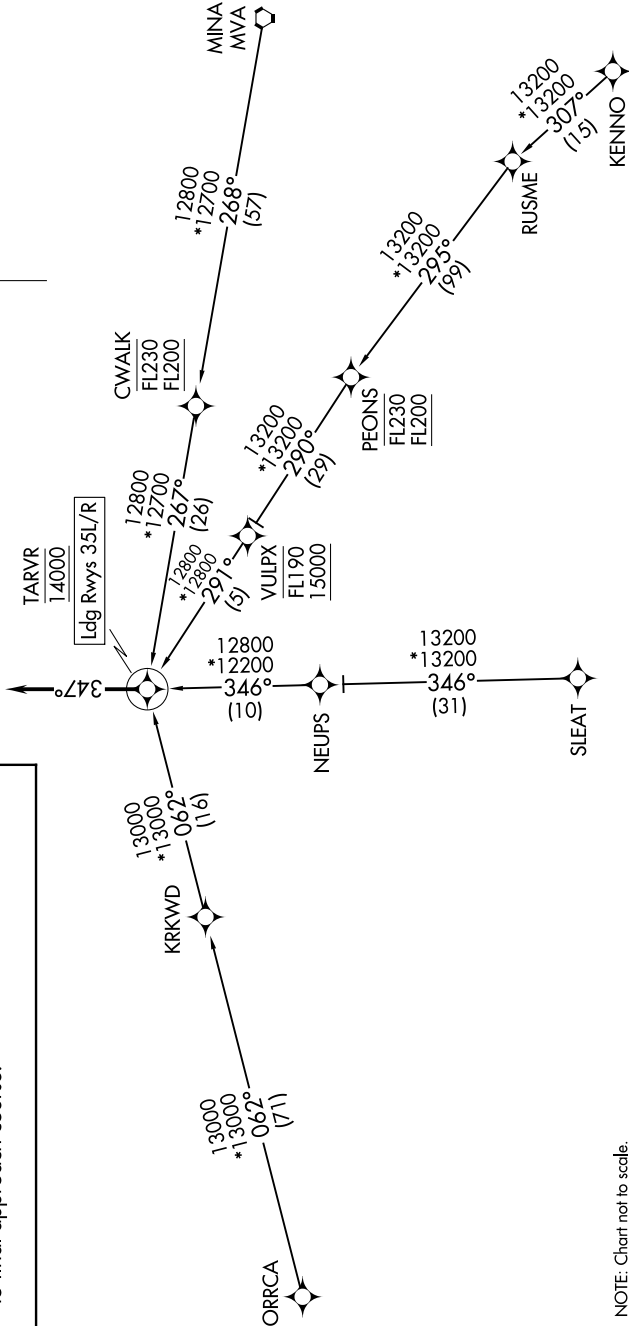
RNAV 1 - GPS
RADAR required



## ARRIVAL ROUTE DESCRIPTION

- KENNO TRANSITION (KENNO.TARVR1)
- MINA TRANSITION (MVA.TARVR1)
- ORRCA TRANSITION (ORRCA.TARVR1)
- SLEAT TRANSITION (SLEAT.TARVR1)

From TARVR, then on heading 347°, expect assigned instrument approach for Rwys 35L/R or RADAR vectors to final approach course.



# TARVR ONE ARRIVAL (RNAV)

RENO, NEVADA  
RENO/TAHOE INTL (RNO)

NOTE: Chart not to scale.

SW-4, 23 MAR 2023 to 20 APR 2023