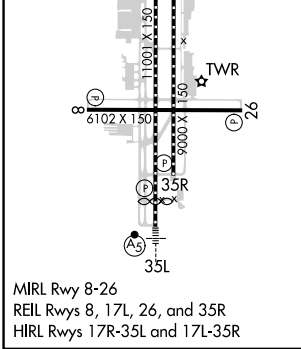
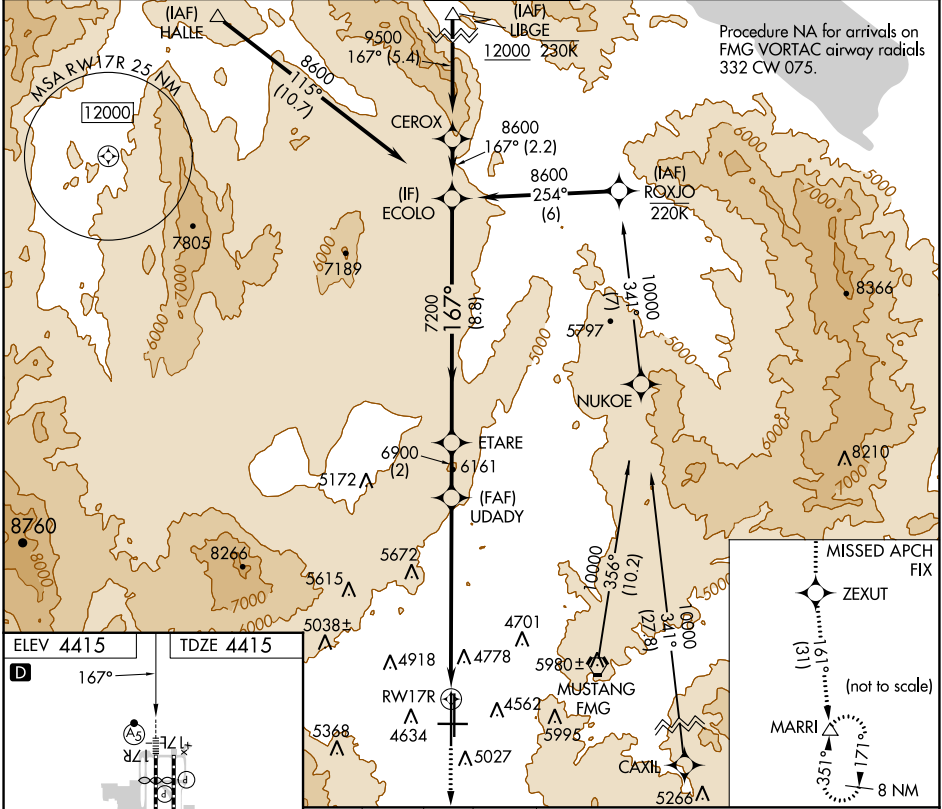


WAAS CH 78309 W17B	APP CRS 167°	Rwy Idg TDZE 4415 Apt Elev 4415	10001
--	------------------------	---	--------------

RNAV (GPS) X RWY 17R

RENO/TAHOE INTL (RNO)

RNP APCH - GPS.			MALSR		MISSED APPROACH: Climb to 13000 direct ZEXUT and on track 161° to MARRI and hold.		
<p>For inop ALS, increase LPV all Cats visibility to 2 1/2 SM. Inop table does not apply to LNAV all Cats.</p>							
D-ATIS 135.8 363.0	NORCAL APP CON 119.2 279.55 126.3 353.9		RENO TOWER 118.7 257.8		GND CON 121.9 348.6	CLNC DEL 124.9 370.85	CPDLC



13000	ZEXUT	MARRI	VGSI and RNAV glidepath not coincident (VGSI Angle 3.06/TCH 77).		ECOLO
↑	◆	△	UDADY	ETARE	8600
		tr 161°	5.2 NM to RWY17R	6900	7200
			RWY17R	6900	8600
			5.2 NM	2.1 NM	2 NM
				8.8 NM	
					GP 3.16° TCH 59

CATEGORY	A	B	C	D
LPV DA	5239-1 7/8 824 (900-1%)			
LNAV MDA	6200/40 1785 (1800-3/4)	6200/55 1785 (1800-1)	6200-3	1785 (1800-3)

SW-4, 23 MAR 2023 to 20 APR 2023

SW-4, 23 MAR 2023 to 20 APR 2023