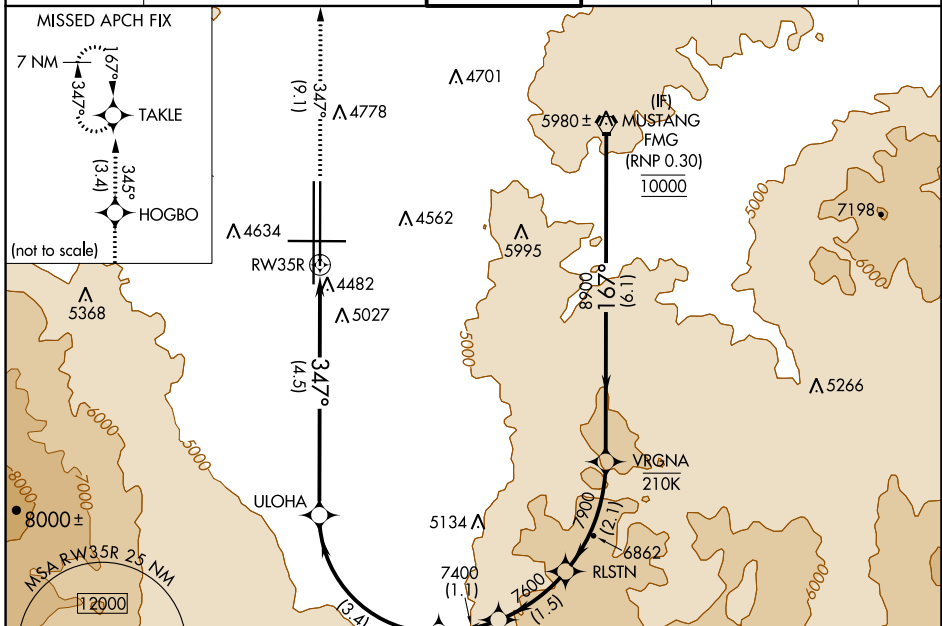


APP CRS <b>347°</b>	Rwy Idg TDZE Apt Elev	<b>9000</b> <b>4408</b> <b>4415</b>
------------------------	-----------------------------	---

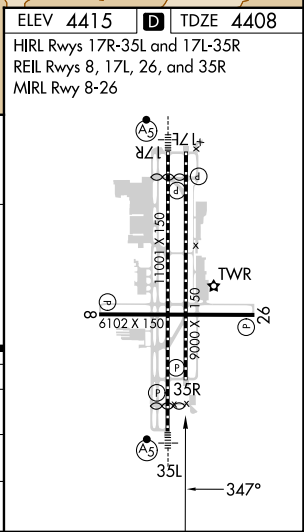
# RNAV (RNP) W RWY 35R

RENO/TAHOE INTL (RNO)

RNP AR APCH - GPS.		MISSED APPROACH: Climb to 11000 on track 347° to HOGBO and on track 345° to TAKLE and hold, continue climb-in-hold to 11000. *Missed approach requires minimum climb of 301 feet per NM to 7150.					
<p><b>▽</b> For uncompensated Baro-VNAV systems, procedure NA below -9°C or above 34°C.</p>		D-ATIS <b>135.8 363.0</b>	NORCAL APP CON <b>119.2 279.55 126.3 353.9</b>	RENO TOWER <b>118.7 257.8</b>	GND CON <b>121.9 348.6</b>	CLNC DEL <b>124.9 370.85</b>	CPDLC



ELEV 4415	<b>D</b> TDZE 4408					
HIRL Rwys 17R-35L and 17L-35R						
REIL Rwys 8, 17L, 26, and 35R						
MIRL Rwy 8-26						
FMG VORTAC	VRGNA	RLSTN	URKBE	11000	HOGBO	TAKLE
10000	8900	7900	7600	7400	6156	
GP 3.50°						
TCH 75						
6.1 NM	2.1 NM	1.5 NM	1.1 NM	3.4 NM	4.5 NM	
A	B	C	D			



CATEGORY	A	B	C	D
RNP 0.11 DA*	4762-1 354 (400-1)			
RNP 0.30 DA	5349-2½ 941 (1000-2½)			
<b>AUTHORIZATION REQUIRED</b>				

SW-4, 23 MAR 2023 to 20 APR 2023

SW-4, 23 MAR 2023 to 20 APR 2023