

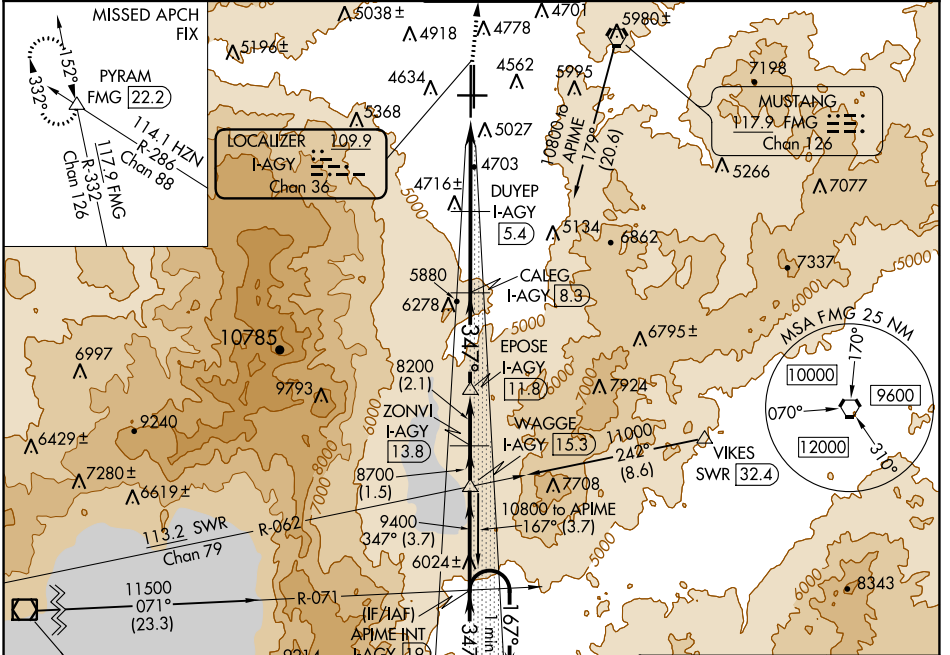
LOC/DME I-AGY 109.9 Chan 36	APP CRS 347°	Rwy Idg 10011 TDZE 4410 Apt Elev 4415
---	------------------------	--

ILS or LOC RWY 35L

RENO/TAHOE INTL (RNO)

DME required.	MALS/R	MISSED APPROACH: Climb to 11000 on heading 350° and on FMG VORTAC R-332 to PYRAM INT/FMG 22.2 DME and hold, continue climb-in-hold to 11000.
⚠ Circling Rwy 8 NA at night. Inop table does not apply.		

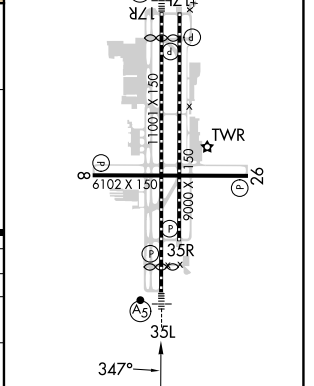
D-ATIS 135.8 363.0	NORCAL APP CON 119.2 279.55 126.3 353.9	RENO TOWER 118.7 257.8	GND CON 121.9 348.6	CLNC DEL 124.9 370.85	CPDLC
------------------------------	---	----------------------------------	-------------------------------	---------------------------------	-------



APIME INT One Minute Holding Pattern 14000 ← 167° 10800 → 347°	WAGGE I-AGY 15.3 8200	ZONVI I-AGY 13.8 8700	EPOSE I-AGY 11.8 8200	CALEG I-AGY 8.3 6278	DUYEP I-AGY 5.4 5134	FMG R-332 11000	PYRAM 10800
GS 3.54° TCH 51	10500	9400	8700	8200	6860	5800	
VGS1 and ILS glidepath not coincident (VGS1 Angle 3.54/TCH 72).							
← 3.7 NM → 1.5 NM 2.1 NM 3.5 NM 2.9 NM 1.9 NM 1.7 NM →							

ELEV 4415	TDZE 4410
HIRL Rwy 8, 17L, 26, and 35R	
REIL Rwy 8, 17L, 26, and 35R	
MIRL Rwy 8-26	

CATEGORY	A	B	C	D
S-ILS 35L	5062-1½ 652 (700-1½)			NA
S-LOC 35L	5120-1	710 (800-1)	5120-2 710 (800-2)	NA
CIRCLING	5340-1¼	925 (1000-1¼)	6460-3 2045 (2100-3)	NA



SW-4, 23 MAR 2023 to 20 APR 2023

SW-4, 23 MAR 2023 to 20 APR 2023