

WAAS CH 90214 W29A	APP CRS 288°	Rwy Idg TDZE Apt Elev	7006 3082 3082
--	------------------------	-----------------------------	---

RNAV (GPS) Z RWY 29

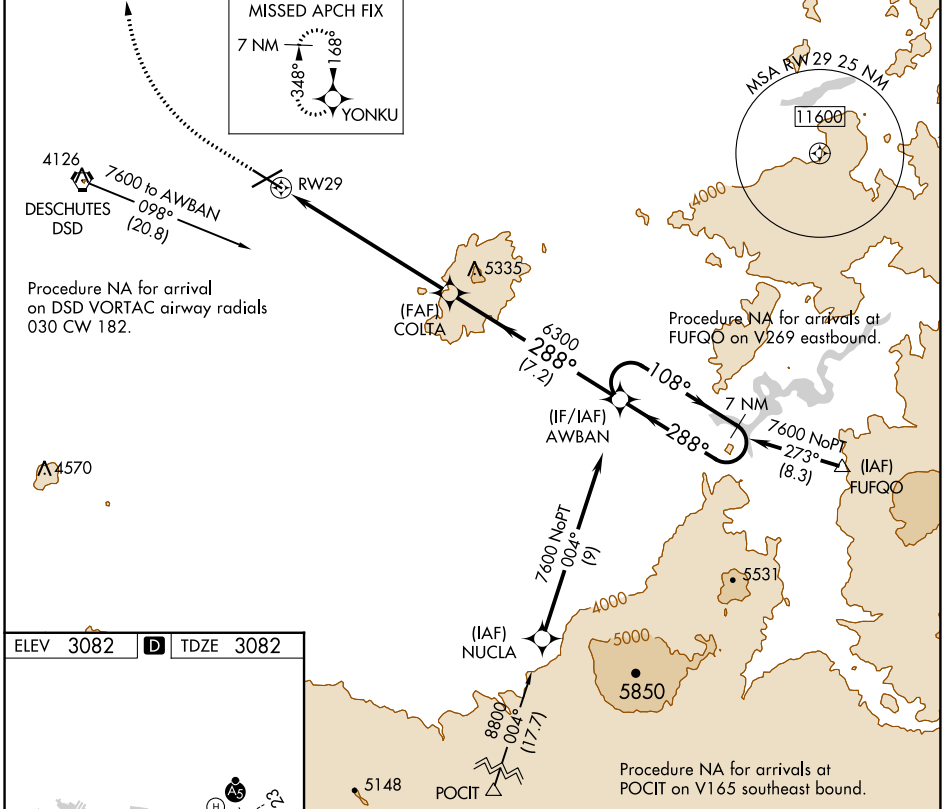
ROBERTS FLD (RDM)

RNP APCH-GPS.

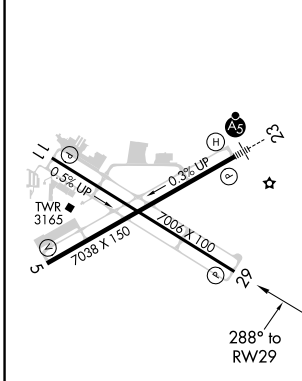
▼ For uncompensated Baro-VNAV systems, LNAV/VNAV NA below -18°C or above 43°C.

▲ MISSED APPROACH: Climb to 4000 then climbing right turn to 7000 direct YONKU and hold, continue climb-in-hold to 7000.

ATIS 119.025	SEATTLE CENTER 126.15 269.475	REDMOND TOWER★ 124.5 (CTAF) 0 256.8	GND CON 121.8	UNICOM 122.95
------------------------	---	---	-------------------------	-------------------------



ELEV 3082	D	TDZE 3082
-----------	----------	-----------



4000	7000	YONKU	VGSI and RNAV glidepath not coincident (VGSI Angle 3.00/TCH 50).	7 NM Holding Pattern
AWBAN	COLTA	6300	288°	108°
RW29	7.1 NM	7.2 NM	288°	7600
GP 4.20°	TCH 43			

CATEGORY	A	B	C	D
LPV DA	3368-1	286 (300-1)		NA
LNAV/VNAV DA	3368-1	286 (300-1)		NA

NW-1, 23 MAR 2023 to 20 APR 2023

NW-1, 23 MAR 2023 to 20 APR 2023