

APP CRS	Rwy Idg	7031
226°	TDZE	3065
	Apt Elev	3080

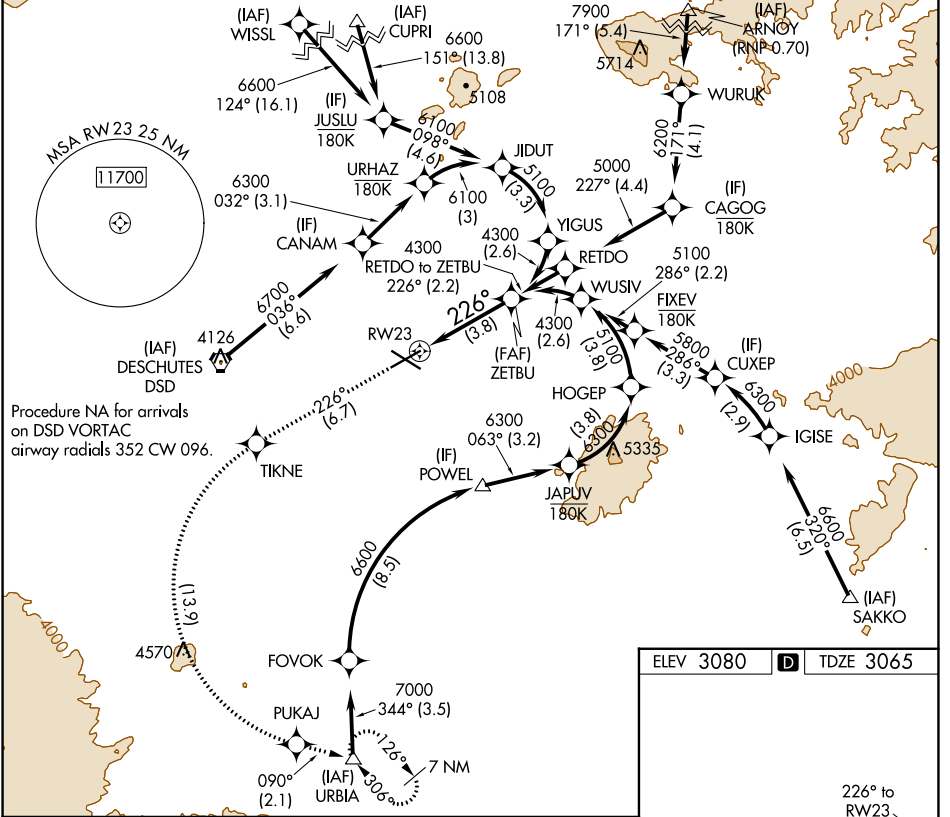
RNAV (RNP) Z RWY 23

ROBERTS FLD (RDM)

▼ For uncompensated Baro-VNAV systems, procedure NA below -20°C (-4°F) or above 53°C (129°F). For inop MALS, increase RNP 0.10 all Cats visibility to ¾ mile. RF required. GPS required.

MALS MISSED APPROACH: Climb to 8500 on track 226° to TIKNE left turn to PUKAJ and on track 090° to URBIA and hold, continue climb-in-hold to 8500.

ATIS 119.025	SEATTLE CENTER 126.15 269.475	REDMOND TOWER* 124.5 (CTAF) 256.8	GND CON 121.8	UNICOM 122.95
------------------------	---	---	-------------------------	-------------------------



8500 ↑ tr 226°	TIKNE	PUKAJ	tr 090°	URBIA	ZETBU
VGSI and RNAV glidepath not coincident (VGSI Angle 3.00/TCH 51).					
See planview for multiple IF locations.					
3.8 NM					
CATEGORY	A	B	C	D	
RNP 0.10 DA	3315-½		250 (300-½)		
RNP 0.30 DA	3552-1¼		487 (500-1¼)		
AUTHORIZATION REQUIRED					

ELEV 3080	D	TDZE 3065
-----------	----------	-----------

REIL Rwy 5, 11, and 29
HIRL Rwy 5-23
MIRL Rwy 11-29

NW-1, 23 MAR 2023 to 20 APR 2023

NW-1, 23 MAR 2023 to 20 APR 2023