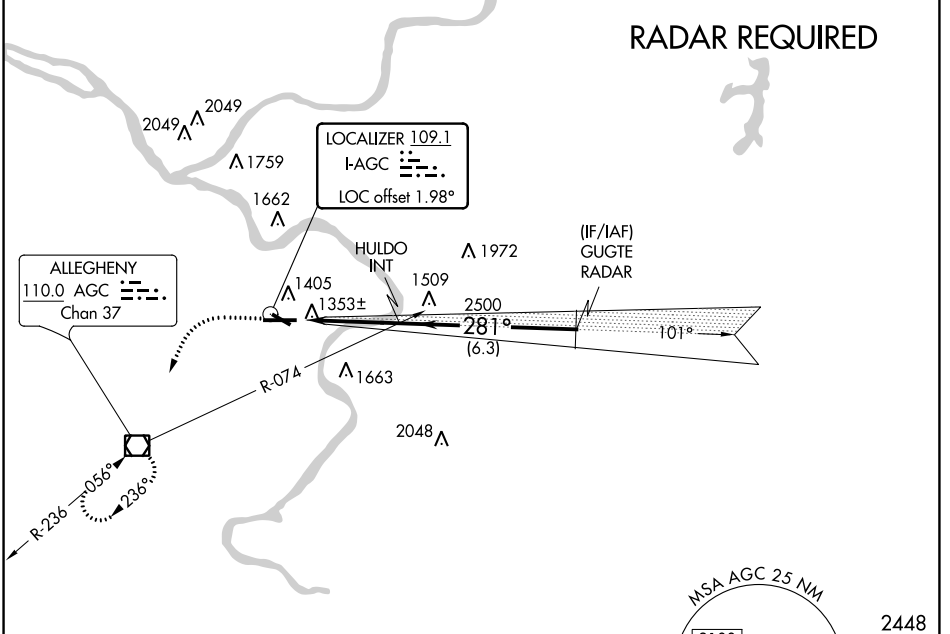


LOC I-AGC 109.1	APP CRS 281°	Rwy ldg TDZE Apt Elev	6501 1251 1252
---------------------------	------------------------	-----------------------------	---

ILS or LOC RWY 28
ALLEGHENY COUNTY (AGC)

For inoperative MALSR, increase S-LOC Cats C and D visibility to RVR 6000. Circling Rwy 13 NA at night.	MALSR	MISSED APPROACH: Climb to 2000 then climbing left turn to 3000 direct AGC VOR/DME and hold, continue climb-in-hold to 3000.	
		ATIS 120.55	PITTSBURGH APP CON 119.35 285.575

ATIS 120.55	PITTSBURGH APP CON 119.35 285.575	ALLEGHENY TOWER 121.1 239.0	GND CON 121.7
-----------------------	---	---------------------------------------	-------------------------

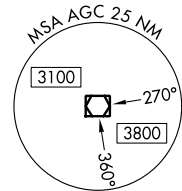
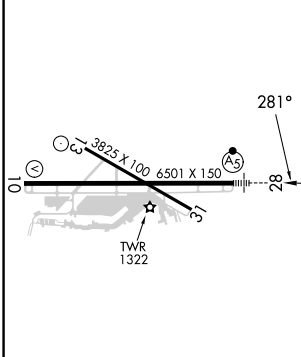


RADAR REQUIRED

NE-4, 23 MAR 2023 to 20 APR 2023

NE-4, 23 MAR 2023 to 20 APR 2023

ELEV 1252	TDZE 1251
-----------	-----------



2448

REIL Rws 10, 13, and 31 HIRL Rws 10-28 and 13-31	CATEGORY A B C D				
FAF to MAP 3.8 NM	S-ILS 28 1501/24 250 (300-1/2)				
	S-LOC 28 1660/24 409 (500-1/2)		1660/40 409 (500-3/4)		
Knots	60	90	120	150	180
Min:Sec	3:48	2:32	1:54	1:31	1:16
CIRCLING	1720-1 468 (500-1)		1980-2 728 (800-2)		1980-2 1/4 728 (800-2 1/4)